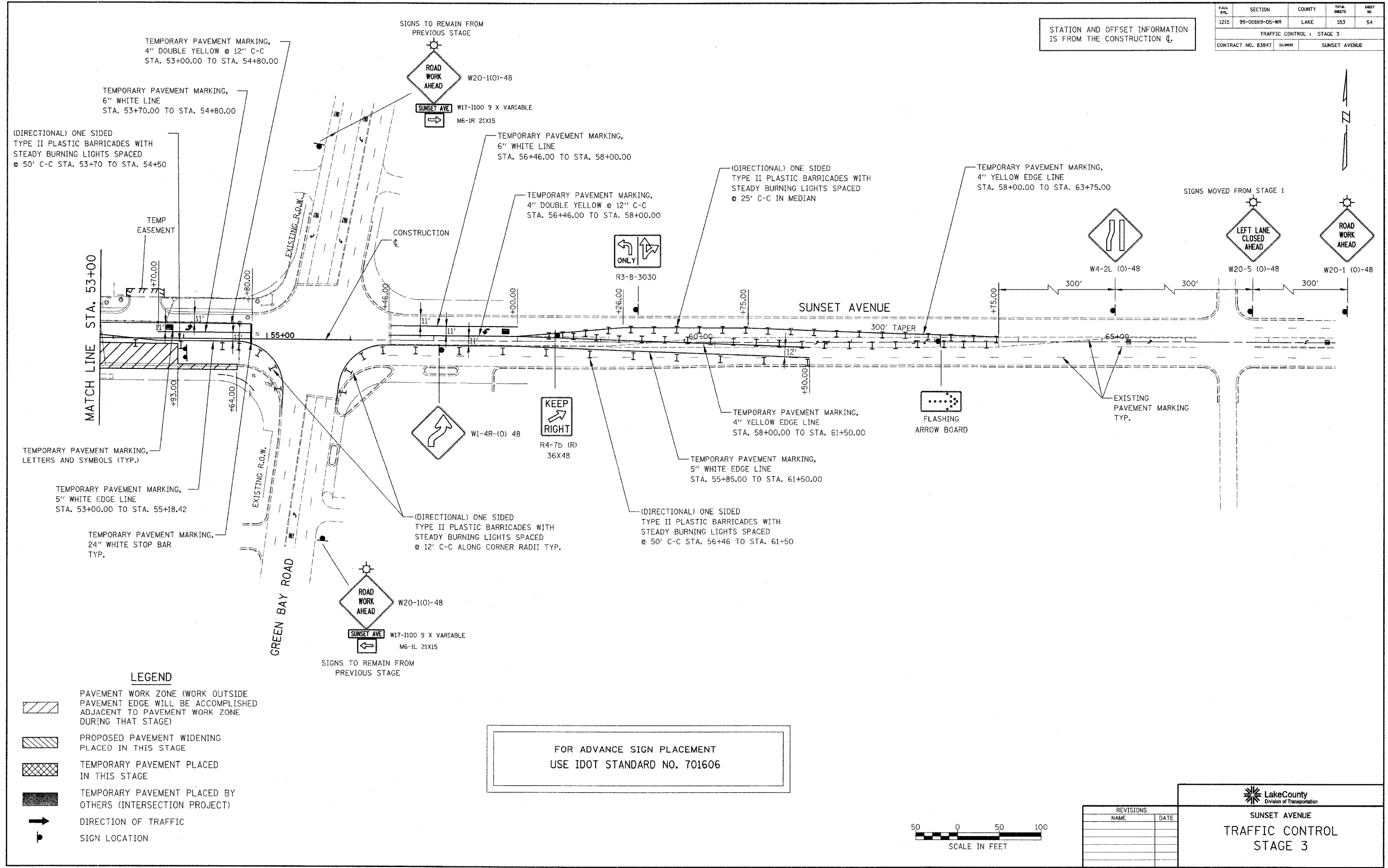


FILE NO.	SECTION	COUNTY	TOTAL SHEETS	SHEET NO.
1215	99-00169-05-WR	LAKE	153	54
TRAFFIC CONTROL - STAGE 3				
CONTRACT NO. 83847		SUNSET AVENUE		

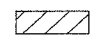
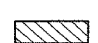




STATION AND OFFSET INFORMATION IS FROM THE CONSTRUCTION CL.

DATE	BY	REVISION

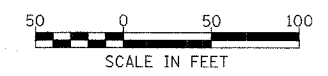
DATE	BY	REVISION




**LEGEND**

-  PAVEMENT WORK ZONE (WORK OUTSIDE PAVEMENT EDGE WILL BE ACCOMPLISHED ADJACENT TO PAVEMENT WORK ZONE DURING THAT STAGE)
-  PROPOSED PAVEMENT WIDENING PLACED IN THIS STAGE
-  TEMPORARY PAVEMENT PLACED IN THIS STAGE
-  TEMPORARY PAVEMENT PLACED BY OTHERS (INTERSECTION PROJECT)
-  DIRECTION OF TRAFFIC
-  SIGN LOCATION

FOR ADVANCE SIGN PLACEMENT  
USE IDOT STANDARD NO. 701606



REVISIONS	
NAME	DATE

  
**SUNSET AVENUE**  
**TRAFFIC CONTROL**  
**STAGE 3**