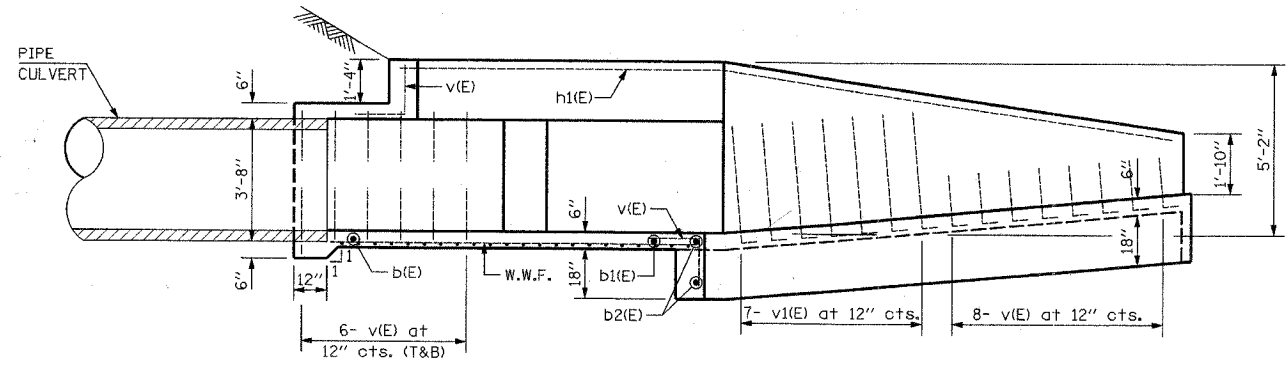
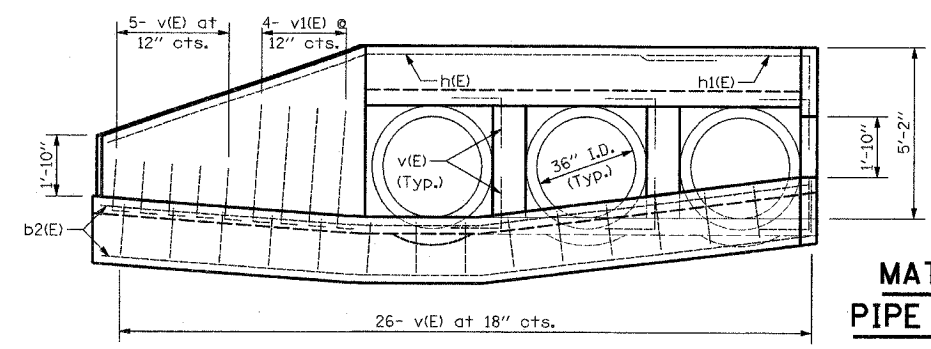


| FILE NO. | SECTION | COUNTY | TOTAL SHEETS | SHEET NO. |
|----------------------------------|----------------|------------------------|--------------|-----------|
| 1215 | 99-00169-05-WR | LAKE | 153 | 66 |
| PIPE CULVERT END SECTION DETAILS | | | | |
| CONTRACT NO. 83847 | | ILLINOIS SUNSET AVENUE | | |



SECTION A-A



END VIEW

MATERIAL REQUIRED FOR PIPE CULVERT END SECTION

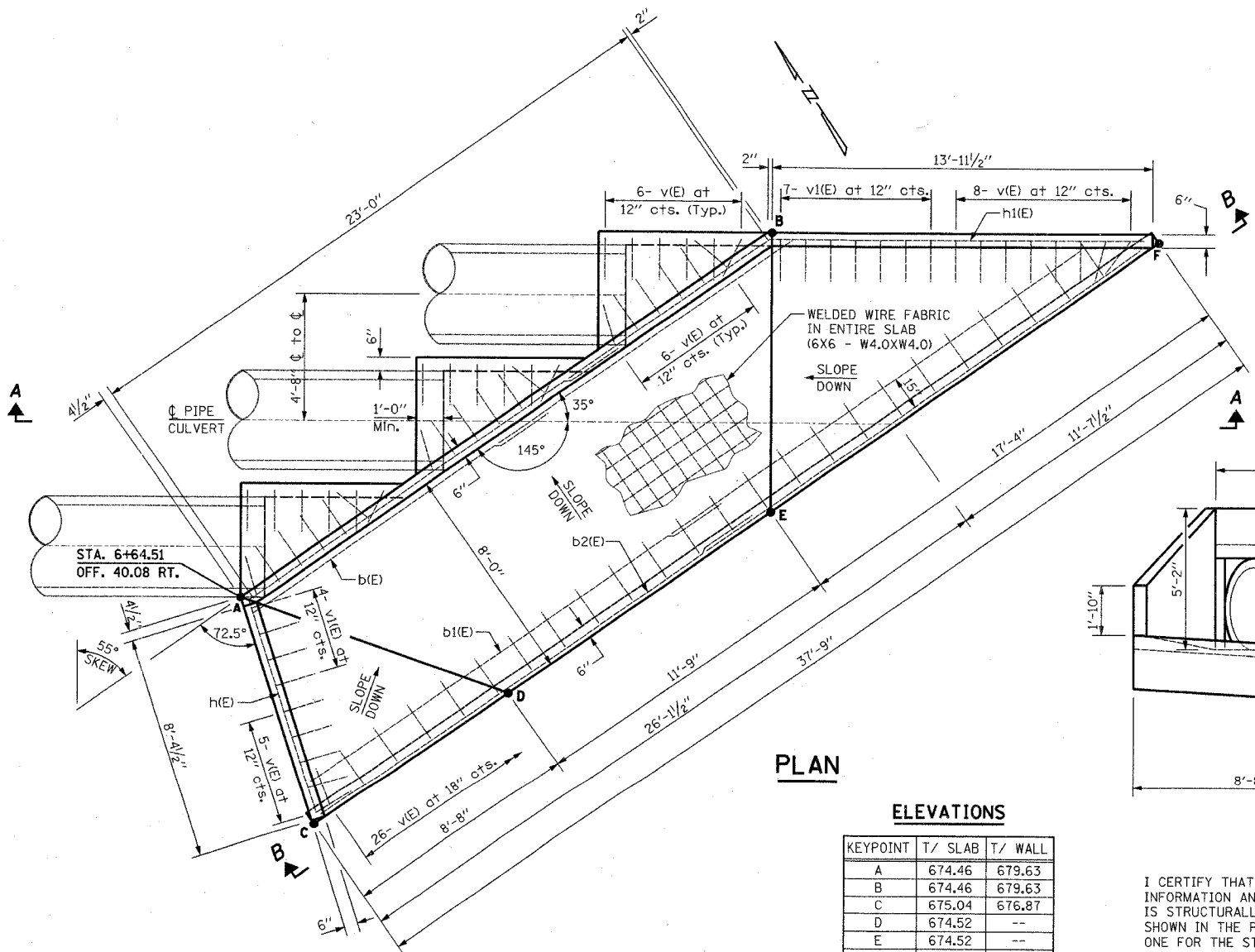
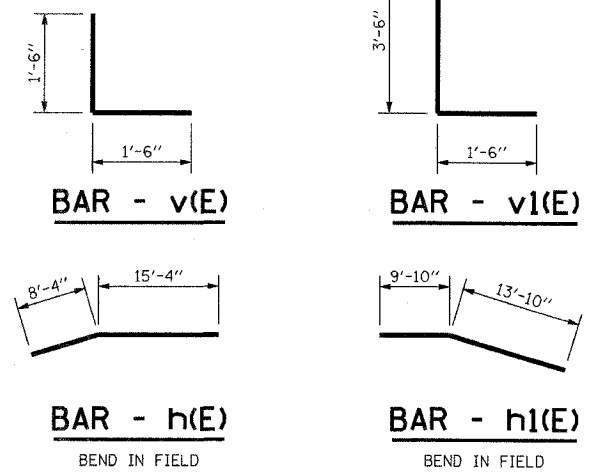
| BAR | NO. | SIZE | LENGTH | SHAPE | |
|----------------------------------|-----|------|---------|-------|-----|
| b(E) | 2 | #4 | 12'-6" | — | |
| b1(E) | 2 | #4 | 18'-10" | — | |
| b2(E) | 4 | #4 | 19'-8" | — | |
| h(E) | 1 | #4 | 23'-8" | — | |
| h1(E) | 1 | #4 | 23'-8" | — | |
| v(E) | 93 | #4 | 3'-0" | — | |
| v1(E) | 11 | #4 | 5'-0" | — | |
| REINFORCEMENT BARS, EPOXY COATED | | | | POUND | 350 |
| WELDED WIRE FABRIC SQ. FT. | | | | | 365 |
| CONCRETE STRUCTURES CU. YD. | | | | | 13 |
| STRUCTURE EXCAVATION CU. YD. | | | | | 60 |

QUANTITIES SHOWN ARE FOR INFORMATION ONLY. COST IS INCLUDED WITH "CAST-IN-PLACE REINFORCED CONCRETE END SECTIONS".

BILL OF MATERIAL

| DESCRIPTION | UNITS | QTY. |
|--|-------|------|
| CAST-IN-PLACE REINFORCED CONCRETE END SECTIONS | EACH | 1 |

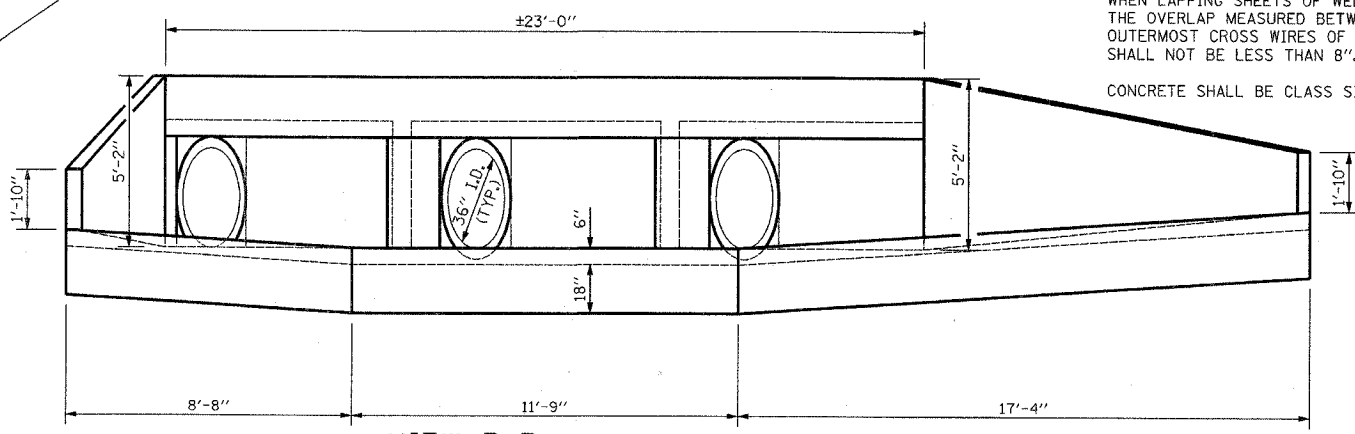
NOTES:
 STRUCTURE NUMBER HAS BEEN ASSIGNED: 049-3000
 REINFORCEMENT BARS DESIGNATED (E) SHALL BE EPOXY COATED.
 WHEN LAPPING SHEETS OF WELDED WIRE FABRIC, THE OVERLAP MEASURED BETWEEN THE OUTERMOST CROSS WIRES OF EACH FABRIC SHEET SHALL NOT BE LESS THAN 8".
 CONCRETE SHALL BE CLASS SI.



PLAN

ELEVATIONS

| KEYPOINT | T/ SLAB | T/ WALL |
|----------|---------|---------|
| A | 674.46 | 679.63 |
| B | 674.46 | 679.63 |
| C | 675.04 | 676.87 |
| D | 674.52 | -- |
| E | 674.52 | -- |
| F | 675.68 | 677.51 |



VIEW B-B
(REINF. OMITTED FOR CLARITY)

I CERTIFY THAT TO THE BEST OF MY KNOWLEDGE, INFORMATION AND BELIEF, THIS BOX CULVERT DESIGN IS STRUCTURALLY ADEQUATE FOR THE DESIGN LOADING SHOWN IN THE PLANS. THE DESIGN IS AN ECONOMICAL ONE FOR THE STYLE OF STRUCTURE AND COMPLIES WITH REQUIREMENTS OF THE CURRENT 'AASHTO STANDARD SPECIFICATIONS FOR HIGHWAY BRIDGES'."



William P. Murphy 11/10/07
 EXP. 11/30/08 SHEETS 66-69

| REVISIONS | |
|-----------|------|
| NAME | DATE |
| | |
| | |



**SUNSET AVENUE
 PIPE CULVERT
 END SECTION
 DETAILS**

PROFILE SCALE HORIZ. 1:50
 VERT. 1:5

DATE: _____
 BY: _____
 CHECKED: _____
 DATE: _____
 BY: _____
 CHECKED: _____
 DATE: _____
 BY: _____
 CHECKED: _____

DATE: _____
 BY: _____
 CHECKED: _____
 DATE: _____
 BY: _____
 CHECKED: _____
 DATE: _____
 BY: _____
 CHECKED: _____