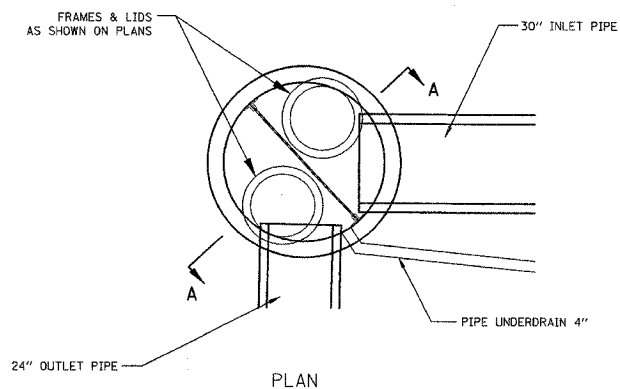
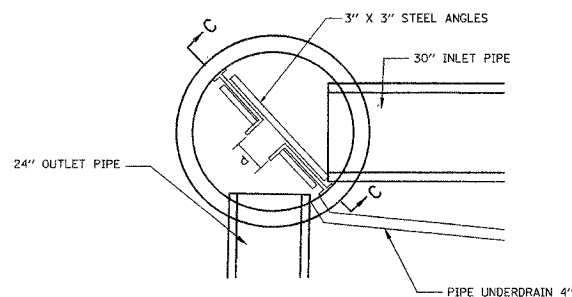


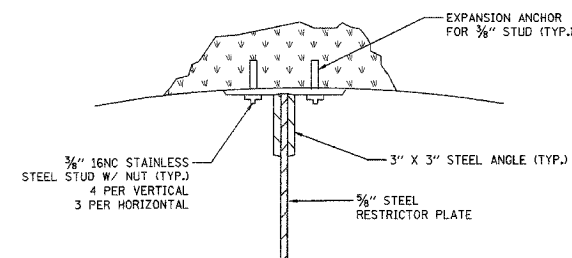
FILE NO.	SECTION	COUNTY	TOTAL SHEETS	SHEET NO.
1215	99-00169-05-WR	LAKE	153	70
CONSTRUCTION DETAIL				
CONTRACT NO. 83847		ILLINOIS	SUNSET AVENUE	



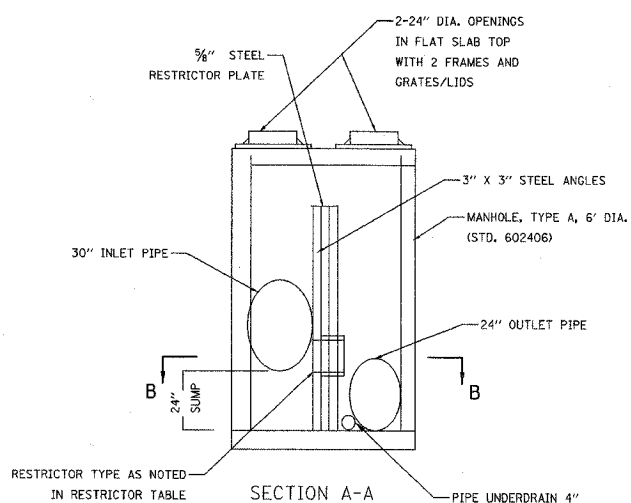
PLAN



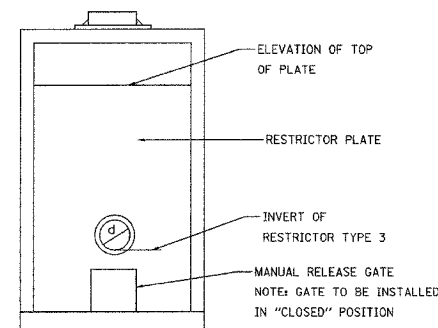
SECTION B-B
FLOOR PLAN



ANGLE FASTENER DETAIL

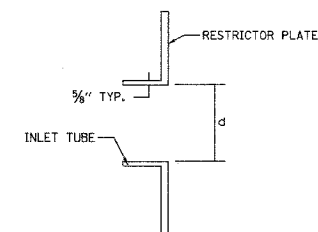


SECTION A-A



SECTION C-C

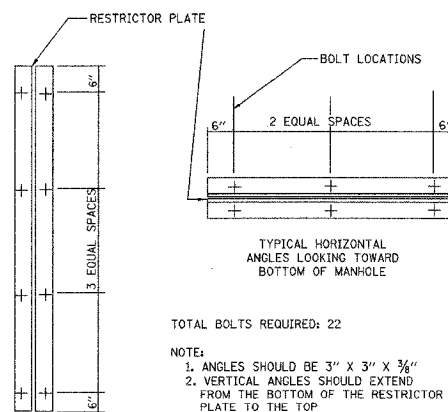
- NOTES:
1. ALL STEEL ANGLES AND PLATES TO BE GALVANIZED AFTER FABRICATION
 2. ALL RESTRICTOR PLATES, ANGLES AND HARDWARE TO BE INCLUDED IN THE COST OF THE MANHOLE.
 3. BASIS OF PAYMENT: "MANHOLES, TYPE A, 6" - DIAMETER, TYPE I FRAME, CLOSED LID, RESTRICTOR PLATE" EACH



INLET TUBE DETAIL

STATION	MANHOLE DIAMETER	FRAME AND GRATE	RESTRICTOR TYPE	INSIDE RESTRICTOR TYPE DIAMETER MM (IN.) (d)	INVERT OF RESTRICTOR	ELEVATION OF TOP OF PLATE OVERFLOW
29+63.00	6'	TYPE 1/C	3	9.0"	695.86	700.25

RESTRICTOR PLATE DATA



TYPICAL VERTICAL ANGLES LOOKING TOWARD MANHOLE WALL

STEEL ANGLE BOLTING DETAILS

1	2	3	4	5	6
RE-ENTRANT TUBE	SHARP EDGES	SQUARE EDGED	RE-ENTRANT TUBE	SQUARE EDGED	ROUNDED
LENGTH TO 1 DIA. C=.52	C=.61	STREAM CLEARS SIDES C=.61	LENGTH 2-1/2 DIA. C=.73	LENGTH 2-1/2 DIA. C=.82	C=.98

VALUES OF "C" FOR CIRCULAR AND SQUARE ORIFICES

6' DIAMETER MANHOLE WITH RESTRICTOR PLATE DETAIL

REVISIONS	
NAME	DATE



SUNSET AVENUE
CONSTRUCTION DETAIL