

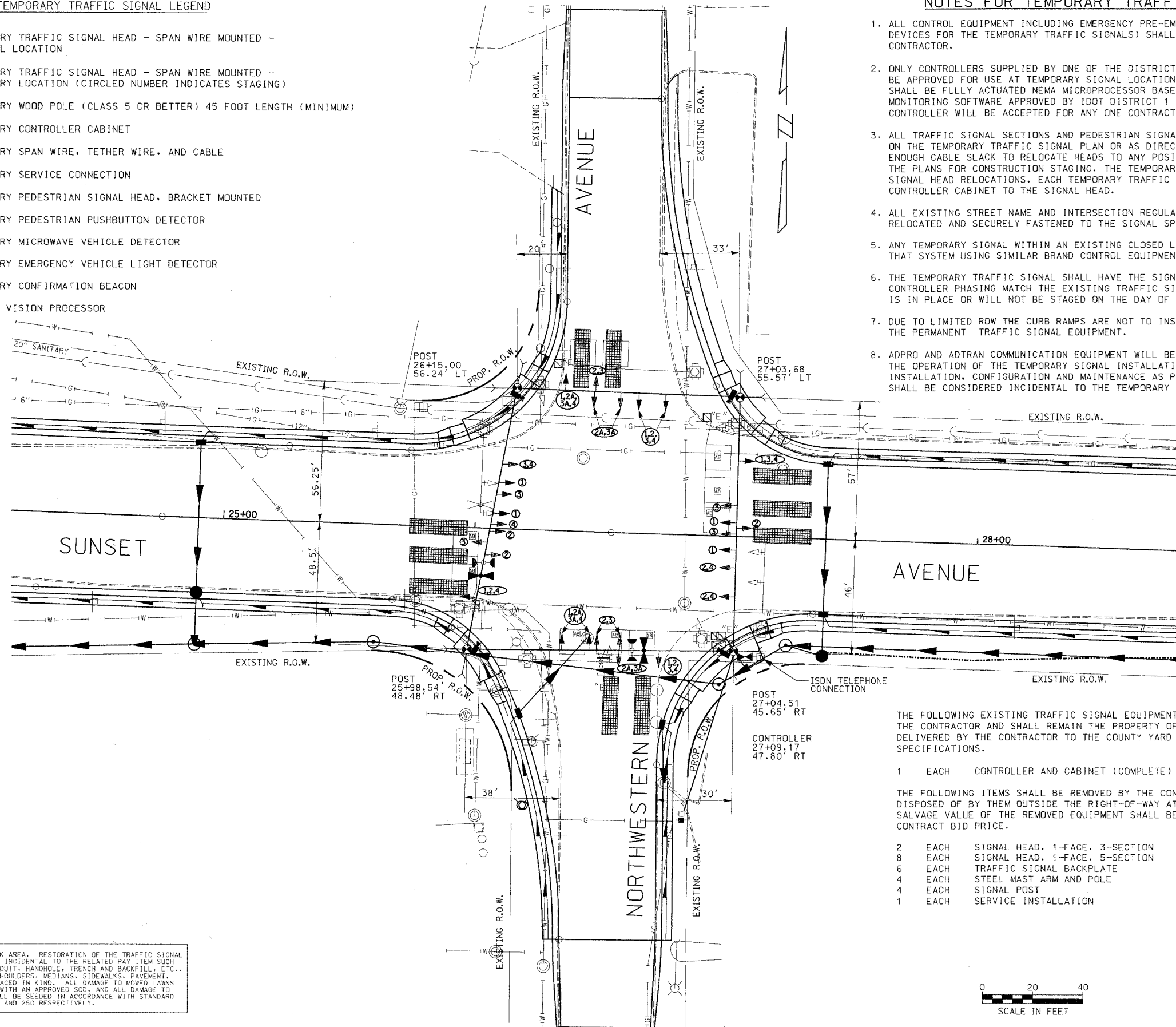
TEMPORARY TRAFFIC SIGNAL LEGEND

- ▲ TEMPORARY TRAFFIC SIGNAL HEAD - SPAN WIRE MOUNTED - ORIGINAL LOCATION
- ②▲ TEMPORARY TRAFFIC SIGNAL HEAD - SPAN WIRE MOUNTED - SECONDARY LOCATION (CIRCLED NUMBER INDICATES STAGING)
- ⊙ TEMPORARY WOOD POLE (CLASS 5 OR BETTER) 45 FOOT LENGTH (MINIMUM)
- ☒ TEMPORARY CONTROLLER CABINET
- TEMPORARY SPAN WIRE, TETHER WIRE, AND CABLE
- ⊕ TEMPORARY SERVICE CONNECTION
- TEMPORARY PEDESTRIAN SIGNAL HEAD, BRACKET MOUNTED
- ⊙ TEMPORARY PEDESTRIAN PUSHBUTTON DETECTOR
- ▼ TEMPORARY MICROWAVE VEHICLE DETECTOR
- ☒ TEMPORARY EMERGENCY VEHICLE LIGHT DETECTOR
- ⊙ TEMPORARY CONFIRMATION BEACON
- MACHINE VISION PROCESSOR

NOTES FOR TEMPORARY TRAFFIC SIGNALS

CALL AVE.	SECTION	COUNTY	TOTAL SHEETS	SHEET NO.
1215	99-00169-05-WR	LAKE	153	71
TRAFFIC SIGNAL PLAN				
CONTRACT NO. 83847		ILLINOIS	SUNSET AVENUE	

1. ALL CONTROL EQUIPMENT INCLUDING EMERGENCY PRE-EMPTION AND COMMUNICATION DEVICES FOR THE TEMPORARY TRAFFIC SIGNALS) SHALL BE FURNISHED BY THE CONTRACTOR.
2. ONLY CONTROLLERS SUPPLIED BY ONE OF THE DISTRICT APPROVED CLOSED LOOP EQUIPMENT MANUFACTURERS WILL BE APPROVED FOR USE AT TEMPORARY SIGNAL LOCATIONS. ALL CONTROLLERS USED FOR TEMPORARY TRAFFIC SIGNALS SHALL BE FULLY ACTUATED NEMA MICROPROCESSOR BASED WITH RS232 DATA ENTRY PORTS COMPATIBLE WITH EXISTING MONITORING SOFTWARE APPROVED BY IDOT DISTRICT 1 INSTALLED IN A NEMA TSI OR TS2 CABINET. ONLY ONE BRAND OF CONTROLLER WILL BE ACCEPTED FOR ANY ONE CONTRACT.
3. ALL TRAFFIC SIGNAL SECTIONS AND PEDESTRIAN SIGNAL SECTIONS SHALL BE 12" HEADS SHALL BE PLACED AS INDICATED ON THE TEMPORARY TRAFFIC SIGNAL PLAN OR AS DIRECTED BY THE ENGINEER. THE CONTRACTOR SHALL FURNISH ENOUGH CABLE SLACK TO RELOCATE HEADS TO ANY POSITION ON THE SPAN WIRE OR AT LOCATIONS ILLUSTRATED ON THE PLANS FOR CONSTRUCTION STAGING. THE TEMPORARY TRAFFIC SIGNAL SHALL REMAIN IN OPERATION DURING ALL SIGNAL HEAD RELOCATIONS. EACH TEMPORARY TRAFFIC SIGNAL HEAD SHALL HAVE ITS OWN CABLE FROM THE CONTROLLER CABINET TO THE SIGNAL HEAD.
4. ALL EXISTING STREET NAME AND INTERSECTION REGULATORY SIGNS SHALL BE REMOVED FROM EXISTING POLES. RELOCATED AND SECURELY FASTENED TO THE SIGNAL SPAN WIRE OR WOOD POLE AS DIRECTED BY THE ENGINEER.
5. ANY TEMPORARY SIGNAL WITHIN AN EXISTING CLOSED LOOP TRAFFIC SIGNAL SYSTEM SHALL BE INTERCONNECTED TO THAT SYSTEM USING SIMILAR BRAND CONTROL EQUIPMENT.
6. THE TEMPORARY TRAFFIC SIGNAL SHALL HAVE THE SIGNAL HEAD DISPLAYS. SIGNAL HEAD PLACEMENTS AND CONTROLLER PHASING MATCH THE EXISTING TRAFFIC SIGNAL. AT THE TIME OF THE TURN ON, IF NO TRAFFIC STAGING IS IN PLACE OR WILL NOT BE STAGED ON THE DAY OF THE TURN ON.
7. DUE TO LIMITED ROW THE CURB RAMP ARE NOT TO INSTALLED PRIOR TO INSTALLATION AND ACTIVATION OF THE PERMANENT TRAFFIC SIGNAL EQUIPMENT.
8. ADPRO AND ADTRAN COMMUNICATION EQUIPMENT WILL BE PROVIDED BY LCDOT TO BE UTILIZED THROUGHOUT THE OPERATION OF THE TEMPORARY SIGNAL INSTALLATION. THE CONTRACTOR IS RESPONSIBLE FOR THE INSTALLATION, CONFIGURATION AND MAINTENANCE AS PART OF THE TEMPORARY SIGNAL INSTALLATION, AND SHALL BE CONSIDERED INCIDENTAL TO THE TEMPORARY TRAFFIC SIGNAL INSTALL.



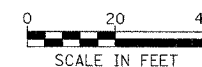
THE FOLLOWING EXISTING TRAFFIC SIGNAL EQUIPMENT SHALL BE REMOVED BY THE CONTRACTOR AND SHALL REMAIN THE PROPERTY OF THE LCDOT AND SHALL BE DELIVERED BY THE CONTRACTOR TO THE COUNTY YARD PER THE TRAFFIC SIGNAL SPECIFICATIONS.

- 1 EACH CONTROLLER AND CABINET (COMPLETE)

THE FOLLOWING ITEMS SHALL BE REMOVED BY THE CONTRACTOR AND SHALL BE DISPOSED OF BY THEM OUTSIDE THE RIGHT-OF-WAY AT THEIR EXPENSE. THE SALVAGE VALUE OF THE REMOVED EQUIPMENT SHALL BE REFLECTED IN THE CONTRACT BID PRICE.

- 2 EACH SIGNAL HEAD, 1-FACE, 3-SECTION
- 8 EACH SIGNAL HEAD, 1-FACE, 5-SECTION
- 6 EACH TRAFFIC SIGNAL BACKPLATE
- 4 EACH STEEL MAST ARM AND POLE
- 4 EACH SIGNAL POST
- 1 EACH SERVICE INSTALLATION

RESTORATION OF WORK AREA. RESTORATION OF THE TRAFFIC SIGNAL WORK AREA SHALL BE INCIDENTAL TO THE RELATED PAY ITEM SUCH AS FOUNDATION, CONDUIT, HANDHOLE, TRENCH AND BACKFILL, ETC.. SURFACES SUCH AS SHOULDERS, MEDIANS, SIDEWALKS, PAVEMENT, ETC. SHALL BE REPLACED IN KIND. ALL DAMAGE TO MOWED LAWNS SHALL BE REPLACED WITH AN APPROVED SOD, AND ALL DAMAGE TO UNKNOWN FIELDS SHALL BE SEEDED IN ACCORDANCE WITH STANDARD SPECIFICATIONS 252 AND 250 RESPECTIVELY.



REVISIONS	
NAME	DATE

**TEMPORARY TRAFFIC SIGNAL
INSTALLATION AND REMOVE EXISTING
TRAFFIC SIGNAL EQUIPMENT**
 SUNSET AVENUE AND NORTHWESTERN AVENUE