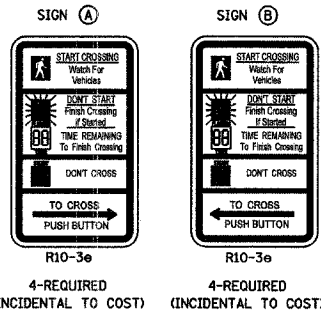


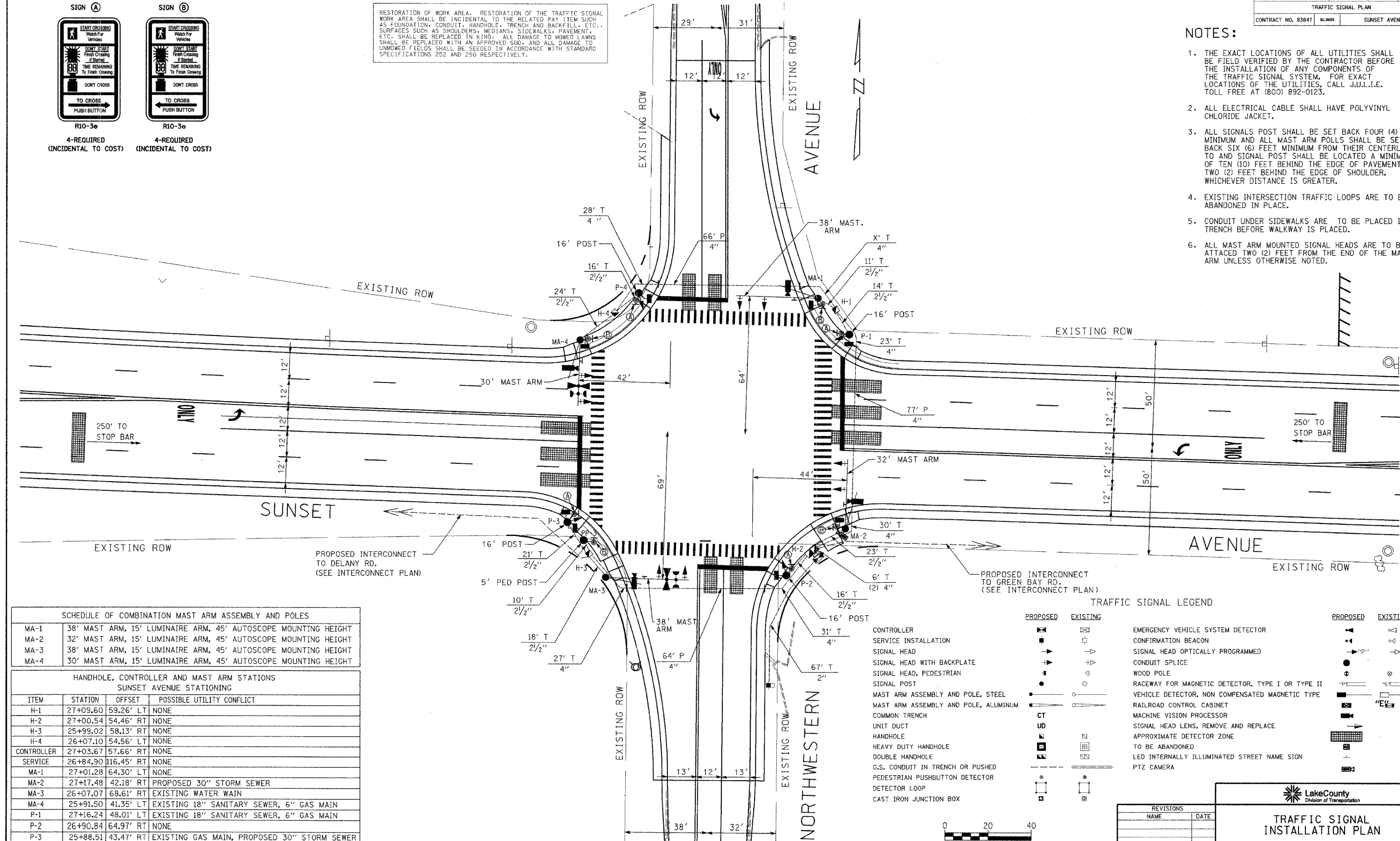
FILE #	SECTION	COUNTY	TOTAL SHEETS	SHEET NO
1215	99-00169-05-WR	LAKE	153	73
TRAFFIC SIGNAL PLAN				
CONTRACT NO. 83847		ILLINOIS	SUNSET AVENUE	



RESTORATION OF WORK AREA. RESTORATION OF THE TRAFFIC SIGNAL WORK AREA SHALL BE INCIDENTAL TO THE RELATED PAY ITEM SUCH AS FOUNDATION, CONDUIT, HANDHOLE, TRENCH AND BACKFILL, ETC... SURFACES SUCH AS SHOULDERS, MEDIANS, SIDEWALKS, PAVEMENT, ETC. SHALL BE REPLACED IN KIND. ALL DAMAGE TO MOWED LAWNS SHALL BE REPLACED WITH AN APPROVED SOG. AND ALL DAMAGE TO UNMOWED FIELDS SHALL BE SEEDED IN ACCORDANCE WITH STANDARD SPECIFICATIONS 252 AND 250 RESPECTIVELY.

NOTES:

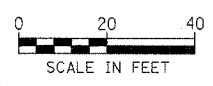
1. THE EXACT LOCATIONS OF ALL UTILITIES SHALL BE FIELD VERIFIED BY THE CONTRACTOR BEFORE THE INSTALLATION OF ANY COMPONENTS OF THE TRAFFIC SIGNAL SYSTEM. FOR EXACT LOCATIONS OF THE UTILITIES, CALL J.U.L.I.E. TOLL FREE AT (800) 892-0123.
2. ALL ELECTRICAL CABLE SHALL HAVE POLYVINYL CHLORIDE JACKET.
3. ALL SIGNALS POST SHALL BE SET BACK FOUR (4) FEET MINIMUM AND ALL MAST ARM POLLS SHALL BE SET BACK SIX (6) FEET MINIMUM FROM THEIR CENTERLINE TO AND SIGNAL POST SHALL BE LOCATED A MINIMUM OF TEN (10) FEET BEHIND THE EDGE OF PAVEMENT OR TWO (2) FEET BEHIND THE EDGE OF SHOULDER, WHICHEVER DISTANCE IS GREATER.
4. EXISTING INTERSECTION TRAFFIC LOOPS ARE TO BE ABANDONED IN PLACE.
5. CONDUIT UNDER SIDEWALKS ARE TO BE PLACED IN TRENCH BEFORE WALKWAY IS PLACED.
6. ALL MAST ARM MOUNTED SIGNAL HEADS ARE TO BE ATTACHED TWO (2) FEET FROM THE END OF THE MAST ARM UNLESS OTHERWISE NOTED.



SCHEDULE OF COMBINATION MAST ARM ASSEMBLY AND POLES			
MA-1	38' MAST ARM, 15' LUMINAIRE ARM, 45' AUTOSCOPE MOUNTING HEIGHT		
MA-2	32' MAST ARM, 15' LUMINAIRE ARM, 45' AUTOSCOPE MOUNTING HEIGHT		
MA-3	38' MAST ARM, 15' LUMINAIRE ARM, 45' AUTOSCOPE MOUNTING HEIGHT		
MA-4	30' MAST ARM, 15' LUMINAIRE ARM, 45' AUTOSCOPE MOUNTING HEIGHT		

HANDHOLE, CONTROLLER AND MAST ARM STATIONS SUNSET AVENUE STATIONING			
ITEM	STATION	OFFSET	POSSIBLE UTILITY CONFLICT
H-1	27+09.60	59.26' LT	NONE
H-2	27+00.54	54.46' RT	NONE
H-3	25+99.02	58.13' RT	NONE
H-4	26+07.10	54.56' LT	NONE
CONTROLLER	27+03.67	57.66' RT	NONE
SERVICE	26+84.90	116.45' RT	NONE
MA-1	27+01.28	64.30' LT	NONE
MA-2	27+17.48	42.18' RT	PROPOSED 30" STORM SEWER
MA-3	26+07.07	68.61' RT	EXISTING WATER MAIN
MA-4	25+91.50	41.35' LT	EXISTING 18" SANITARY SEWER, 6" GAS MAIN
P-1	27+16.24	48.01' LT	EXISTING 18" SANITARY SEWER, 6" GAS MAIN
P-2	26+90.84	64.97' RT	NONE
P-3	25+88.51	43.47' RT	EXISTING GAS MAIN, PROPOSED 30" STORM SEWER
P-4	26+17.92	63.93' LT	EXISTING 4" GAS MAIN
PP-3	25+96.30	51.51' RT	PROPOSED 30" STORM SEWER

TRAFFIC SIGNAL LEGEND			
	PROPOSED	EXISTING	
CONTROLLER	[Symbol]	[Symbol]	EMERGENCY VEHICLE SYSTEM DETECTOR
SERVICE INSTALLATION	[Symbol]	[Symbol]	CONFIRMATION BEACON
SIGNAL HEAD	[Symbol]	[Symbol]	SIGNAL HEAD OPTICALLY PROGRAMMED
SIGNAL HEAD WITH BACKPLATE	[Symbol]	[Symbol]	CONDUIT SPLICE
SIGNAL HEAD, PEDESTRIAN	[Symbol]	[Symbol]	WOOD POLE
SIGNAL POST	[Symbol]	[Symbol]	RAVEWAY FOR MAGNETIC DETECTOR, TYPE I OR TYPE II
MAST ARM ASSEMBLY AND POLE, STEEL	[Symbol]	[Symbol]	VEHICLE DETECTOR, NON COMPENSATED MAGNETIC TYPE
MAST ARM ASSEMBLY AND POLE, ALUMINUM	[Symbol]	[Symbol]	RAILROAD CONTROL CABINET
COMMON TRENCH	[Symbol]	[Symbol]	MACHINE VISION PROCESSOR
UNIT DUCT	[Symbol]	[Symbol]	SIGNAL HEAD LENS, REMOVE AND REPLACE
HANDHOLE	[Symbol]	[Symbol]	APPROXIMATE DETECTOR ZONE
HEAVY DUTY HANDHOLE	[Symbol]	[Symbol]	TO BE ABANDONED
DOUBLE HANDHOLE	[Symbol]	[Symbol]	LED INTERNALLY ILLUMINATED STREET NAME SIGN
G.S. CONDUIT IN TRENCH OR PUSHED	[Symbol]	[Symbol]	PTZ CAMERA
PEDESTRIAN PUSHBUTTON DETECTOR	[Symbol]	[Symbol]	
DETECTOR LOOP	[Symbol]	[Symbol]	
CAST IRON JUNCTION BOX	[Symbol]	[Symbol]	



REVISIONS	
NAME	DATE

**TRAFFIC SIGNAL
INSTALLATION PLAN**
 SUNSET AVENUE AND NORTHWESTERN AVENUE
 1" = 20'