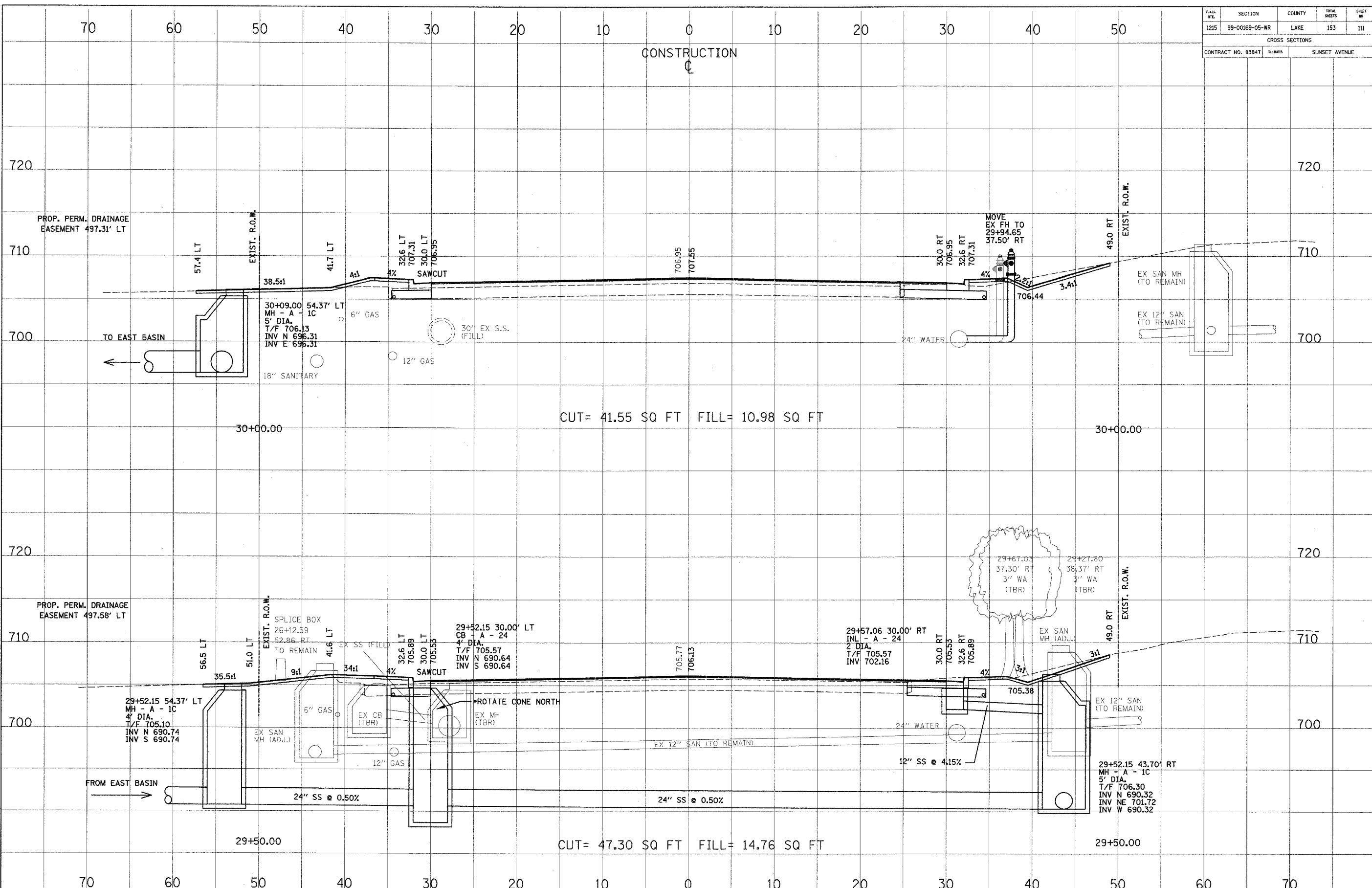


FILE #	SECTION	COUNTY	TOTAL SHEETS	SHEET NO
1215	99-00169-05-WR	LAKE	153	111
CROSS SECTIONS				
CONTRACT NO. 83847		ILLINOIS	SUNSET AVENUE	



CROSS SECTION SURVEYED, CHECKED, ALIGNED, CHECKED, NOTE BOOK NO., DATE, BY

CROSS SECTION SURVEYED, CHECKED, GRADES CHECKED, STRUCTURE NOTATIONS OK'D, NOTE BOOK NO., DATE, BY