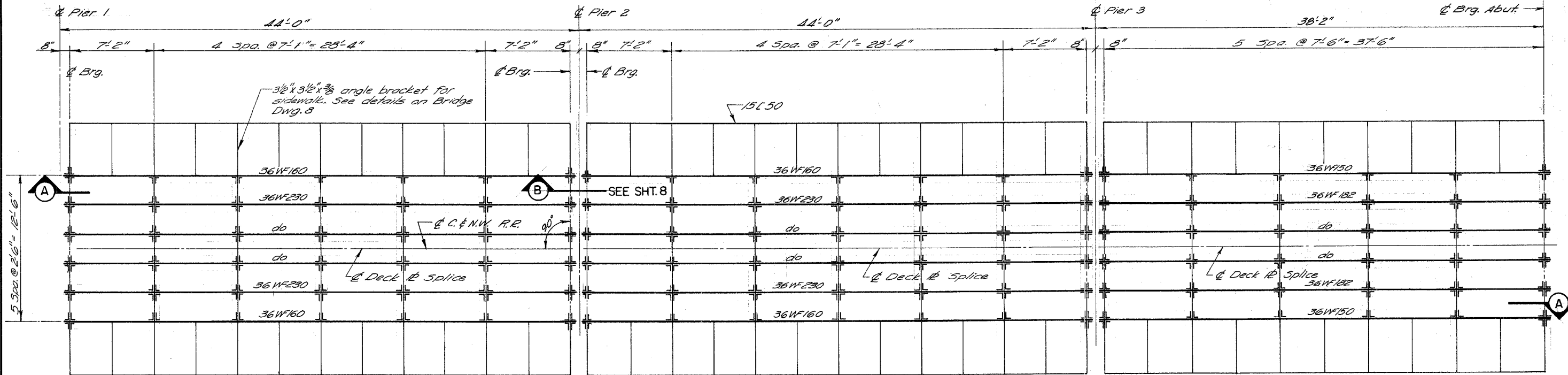
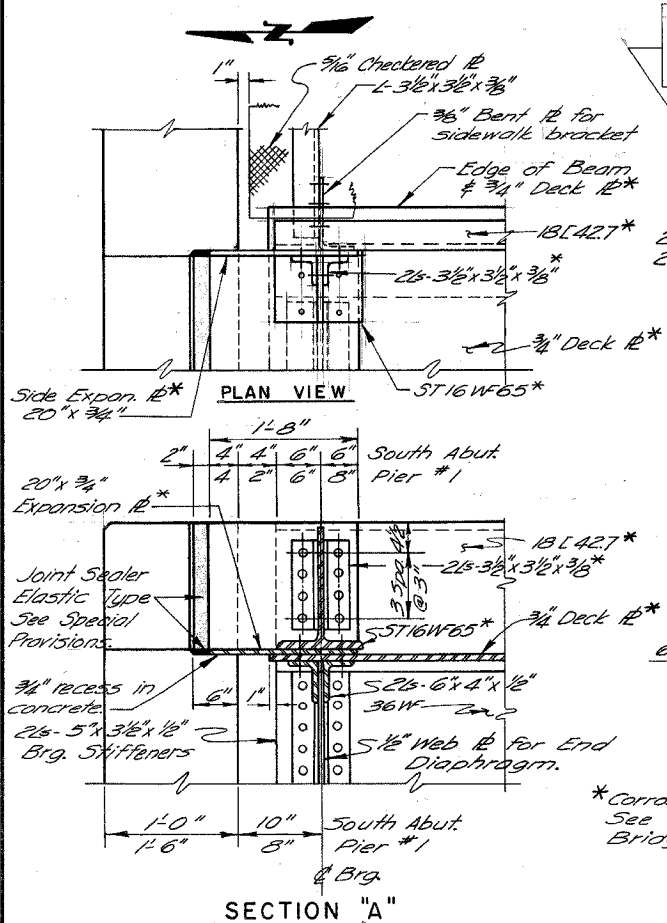


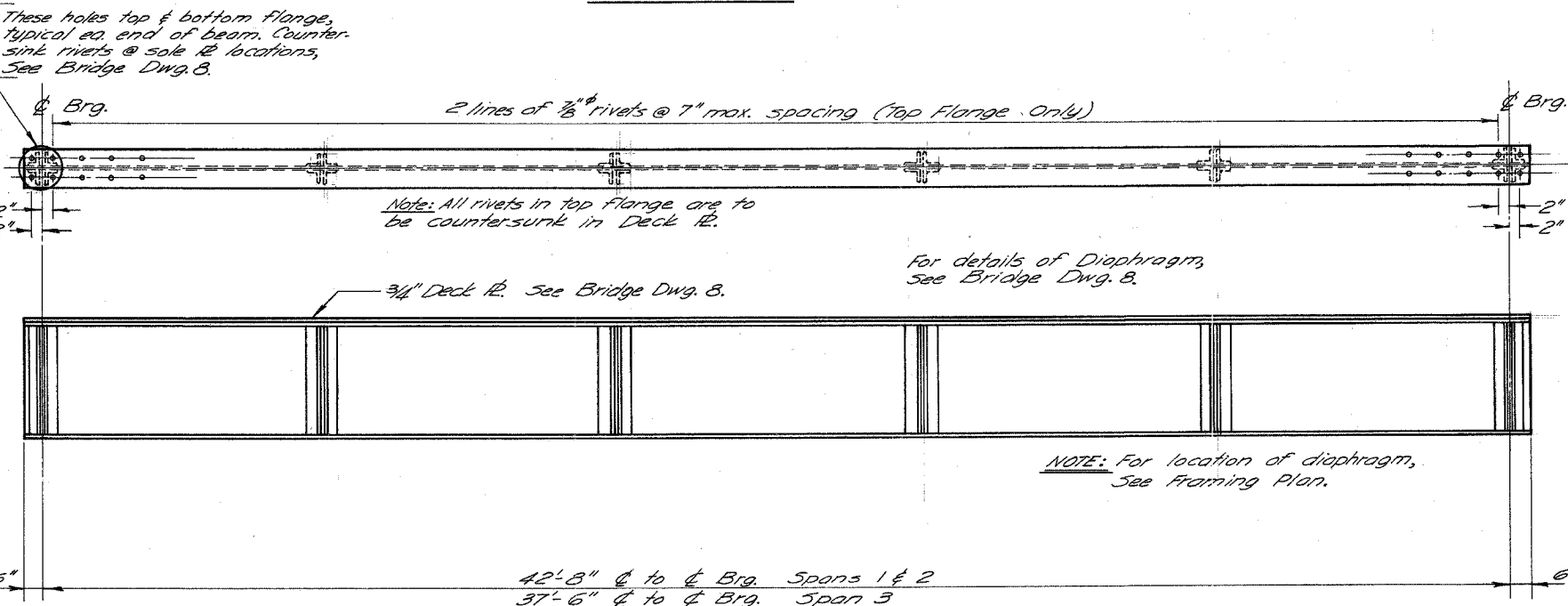
FAU Route 1215	Section Number 99-00169-05-WR	County Lake	Total Sheets 156	Sheet Number 154
Contract Number: 83847		Illinois	Sunset Ave.	



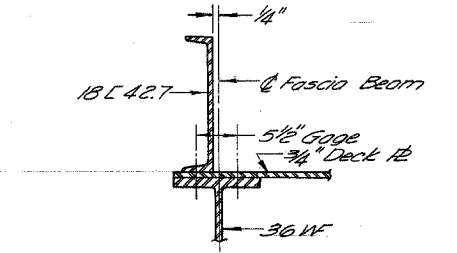
FRAMING PLAN



SECTION "A"



TYPICAL BEAM DETAIL



TYPICAL FASCIA BEAM SECTION

*Corrosion resistant steel. See General Notes on Bridge Dwg. 4.

NOTE: For location of diaphragm, See Framing Plan.

STEEL FRAMING PLAN

CHICAGO & NORTHWESTERN RAILROAD BRIDGE
OVER COUNTY HIGHWAY 46
LAKE COUNTY
ILLINOIS

DESIGNED BY: DATE: 5-85
DRAWN BY: DATE: 5-85
CHECKED BY: DATE: 5-85
IN CHARGE: DATE: 5-85