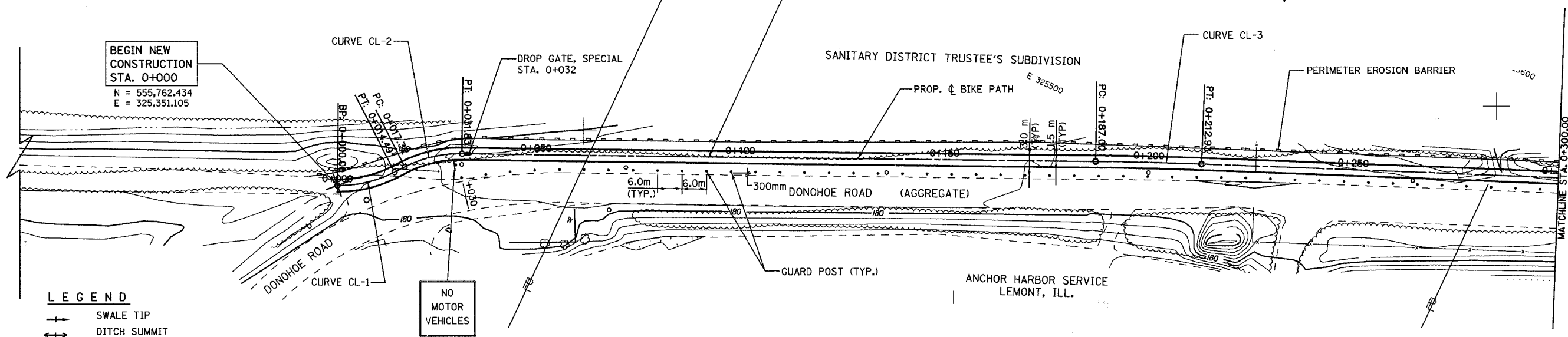


SECTION	COUNTY	TOTAL SHEETS	SHEET NO.
94-F3000-05-BT	COOK	102	11
STA.	TO STA.		
IDOT PROJECT NO. TE-D001(610)			
CENTENNIAL TRAIL			
CONTRACT NO. 83859			

PROP. CURVE CL-1
 PI STA = 0+007.39
 N = 555,764.424
 E = 325,355.501
 $\Delta = 27^\circ 40' 53''$ (LT)
 R = 30,000 m
 T = 7,391 m
 L = 14,494 m

BEGIN NEW CONSTRUCTION STA. 0+000
 N = 555,762.434
 E = 325,351.105

PROPOSED BICYCLE TRAIL
 AGGREGATE BASE COURSE, TYPE B, 150 mm
 HOT-MIX ASPHALT SURFACE COURSE, MIX C, NS0, 50mm
 PAINT PAVT. MKG. LINE 100 mm (SOLID YELLOW ALONG C)



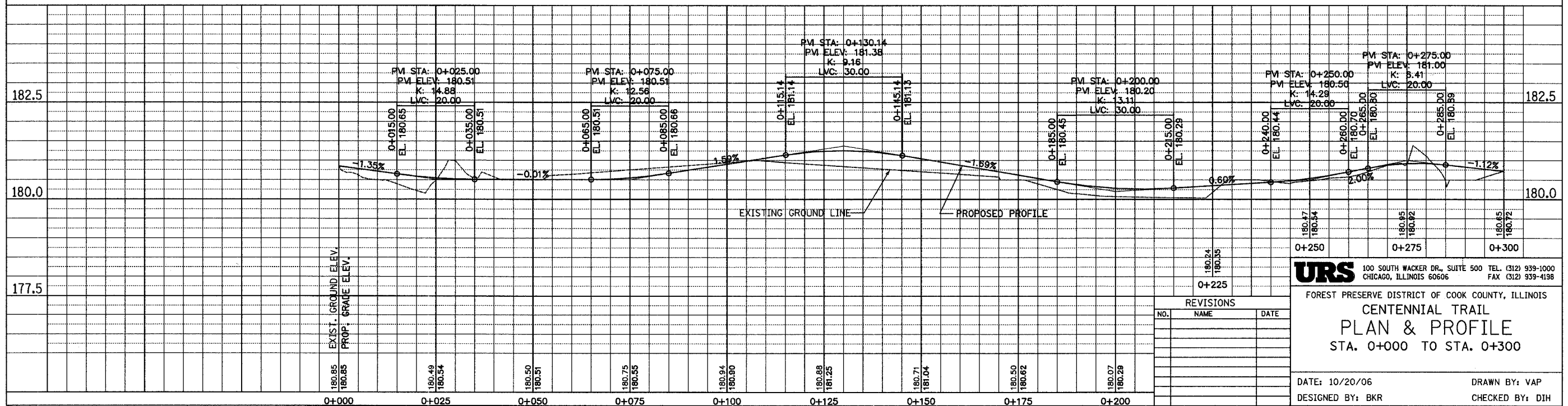
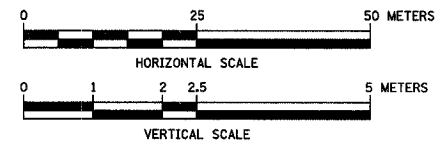
LEGEND

- +— SWALE TIP
- +—+ DITCH SUMMIT
- + DITCH CHECK
- +— PROPOSED CULVERT
- - - EXISTING CULVERT
- EXISTING MANHOLE
- - - EXISTING FENCE
- ▲ FLARED END SECTION
- +— PERIMETER EROSION BARRIER
- ////// GUARD RAIL REMOVAL

NO MOTOR VEHICLES
 R5-3
 600mmX600mm

PROP. CURVE CL-2
 PI STA = 0+024.72
 N = 555,779.371
 E = 325,368.678
 $\Delta = 27^\circ 42' 32''$ (RT)
 R = 30,000 m
 T = 7,399 m
 L = 14,508 m

PROP. CURVE CL-3
 PI STA = 0+199.97
 N = 555,851.670
 E = 325,528.631
 $\Delta = 1^\circ 29' 07''$ (RT)
 R = 1000,000 m
 T = 12,963 m
 L = 25,925 m



REVISIONS		
NO.	NAME	DATE

URS 100 SOUTH WACKER DR., SUITE 500 TEL. (312) 939-1000
 CHICAGO, ILLINOIS 60606 FAX (312) 939-4198

FOREST PRESERVE DISTRICT OF COOK COUNTY, ILLINOIS
**CENTENNIAL TRAIL
 PLAN & PROFILE**
 STA. 0+000 TO STA. 0+300

DATE: 10/20/06 DRAWN BY: VAP
 DESIGNED BY: BKR CHECKED BY: DIH