

SECTION	COUNTY	TOTAL SHEETS	SHEET NO.
94-F3000-05-BT	COOK	102	13
STA. TO STA.		IDOT PROJECT NO. TE-0001(610)	
CENTENNIAL TRAIL		CONTRACT NO. 83859	

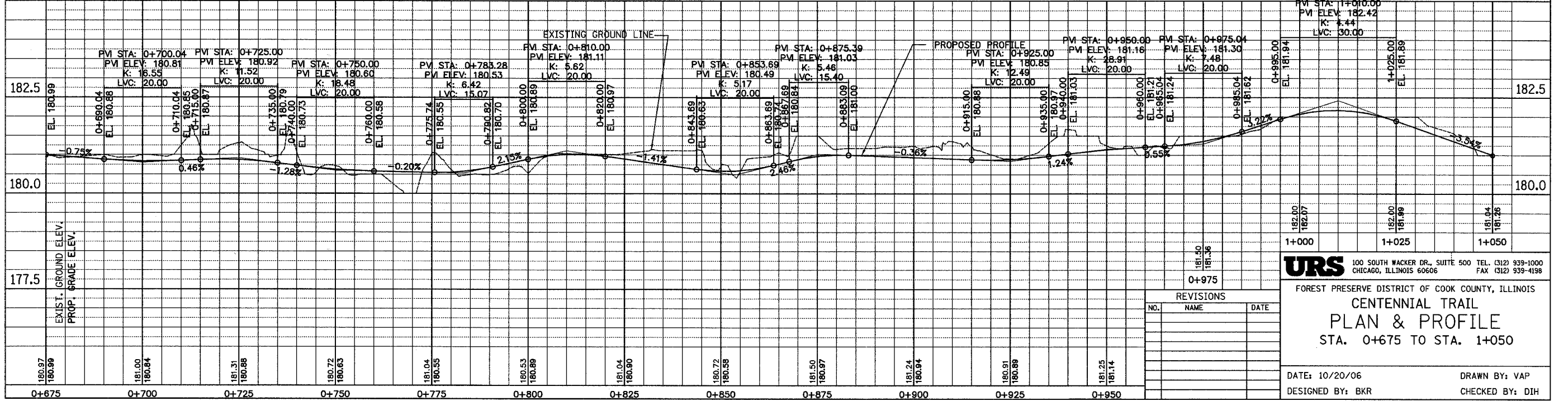
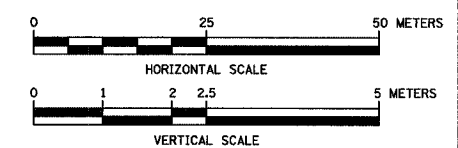
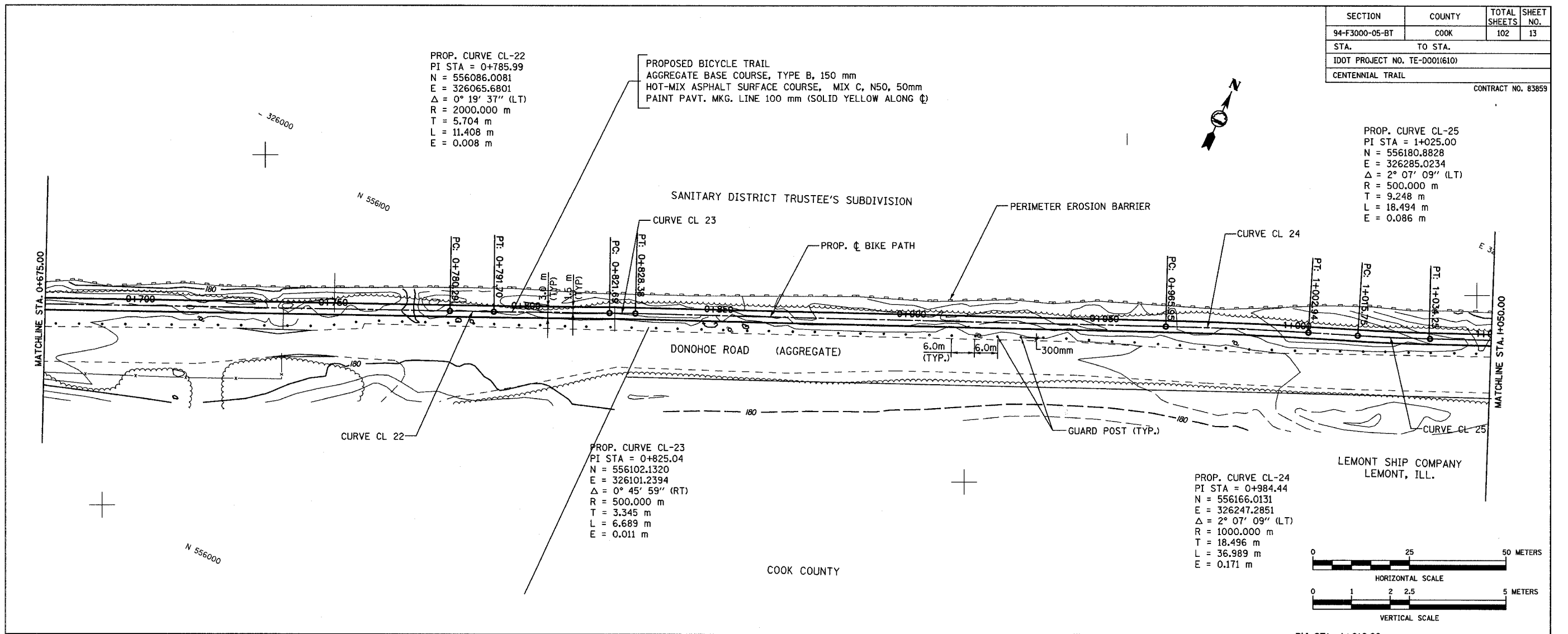
PROP. CURVE CL-22
 PI STA = 0+785.99
 N = 556086.0081
 E = 326065.6801
 $\Delta = 0^\circ 19' 37''$ (LT)
 R = 2000.000 m
 T = 5.704 m
 L = 11.408 m
 E = 0.008 m

PROPOSED BICYCLE TRAIL
 AGGREGATE BASE COURSE, TYPE B, 150 mm
 HOT-MIX ASPHALT SURFACE COURSE, MIX C, N50, 50mm
 PAINT PAVT. MKG. LINE 100 mm (SOLID YELLOW ALONG ϕ)

PROP. CURVE CL-25
 PI STA = 1+025.00
 N = 556180.8828
 E = 326285.0234
 $\Delta = 2^\circ 07' 09''$ (LT)
 R = 500.000 m
 T = 9.248 m
 L = 18.494 m
 E = 0.086 m

PROP. CURVE CL-23
 PI STA = 0+825.04
 N = 556102.1320
 E = 326101.2394
 $\Delta = 0^\circ 45' 59''$ (RT)
 R = 500.000 m
 T = 3.345 m
 L = 6.689 m
 E = 0.011 m

PROP. CURVE CL-24
 PI STA = 0+984.44
 N = 556166.0131
 E = 326247.2851
 $\Delta = 2^\circ 07' 09''$ (LT)
 R = 1000.000 m
 T = 18.496 m
 L = 36.989 m
 E = 0.171 m



URS 100 SOUTH WACKER DR., SUITE 500 TEL. (312) 939-1000
 CHICAGO, ILLINOIS 60606 FAX (312) 939-4198

FOREST PRESERVE DISTRICT OF COOK COUNTY, ILLINOIS
CENTENNIAL TRAIL
PLAN & PROFILE
 STA. 0+675 TO STA. 1+050

DATE: 10/20/06 DRAWN BY: VAP
 DESIGNED BY: BKR CHECKED BY: DIH

REVISIONS		
NO.	NAME	DATE