

SECTION	COUNTY	TOTAL SHEETS	SHEET NO.
94-F3000-05-BT	COOK	102	36
STA. TO STA.			
IDOT PROJECT NO. TE-D001(610)			
CENTENNIAL TRAIL			
CONTRACT NO. 83859			

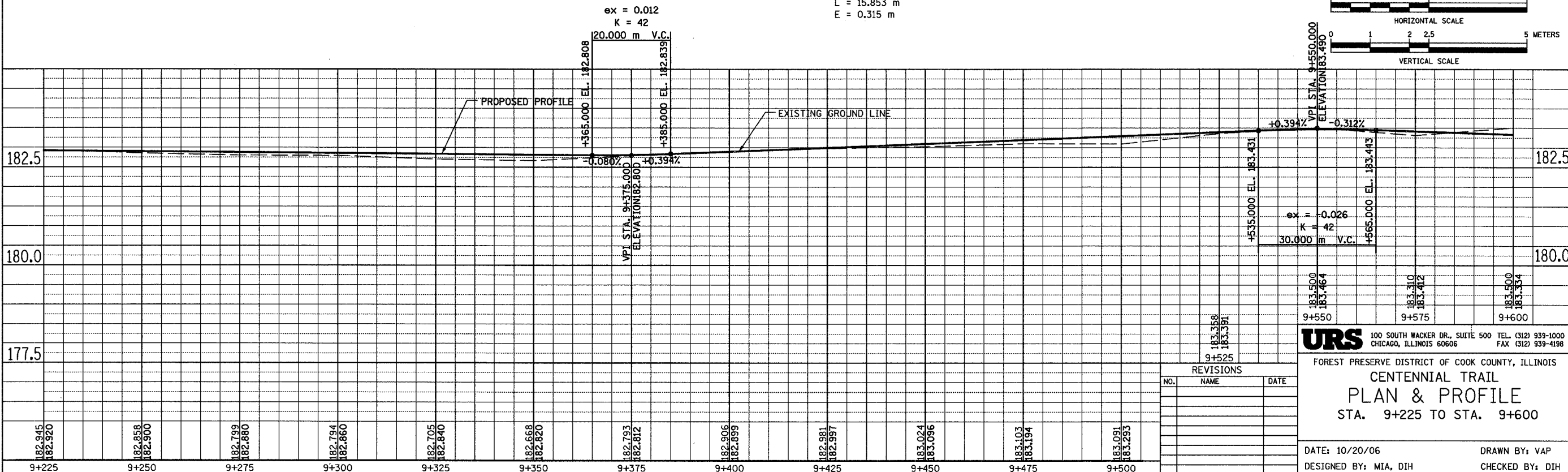
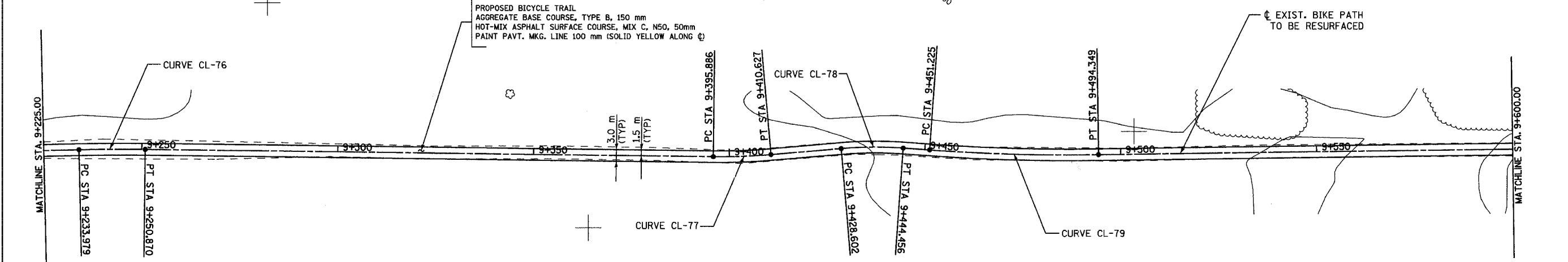
CURVE CL-77
 PI STA = 9+403.263
 N = 559,637.314
 E = 333,321.823
 $\Delta = 5^\circ 37' 51''$ (LT)
 R = 150,000 m
 T = 7.377 m
 L = 14.741 m
 E = 0.181 m

CURVE CL-79
 PI STA = 9+472.800
 N = 559,677.316
 E = 333,378.492
 $\Delta = 4^\circ 56' 30''$ (LT)
 R = 500,000 m
 T = 21.575 m
 L = 43.124 m
 E = 0.465 m

CURVE CL-76
 PI STA = 9+242.425
 N = 559,546.620
 E = 333,188.993
 $\Delta = 1^\circ 56' 08''$ (RT)
 R = 500,000 m
 T = 8.446 m
 L = 16.891 m
 E = 0.071 m

CURVE CL-78
 PI STA = 9+436.546
 N = 559,658.696
 E = 333,347.345
 $\Delta = 9^\circ 05' 00''$ (RT)
 R = 100,000 m
 T = 7.943 m
 L = 15.853 m
 E = 0.315 m

PROPOSED BICYCLE TRAIL
 AGGREGATE BASE COURSE, TYPE B, 150 mm
 HOT-MIX ASPHALT SURFACE COURSE, MIX C, N50, 50mm
 PAINT PAVT. MKG. LINE 100 mm (SOLID YELLOW ALONG ϕ)



NO.	NAME	DATE

URS 100 SOUTH WACKER DR., SUITE 500 TEL. (312) 939-1000
 CHICAGO, ILLINOIS 60606 FAX (312) 939-4198

FOREST PRESERVE DISTRICT OF COOK COUNTY, ILLINOIS
CENTENNIAL TRAIL
PLAN & PROFILE
 STA. 9+225 TO STA. 9+600

DATE: 10/20/06 DRAWN BY: VAP
 DESIGNED BY: MIA, DIH CHECKED BY: DIH