

SECTION	COUNTY	TOTAL SHEETS	SHEET NO.
94-F3000-05-BT	COOK	102	46
STA. TO STA.			
IDOT PROJECT NO. TE-D001(610)			
CENTENNIAL TRAIL			
CONTRACT NO. 83859			

CURVE CL-112
 PI STA = 13+045.568
 N = 561,646.836
 E = 336,348.579
 $\Delta = 2^\circ 37' 03''$ (LT)
 R = 200.000 m
 T = 4.569 m
 L = 9.137 m
 E = 0.052 m

CURVE CL-114
 PI STA = 13+127.829
 N = 561,693.884
 E = 336,416.012
 $\Delta = 4^\circ 55' 22''$ (LT)
 R = 100.000 m
 T = 4.299 m
 L = 8.592 m
 E = 0.092 m

CURVE CL-117
 PI STA = 13+253.869
 N = 561,763.464
 E = 336,521.042
 $\Delta = 1^\circ 57' 14''$ (LT)
 R = 400.000 m
 T = 6.821 m
 L = 13.641 m
 E = 0.058 m

CURVE CL-118
 PI STA = 13+347.207
 N = 561,814.274
 E = 336,599.339
 $\Delta = 5^\circ 40' 41''$ (LT)
 R = 200.000 m
 T = 9.918 m
 L = 19.821 m
 E = 0.246 m

CURVE CL-111
 PI STA = 13+021.450
 N = 561,633.583
 E = 336,328.413
 $\Delta = 5^\circ 17' 33''$ (RT)
 R = 200.000 m
 T = 9.244 m
 L = 18.474 m
 E = 0.214 m

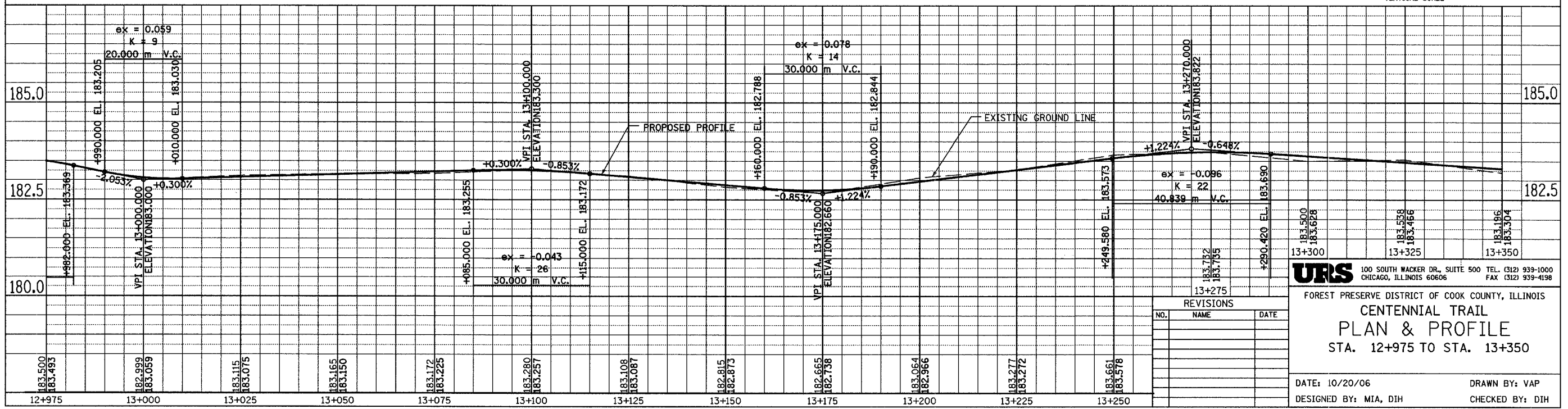
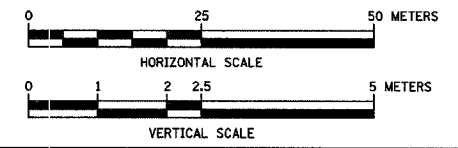
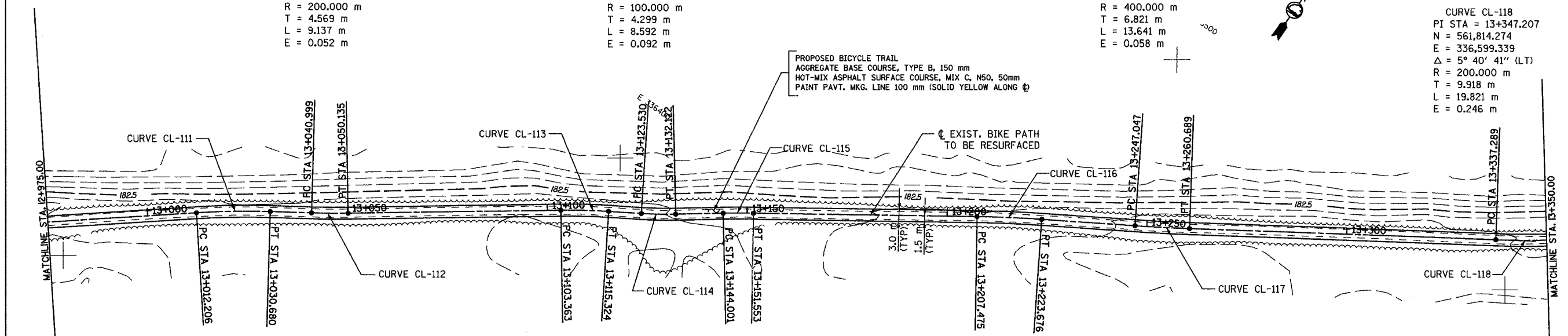
CURVE CL-113
 PI STA = 13+109.346
 N = 561,684.262
 E = 336,400.224
 $\Delta = 4^\circ 34' 08''$ (RT)
 R = 150.000 m
 T = 5.984 m
 L = 11.961 m
 E = 0.119 m

CURVE CL-115
 PI STA = 13+147.778
 N = 561,705.693
 E = 336,432.096
 $\Delta = 2^\circ 09' 48''$ (RT)
 R = 200.000 m
 T = 3.776 m
 L = 7.551 m
 E = 0.036 m

CURVE CL-116
 PI STA = 13+215.578
 N = 561,743.726
 E = 336,488.226
 $\Delta = 3^\circ 05' 39''$ (RT)
 R = 300.000 m
 T = 8.103 m
 L = 16.201 m
 E = 0.109 m

PROPOSED BICYCLE TRAIL
 AGGREGATE BASE COURSE, TYPE B, 150 mm
 HOT-MIX ASPHALT SURFACE COURSE, MIX C, N50, 50mm
 PAINT PAVT. MKG. LINE 100 mm (SOLID YELLOW ALONG ϕ)

EXIST. BIKE PATH
 TO BE RESURFACED



NO.	NAME	DATE

URS
 100 SOUTH WACKER DR., SUITE 500 TEL. (312) 939-1000
 CHICAGO, ILLINOIS 60606 FAX (312) 939-4198

FOREST PRESERVE DISTRICT OF COOK COUNTY, ILLINOIS
CENTENNIAL TRAIL
PLAN & PROFILE
 STA. 12+975 TO STA. 13+350

DATE: 10/20/06 DRAWN BY: VAP
 DESIGNED BY: MIA, DIH CHECKED BY: DIH