

SECTION	COUNTY	TOTAL SHEETS	SHEET NO.
94-F3000-05-BT	COOK	102	47
STA. TO STA.			
IDOT PROJECT NO. TE-0001(610)			
CENTENNIAL TRAIL			

CONTRACT NO. 83859

**CURVE CL-121**  
 PI STA = 13+522.516  
 N = 561,909.996  
 E = 336,745.849  
 $\Delta = 10^\circ 33' 35''$  (LT)  
 R = 80,000 m  
 T = 7.393 m  
 L = 14,744 m  
 E = 0.341 m

**CURVE CL-123**  
 PI STA = 13+597.348  
 N = 561,948.689  
 E = 336,809.726  
 $\Delta = 16^\circ 43' 37''$  (LT)  
 R = 70,000 m  
 T = 10.291 m  
 L = 20.436 m  
 E = 0.752 m

**CURVE CL-119**  
 PI STA = 13+390.866  
 N = 561,841.558  
 E = 336,633.444  
 $\Delta = 6^\circ 22' 53''$  (RT)  
 R = 300,000 m  
 T = 16.724 m  
 L = 33.413 m  
 E = 0.466 m

**CURVE CL-120**  
 PI STA = 13+501.448  
 N = 561,900.629  
 E = 336,726.968  
 $\Delta = 5^\circ 53' 26''$  (RT)  
 R = 100,000 m  
 T = 5.145 m  
 L = 10.281 m  
 E = 0.132 m

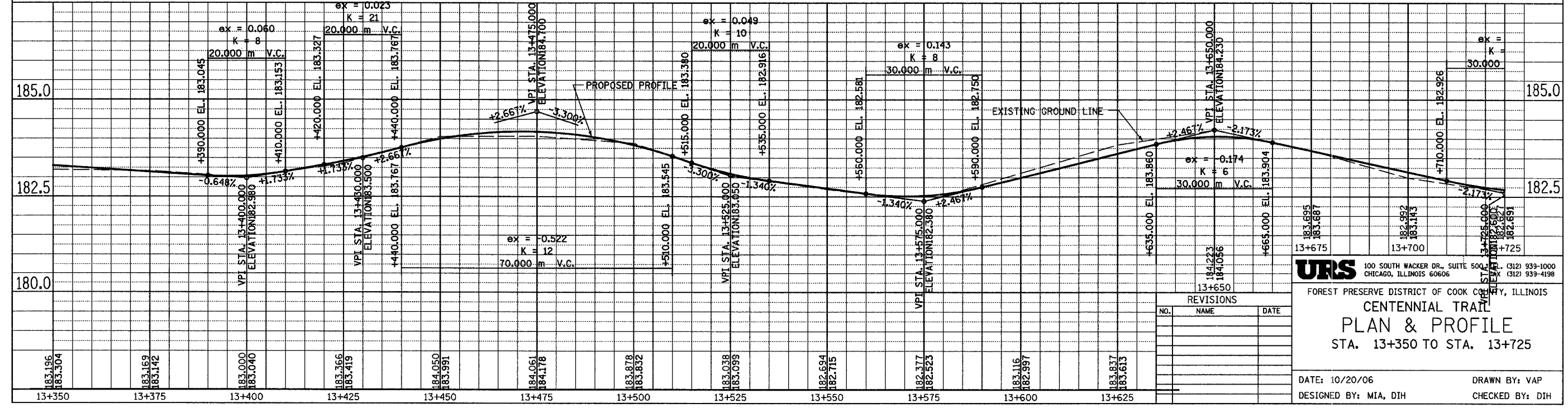
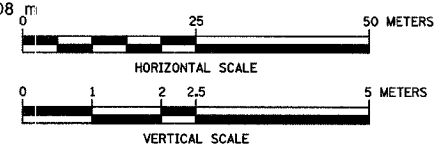
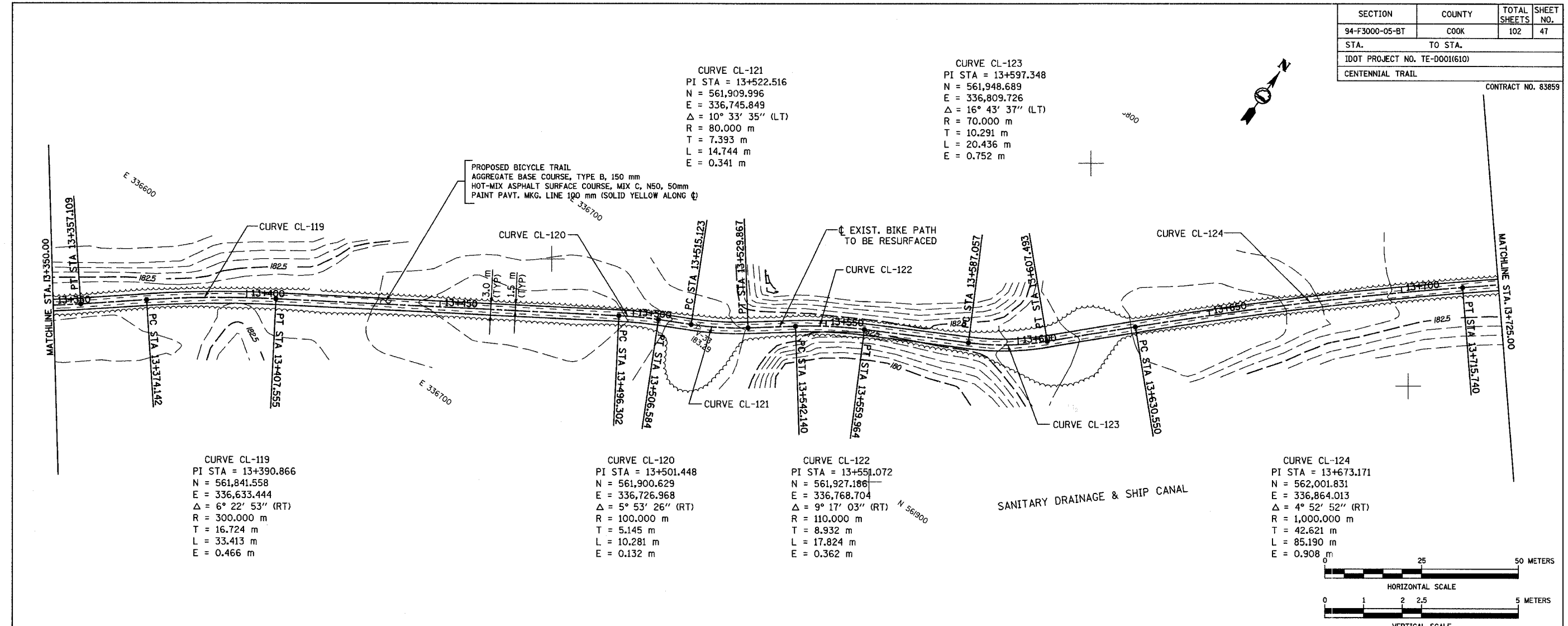
**CURVE CL-122**  
 PI STA = 13+551.072  
 N = 561,927.186  
 E = 336,768.704  
 $\Delta = 9^\circ 17' 03''$  (RT)  
 R = 110,000 m  
 T = 8.932 m  
 L = 17.824 m  
 E = 0.362 m

**CURVE CL-124**  
 PI STA = 13+673.171  
 N = 562,001.831  
 E = 336,864.013  
 $\Delta = 4^\circ 52' 52''$  (RT)  
 R = 1,000,000 m  
 T = 42.621 m  
 L = 85.190 m  
 E = 0.908 m

PROPOSED BICYCLE TRAIL  
 AGGREGATE BASE COURSE, TYPE B, 150 mm  
 HOT-MIX ASPHALT SURFACE COURSE, MIX C, N50, 50mm  
 PAINT PAVT. MKG. LINE 100 mm (SOLID YELLOW ALONG  $\phi$ )

EXIST. BIKE PATH  
 TO BE RESURFACED

SANITARY DRAINAGE & SHIP CANAL



REVISIONS		
NO.	NAME	DATE

**URS** 100 SOUTH WACKER DR., SUITE 500, CHICAGO, ILLINOIS 60606 (312) 939-1000 (312) 939-4198

FOREST PRESERVE DISTRICT OF COOK COUNTY, ILLINOIS

**CENTENNIAL TRAIL**  
**PLAN & PROFILE**  
 STA. 13+350 TO STA. 13+725

DATE: 10/20/06  
 DESIGNED BY: MIA, DIH  
 DRAWN BY: VAP  
 CHECKED BY: DIH