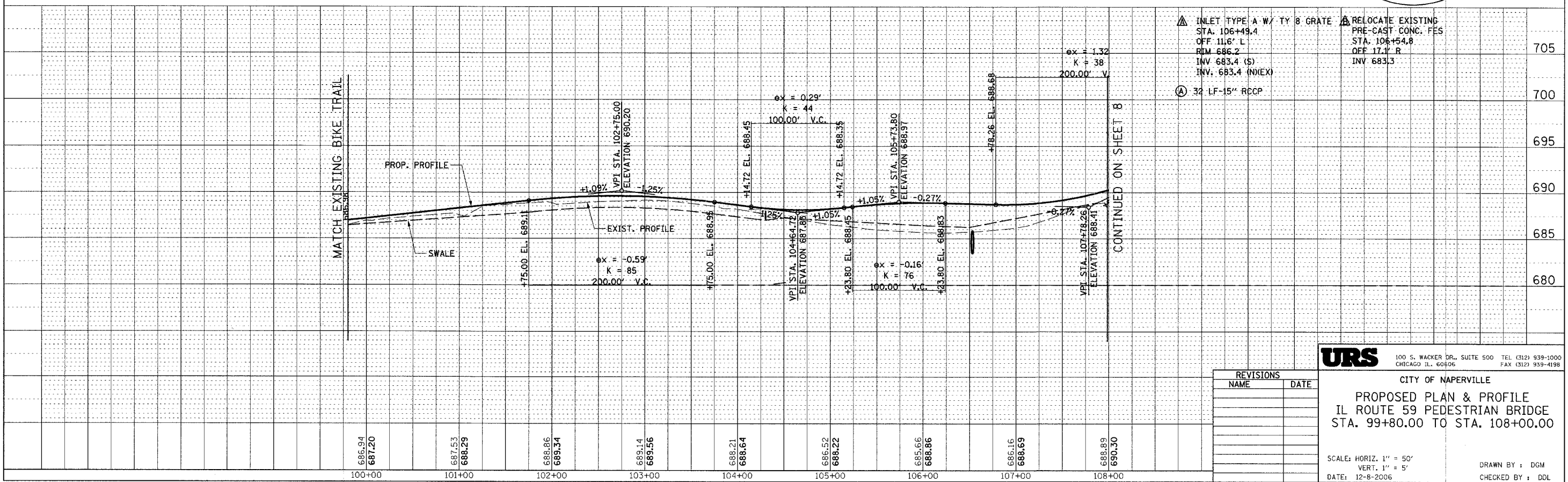
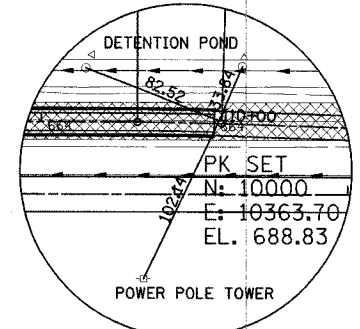
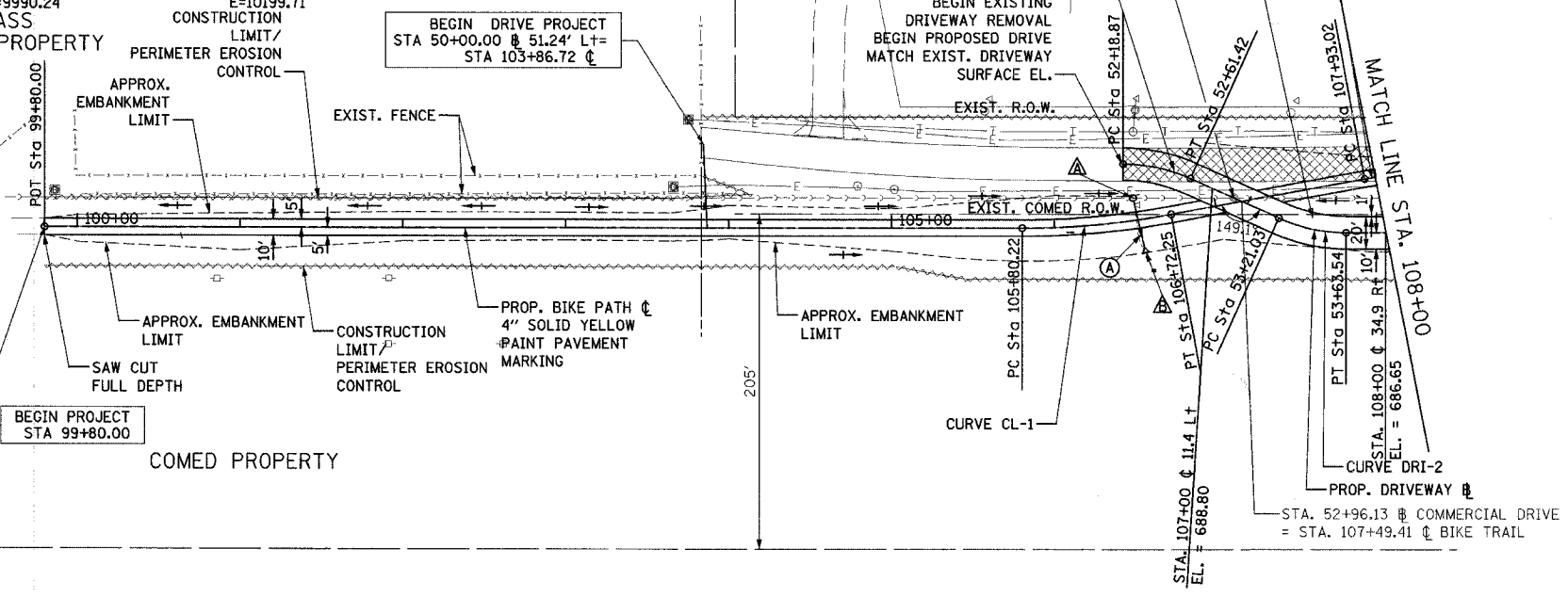
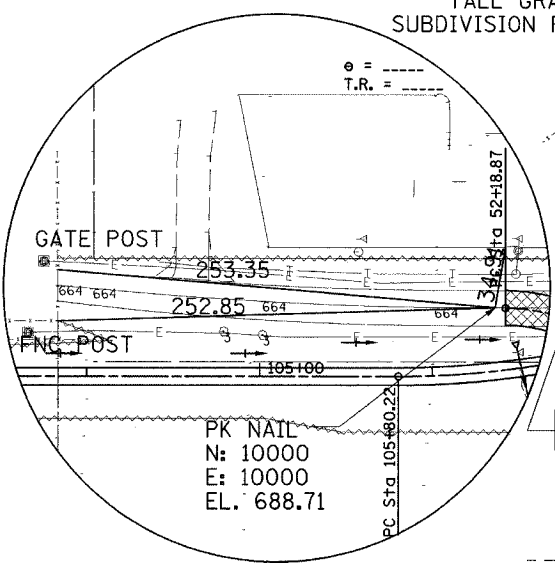


PROP. CURVE DRI-1 PI STA. = 52+40.46 Δ = 24° 22' 11" (RT) D = 57° 17' 45" R = 100.00' T = 21.59' L = 42.53' E = 2.30' e = N/A T.R. = N/A S.E. RUN = N/A P.C. STA. = 52+18.87 P.T. STA. = 52+61.40 N=9999.87 E=10027.65	PROP. CURVE DRI-2 PI STA. = 53+42.61 Δ = 24° 21' 16" (LT) D = 57° 17' 45" R = 100.00' T = 21.58' L = 42.51' E = 2.30' e = N/A T.R. = N/A S.E. RUN = N/A P.C. STA. = 53+21.03 P.T. STA. = 53+63.54 N=9990.97 E=10047.33	PROP. CURVE CL-1 PI STA. = 106+26.36 Δ = 10° 32' 45" (LT) D = 11° 27' 33" R = 500.00' T = 46.14' L = 92.03' E = 2.12' e = N/A T.R. = N/A S.E. RUN = N/A P.C. STA. = 105+80.22 P.T. STA. = 106+72.25 N=9960.14 E=9990.24	PROP. CURVE CL-2 PI STA. = 108+39.17 Δ = 10° 32' 45" (RT) D = 11° 27' 33" R = 500.00' T = 46.14' L = 92.03' E = 2.12' e = N/A T.R. = N/A S.E. RUN = N/A P.C. STA. = 107+93.02 P.T. STA. = 108+85.05 N=9999.13 E=10199.71
---	---	--	---

F.A. RTE.	SECTION	COUNTY	TOTAL SHEETS	SHEET NO.
	05-00130-00-BR	WILL	41	5
STA. 99+80.00		TO STA. 108+00.00		
FED. ROAD DIST. NO.		ILLINOIS	FED. AID PROJECT	
CONTRACT NO. 83889				

LEGEND

- ☒ PAVEMENT REMOVAL
- SWALE
- CATCH BASIN
- END SECTION



▲ INLET TYPE A W/ TY 8 GRATE STA. 106+49.4 OFF 11.6' L RIM 686.2 INV 683.4 (S) INV 683.4 (NEX)	▲ RELOCATE EXISTING PRE-CAST CONC. FES STA. 106+54.8 OFF 17.1' R INV 683.3	705
○ 32 LF-15" RCCP		700
		695
		690
		685
		680

REVISIONS	
NAME	DATE

URS 100 S. WACKER DR., SUITE 500 TEL (312) 939-1000
CHICAGO IL, 60606 FAX (312) 939-4198

CITY OF NAPERVILLE

PROPOSED PLAN & PROFILE
IL ROUTE 59 PEDESTRIAN BRIDGE
STA. 99+80.00 TO STA. 108+00.00

SCALE: HORIZ. 1" = 50'
VERT. 1" = 5'

DATE: 12-8-2006

DRAWN BY: DGM
CHECKED BY: DDL