

PROP. CURVE CL-3
 PI STA. = 109+80.00
 $\Delta = 1^\circ 51' 20''$ (RT)
 $D = 3^\circ 49' 11''$
 $R = 1,500.00'$
 $T = 24.29'$
 $L = 48.58'$
 $E = 0.20'$
 $e = N/A$
 $T.R. = N/A$
 $S.E. RUN = N/A$
 $P.C. STA. = 109+55.71$
 $P.T. STA. = 110+04.29$
 $N=999.13$
 $E=10340.80$

SEE SHEETS 13-35 FOR STRUCTURAL SHEETS

PROP. CURVE CL-4
 PI STA. = 116+19.56
 $\Delta = 4^\circ 56' 45''$ (LT)
 $D = 9^\circ 32' 57''$
 $R = 600.00'$
 $T = 25.91'$
 $L = 51.79'$
 $E = 0.56'$
 $e = N/A$
 $T.R. = N/A$
 $S.E. RUN = N/A$
 $P.C. STA. = 115+93.65$
 $P.T. STA. = 116+45.44$
 $N=9978.43$
 $E=10980.03$

PROP. CURVE CL-5
 PI STA. = 116+99.12
 $\Delta = 3^\circ 05' 26''$ (RT)
 $D = 9^\circ 32' 57''$
 $R = 600.00'$
 $T = 16.19'$
 $L = 32.36'$
 $E = 0.22'$
 $e = N/A$
 $T.R. = N/A$
 $S.E. RUN = N/A$
 $P.C. STA. = 116+82.94$
 $P.T. STA. = 117+15.30$
 $N=9982.72$
 $E=11059.51$

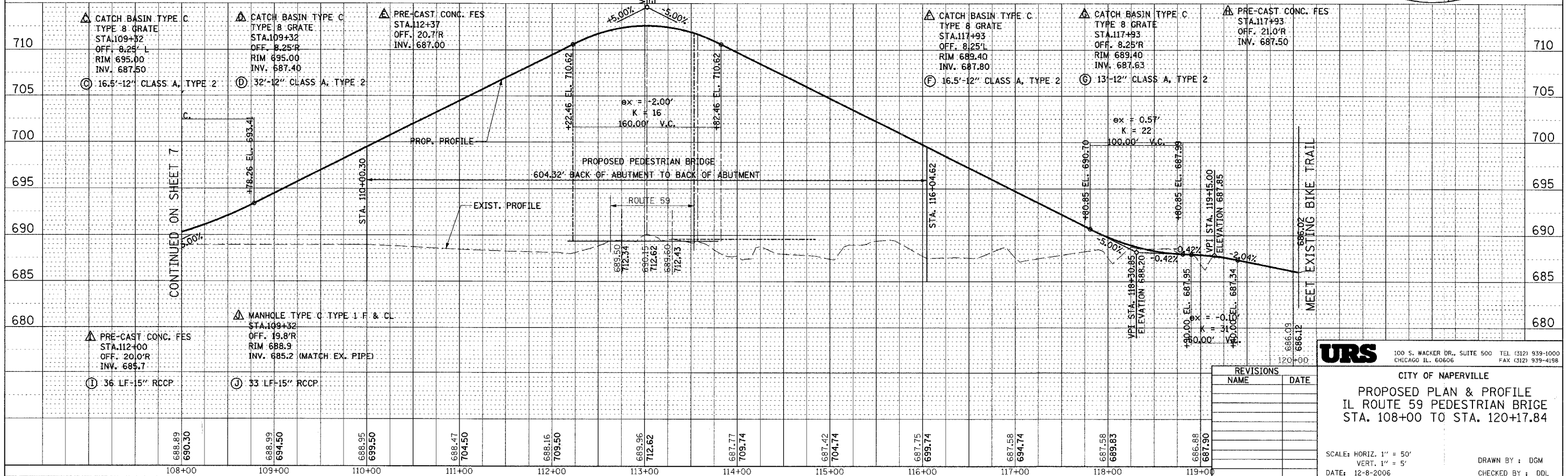
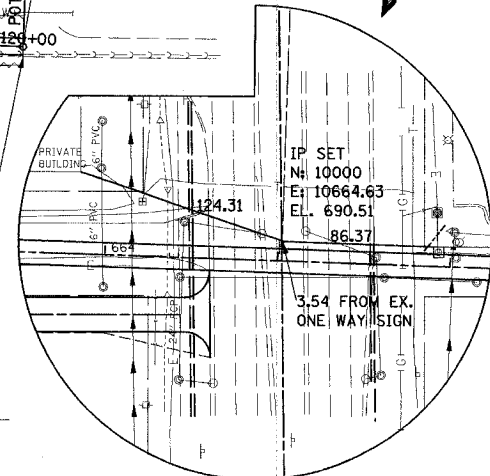
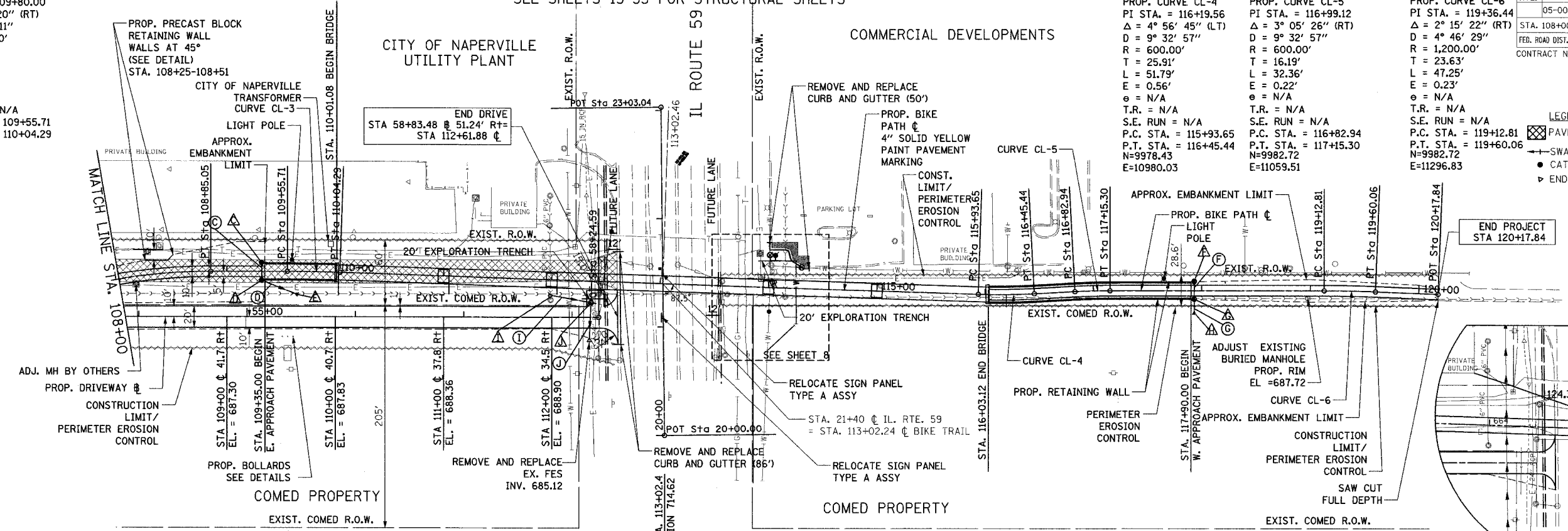
PROP. CURVE CL-6
 PI STA. = 119+36.44
 $\Delta = 2^\circ 15' 22''$ (RT)
 $D = 4^\circ 46' 29''$
 $R = 1,200.00'$
 $T = 23.63'$
 $L = 47.25'$
 $E = 0.23'$
 $e = N/A$
 $T.R. = N/A$
 $S.E. RUN = N/A$
 $P.C. STA. = 119+12.81$
 $P.T. STA. = 119+60.06$
 $N=9982.72$
 $E=11296.83$

F.A. RTE.	SECTION	COUNTY	TOTAL SHEETS	SHEET NO.
05-00130-00-BR	WILL	ILLINOIS	41	6

STA. 108+00.00 TO STA. 120+17.84
 FED. ROAD DIST. NO. ILLINOIS FED. AID PROJECT
 CONTRACT NO. 83889

LEGEND

- PAVEMENT REMOVAL
- SWALE
- CATCH BASIN
- END SECTION



STATION	DESCRIPTION	ELEVATION
108+00	CATCH BASIN TYPE C TYPE 8 GRATE STA.109+32 OFF. 8.25' L RIM 695.00 INV. 687.50	688.89 690.30
109+00	CATCH BASIN TYPE C TYPE 8 GRATE STA.109+32 OFF. 8.25' R RIM 695.00 INV. 687.40	688.99 694.50
110+00	PRE-CAST CONC. FES STA.112+37 OFF. 20.7' R INV. 687.00	688.95 699.50
111+00	PRE-CAST CONC. FES STA.112+00 OFF. 20.0' R INV. 685.7	688.47 704.50
112+00	MANHOLE TYPE C TYPE 1 F & CL STA.109+32 OFF. 19.8' R RIM 688.9 INV. 685.2 (MATCH EX. PIPE)	688.16 709.50
113+00	PRE-CAST CONC. FES STA.112+37 OFF. 20.7' R INV. 687.00	689.96 712.62
114+00	CATCH BASIN TYPE C TYPE 8 GRATE STA.117+93 OFF. 8.25' L RIM 689.40 INV. 687.80	687.77 709.74
115+00	CATCH BASIN TYPE C TYPE 8 GRATE STA.117+93 OFF. 8.25' R RIM 689.40 INV. 687.63	687.42 704.74
116+00	PRE-CAST CONC. FES STA.117+93 OFF. 21.0' R INV. 687.50	687.75 699.74
117+00	CATCH BASIN TYPE C TYPE 8 GRATE STA.117+93 OFF. 8.25' L RIM 689.40 INV. 687.80	687.58 694.74
118+00	CATCH BASIN TYPE C TYPE 8 GRATE STA.117+93 OFF. 8.25' R RIM 689.40 INV. 687.63	687.58 699.83
119+00	PRE-CAST CONC. FES STA.117+93 OFF. 21.0' R INV. 687.50	686.88 687.90

REVISIONS	NAME	DATE

URS 100 S. WACKER DR., SUITE 500 TEL (312) 939-1000
 CHICAGO IL 60606 FAX (312) 939-4198

CITY OF NAPERVILLE
**PROPOSED PLAN & PROFILE
 IL ROUTE 59 PEDESTRIAN BRIDGE
 STA. 108+00 TO STA. 120+17.84**

SCALE: HORIZ. 1" = 50'
 VERT. 1" = 5'
 DATE: 12-8-2006

DRAWN BY: DGM
 CHECKED BY: DDL