

STATE OF ILLINOIS
DEPARTMENT OF TRANSPORTATION

ROUTE NO.	SECTION	COUNTY	TOTAL SHEETS	SHEET NO.
F.A.P.	05-00130-00-BR	WILL	41	19
FED. ROAD DIST. NO. 7		ILLINOIS	FED. AID PROJECT-	
CONTRACT NO. 83889				

SHEET NO. 7
OF 23 SHEETS

BILL OF MATERIAL

Bar	Size	Length	Shape	No.
h(E)	#5	17'-3"	—	11
n(E)	#9	10'-11"	—	30
p(E)	#10	22'-6"	—	7
s1(E)	#5	22'-6"	—	8
s2(E)	#5	16'-7"	—	6
s3(E)	#5	10'-8"	—	6
s4(E)	#5	12'-8"	—	6
s5(E)	#5	13'-0"	—	12
t(E)	#8	9'-8"	—	28
u1(E)	#6	15'-6"	—	14
u2(E)	#6	8'-5"	—	14
u3(E)	#6	11'-7"	—	8
u4(E)	#6	14'-11"	—	8
u5(E)	#6	20'-3"	—	8
u6(E)	#5	6'-11"	—	24
v(E)	#9	19'-5"	—	30
w(E)	#8	11'-8"	—	40
Concrete Structures	Cu. Yd.			38
Reinforcement Bars, Epoxy Coated	lb.			7,780
Structure Excavation	Cu. Yd.			33.3
Concrete Sealer	Sq. Ft.			594
Furnishing Steel HP12x53 Piles	Foot			308
Driving Piles	Foot			308
Test Pile	Each			1
Steel HP 12x53				
Pile Shoes	Each			8
Form Liner	Sq. Ft.			162.2
Textured Surface				

DATA TABLE

	El. "A"	El. "B"	"H1"	"H2"	N1	El. "C"	El. "D"	El. "E"
Pier 2	707.51	684.20	23'-3 ³ / ₄ "	5'-4 ³ / ₈ "	6	685.20	641.20	706.12

NOTES:

1. Reinforcement Bars designated (E) shall be epoxy coated.
2. Concrete clear cover shall be 2" minimum unless noted otherwise.
3. For Anchor Bolt Details, see Sheet 9. Truss fabricator shall determine size and location of anchor bolts. Cost included with PEDESTRIAN TRUSS SUPERSTRUCTURE.
4. All edges shall have standard 3/4" chamfers except as noted.
5. Min. Lap for Bar #5 = 2'-2", #6 = 2'-7", #9 = 5'-9".
6. Space Reinforcement in Cap to miss Anchor Bolts.
7. For Architectural treatment of Piers see "Architectural Details" drawing.

PILE DATA

Type - Steel H-Piles (HP12x53)
Allowable Resistance Available = 100 Kips
Nominal Required Bearing = 300 Kips
Est. Length - 44 ft (Pier 2)

LEGEND

E.F. = Each Face
N.F. = Near Face
F.F. = Far Face

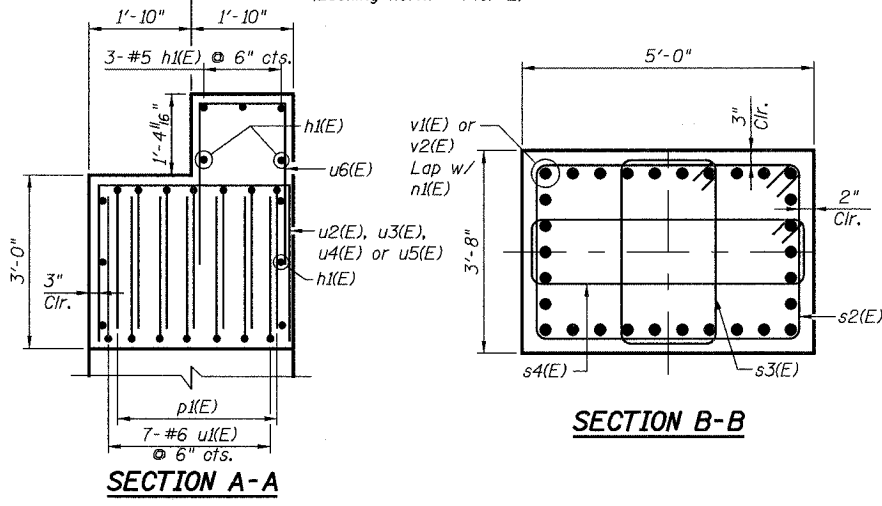
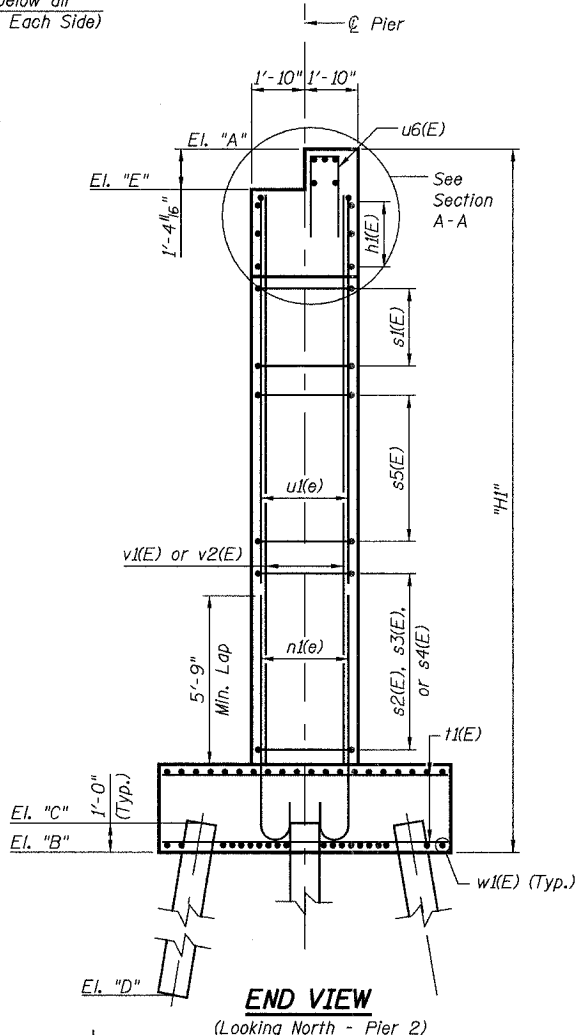
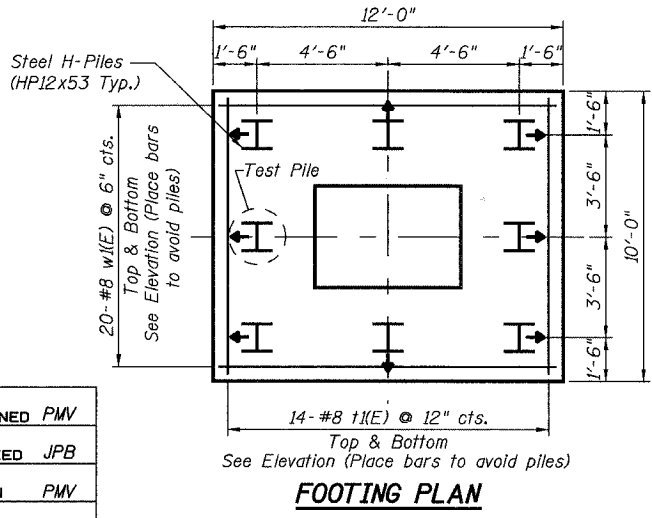
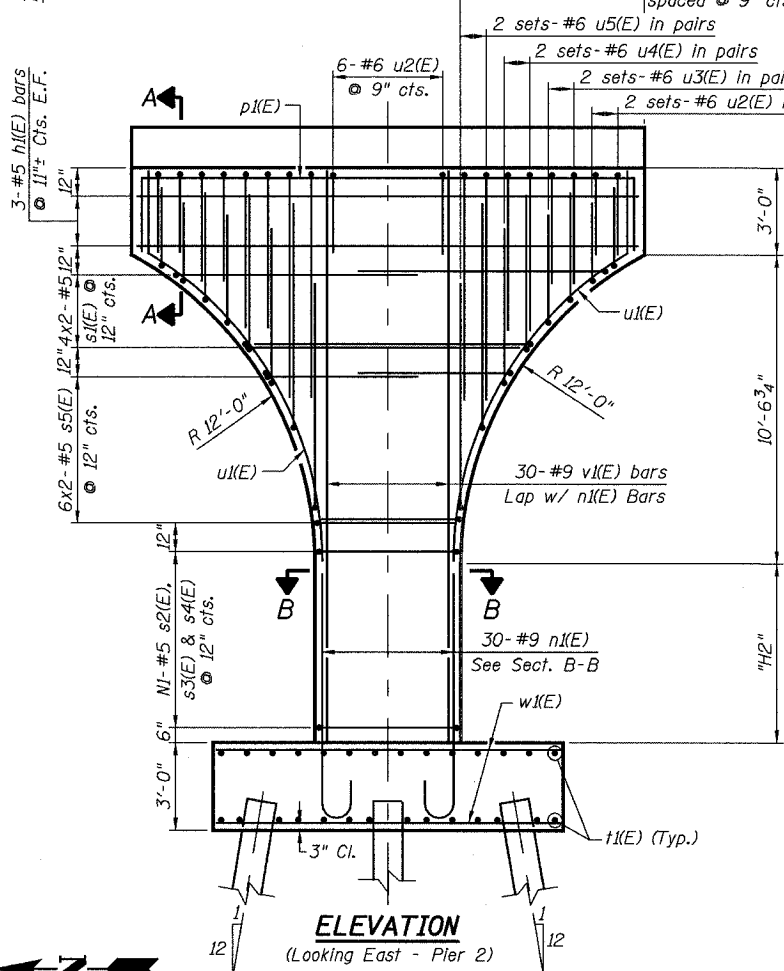
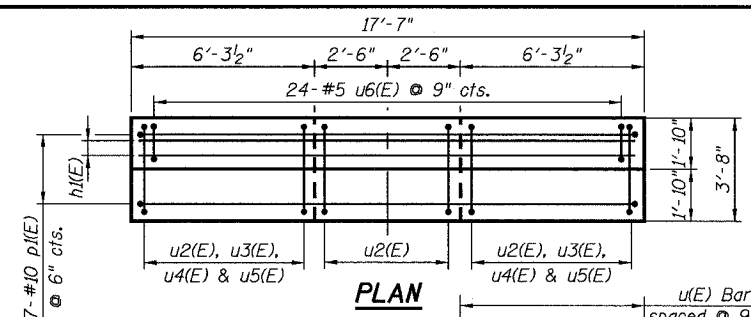
No. Req'd. - 7 per Pier
Test Piles - 1 per Pier

REVISIONS	
NAME	DATE

ILLINOIS DEPARTMENT OF TRANSPORTATION
PIER 2 DETAILS

ROUTE 59 PEDESTRIAN BRIDGE
CITY OF NAPERVILLE, WILL COUNTY

F.A.P. RTE. SECTION: 05-00130-00-BR
STATION 113+02.46 STRUCTURE NO. 099-6002
SCALE: N.T.S. DATE: 12/8/2006



c:\nperville_25365506_pedbridge\bridge\pre-fine\plans\drawings\07_pier_2_details.dgn 1/10/2007 2:35:13 PM

DESIGNED PMV
CHECKED JPB
DRAWN PMV
CHECKED JPB