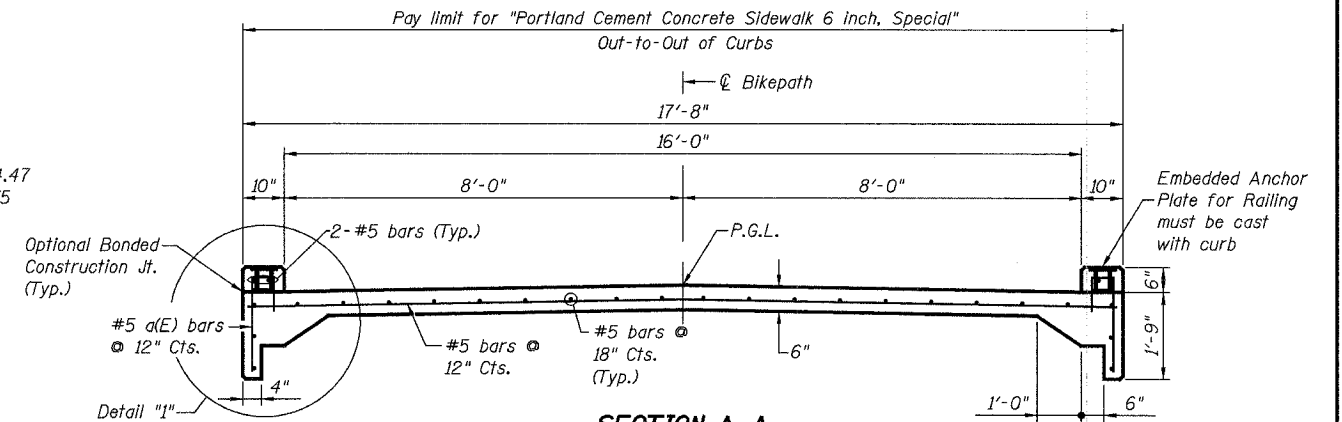
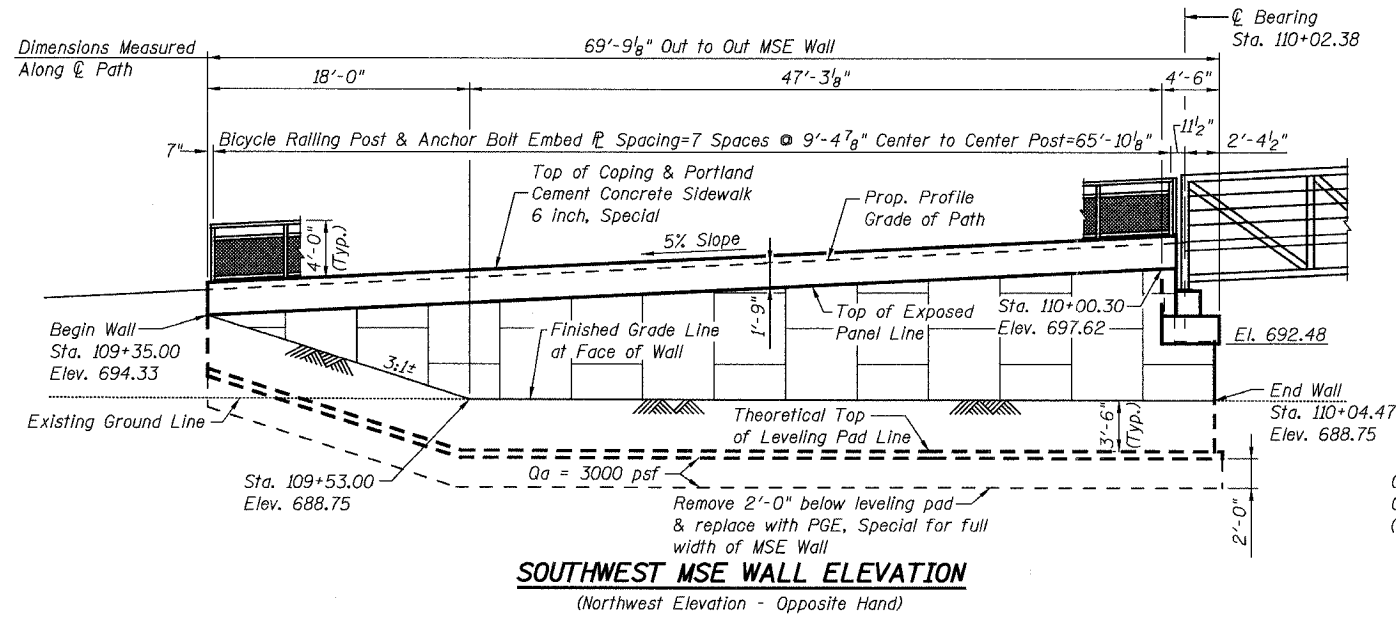


STATE OF ILLINOIS
DEPARTMENT OF TRANSPORTATION

ROUTE NO.	SECTION	COUNTY	TOTAL SHEETS	SHEET NO.
F.A.P.	05-00130-00-BR	WILL	41	22
FED. ROAD DIST. NO. 7		ILLINOIS	FED. AID PROJECT-	

SHEET NO. 10
OF 23 SHEETS

CONTRACT NO. 83889



(Portland Cement Concrete Sidewalk 6 inch, Special)
Cost of Reinforcement Bars, Epoxy Coated is included in the pay item "Portland Cement Concrete Sidewalk 6 inch, Special".

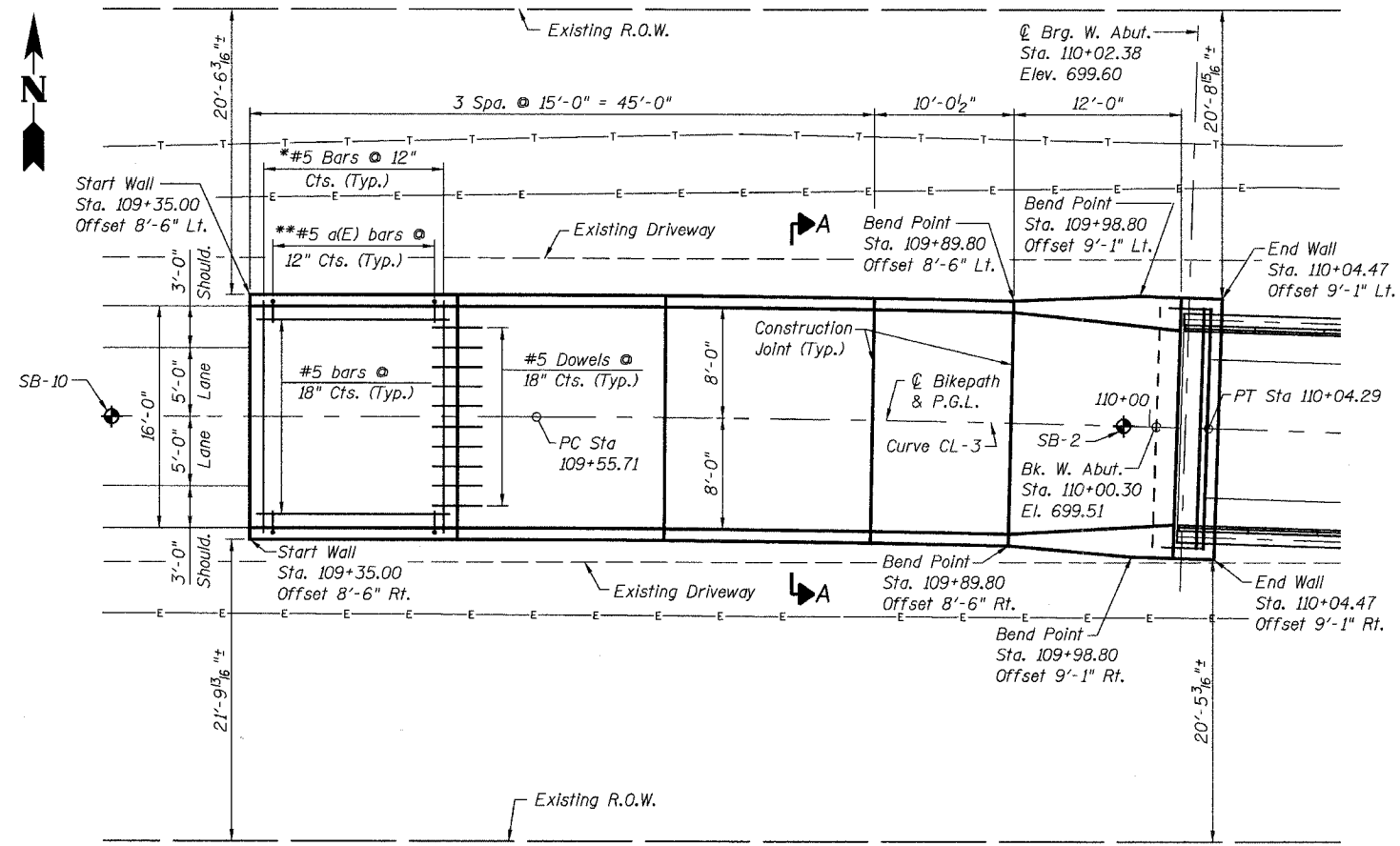
BILL OF MATERIAL

Pay Item	Unit	Quantity
Mechanically Stabilized Earth Retaining Wall	Sq. Ft.	1,492
Structure Excavation	Cu. Yd.	288
* Concrete Sealer	Sq. Ft.	145
Portland Cement Concrete Sidewalk 6", Special	Sq. Ft.	1,189
Porous Granular Embankment, Special	Cu. Yd.	143

All reinforcement bars shall be epoxy coated.
* See Sheet 12 for limits of Concrete Sealer on MSE Wall.

NOTES:

- See Sheet 12 for MSE Wall Details.
- See Sheet 14 for Railing Details.
- See Sheet 12 for Detail 1.
- For Architectural treatment of MSE Wall See "Architectural Details" drawing.
- See Plan at Abutments for curb plan and details, Sheet 14.



WEST MSE WALL PLAN

* Typ. Btwn. Jts.
** Typ. Ea. Side & Btwn. Jts.

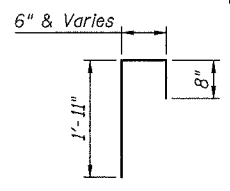
Note:
Offsets shown are to the outside edge of Curb which equals Face of Wall Offset +4".

CURVE DATA

CURVE CL-3

P.I. Sta. = 109+80.00
Δ = 1° 51' 20" (RT)
D = 3° 49' 11"
R = 1,500'
T = 24.29'
L = 48.58'
E = 0.20'
e = N/A
T.R. = N/A
S.E. Run = N/A
P.C. Sta. = 109+55.71
P.T. Sta. = 110+04.29

BAR a(E)



c:\naresville_25365506.psd\bridge\pre-final\plans\drawings\10_west_mse_wall_elevation_12/8/2006_1:36:43 PM

DESIGNED	MDS
CHECKED	JPB
DRAWN	MDS
CHECKED	JPB

URS
100 South Wacker Drive,
Suite 500
Chicago, IL 60606
(312) 939-1000

REVISIONS	
NAME	DATE

ILLINOIS DEPARTMENT OF TRANSPORTATION
**WEST MSE WALL
PLAN AND ELEVATION**
ROUTE 59 PEDESTRIAN BRIDGE
CITY OF NAPERVILLE, WILL COUNTY
F.A.P. RTE. SECTION: 05-00130-00-BR
STRUCTURE NO. 099-6002
SCALE: N.T.S. DATE: 12/8/2006