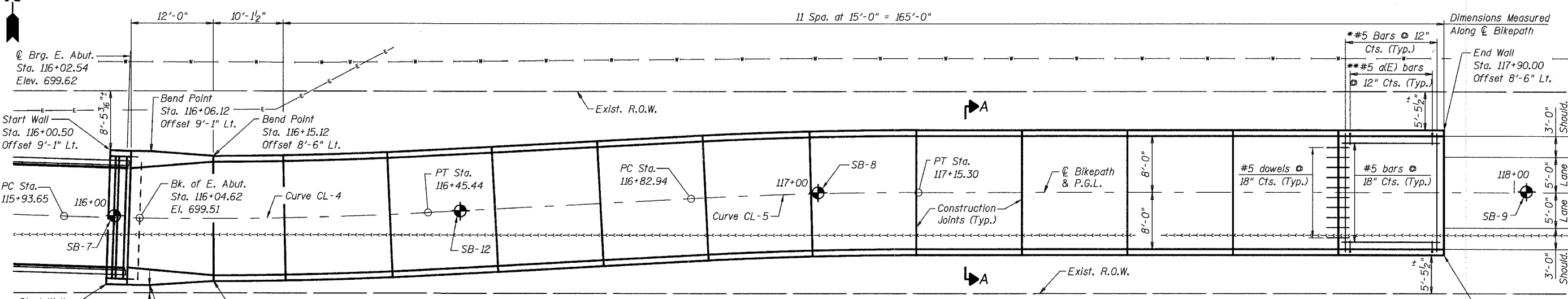
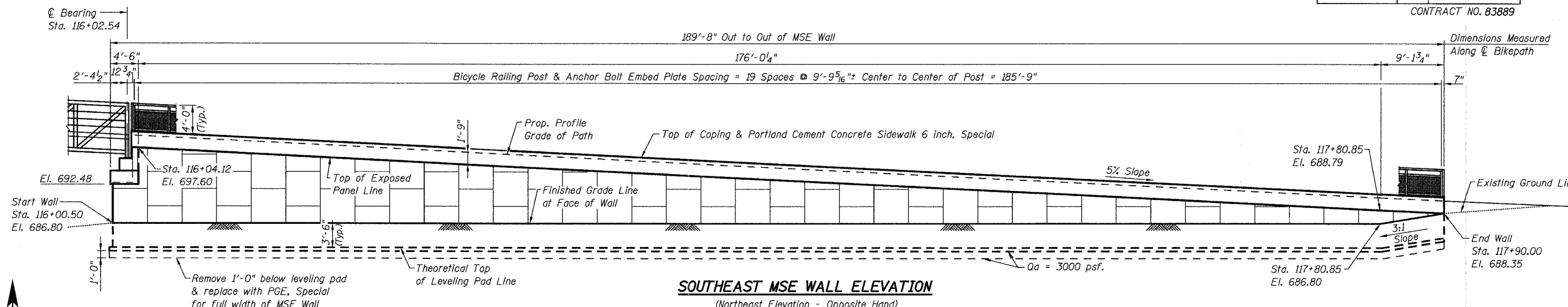


STATE OF ILLINOIS  
DEPARTMENT OF TRANSPORTATION

ROUTE NO.	SECTION	COUNTY	TOTAL SHEETS	SHEET NO.
F.A.P.	05-00130-00-BR	WILL	41	23
FED. ROAD DIST. NO. 7		ILLINOIS	FED. AID PROJECT	

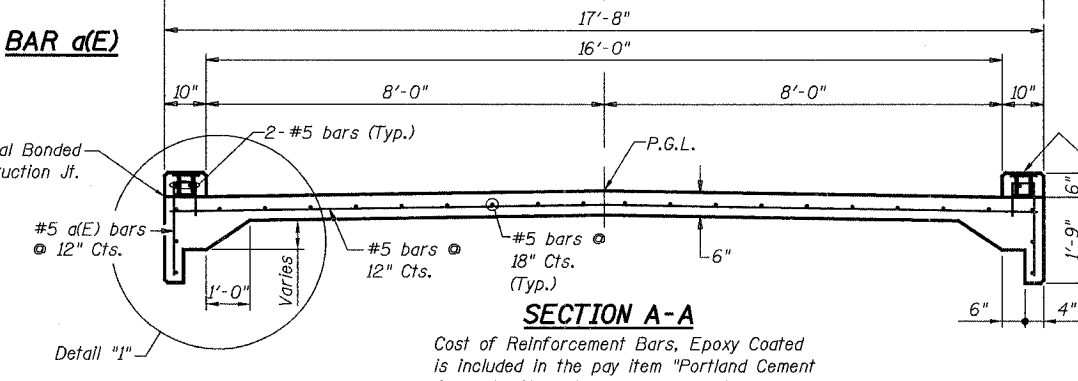
SHEET NO. 11  
OF 23 SHEETS

CONTRACT NO. 83889



**CURVE DATA**

Curve	P.I. Sta.	Delta	D	R	T	L	E	e	T.R.	S.E. Run	P.C. Sta.	P.T. Sta.
<b>CURVE CL-4</b>	116+19.56	4° 56' 45" (LT)	9° 32' 57"	600.00'	25.91'	51.79'	0.56'	N/A	N/A	N/A	115+93.65	116+45.44
<b>CURVE CL-5</b>	116+99.12	3° 05' 26" (RT)	9° 32' 57"	600.00'	16.19'	32.36'	0.22'	N/A	N/A	N/A	116+82.94	117+15.30



**EAST MSE WALL PLAN**

\* Typ. Btwn. Jts.  
\*\* Typ. Ea. Side & Btwn. Jts.

**BILL OF MATERIAL**

Pay Item	Unit	Quantity
Mechanically Stabilized Earth Retaining Wall	Sq. Ft.	3,813
Structure Excavation	Cu. Yd.	720
Portland Cement Concrete Sidewalk 6", Special	Sq. Ft.	3,310
Porous Granular Embankment, Special	Cu. Yd.	233
Concrete Sealer	Sq. Ft.	198

All reinforcement bars shall be epoxy coated.  
\* See Sheet 12 for limits of Concrete Sealer on MSE Wall

**Note:**  
Offsets shown are to outside edge of Curb which equals Face of Wall offset +4"

- NOTES:**
- See Sheet 12 for MSE Wall Details.
  - See Sheet 14 for Railing Details.
  - See Sheet 12 for Detail 1.
  - For Architectural treatment of MSE Wall See "Architectural Details" drawing.
  - See Plan at Abutments for Curb Plan & Details.

REVISIONS	
NAME	DATE

ILLINOIS DEPARTMENT OF TRANSPORTATION  
**EAST MSE WALL  
PLAN AND ELEVATION**  
ROUTE 59 PEDESTRIAN BRIDGE  
CITY OF NAPERVILLE, WILL COUNTY  
F.A.P. RTE. STATION 113+02.46  
SCALE: N.T.S.  
SECTION: 05-00130-00-BR  
STRUCTURE NO. 099-6002  
DATE: 12/8/2006

**URS**  
100 South Wacker Drive,  
Suite 500  
Chicago, IL 60606  
(312) 939-1000

C:\napeville\_25365506\_pedbridge\bridge\pre-final\plans\drawings\1-east mse wall elevation 12/8/2006 1:36:45 PM

DESIGNED MDS  
CHECKED JPB  
DRAWN MDS  
CHECKED JPB