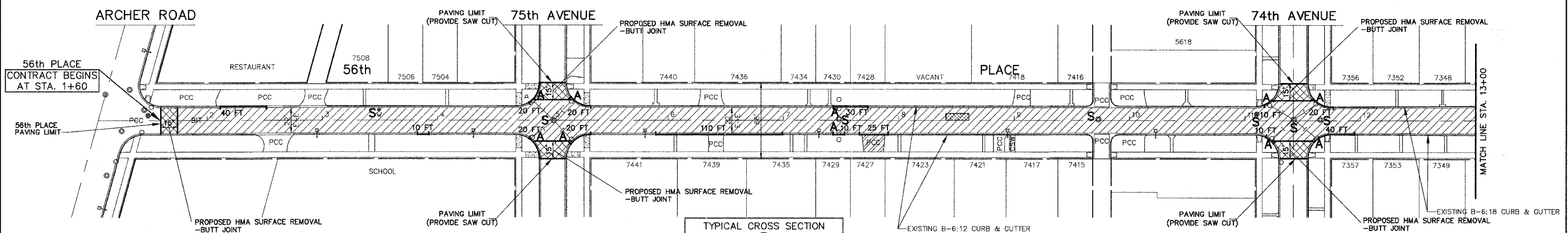
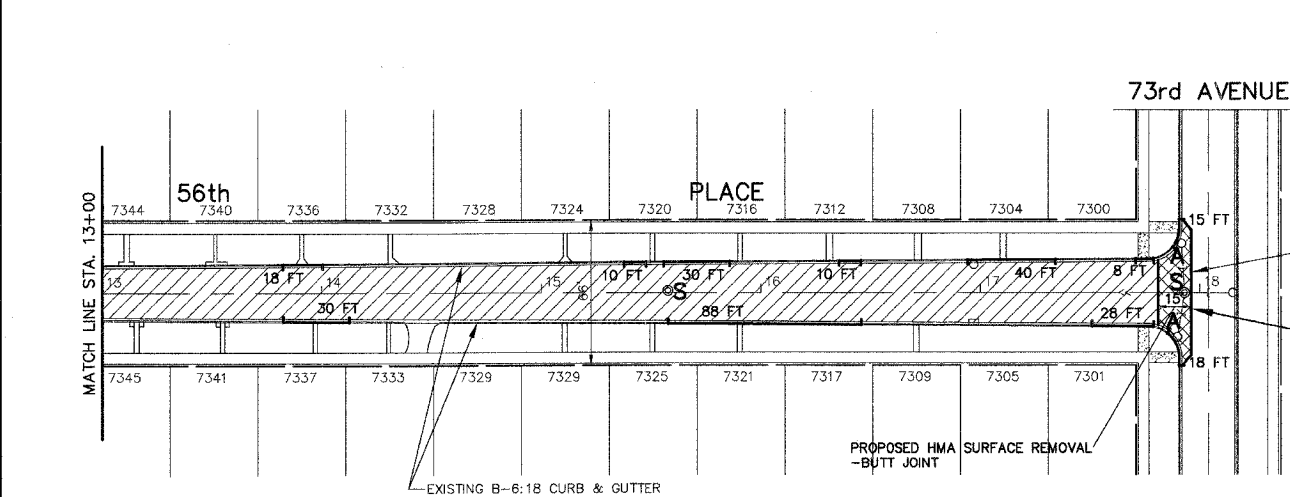


FAU RTE	SECTION	COUNTY	TOTAL SHEETS	SHEET NO.
VARIOUS	05-00059-00-RS	COOK	23	12

CONTRACT NO. 83903

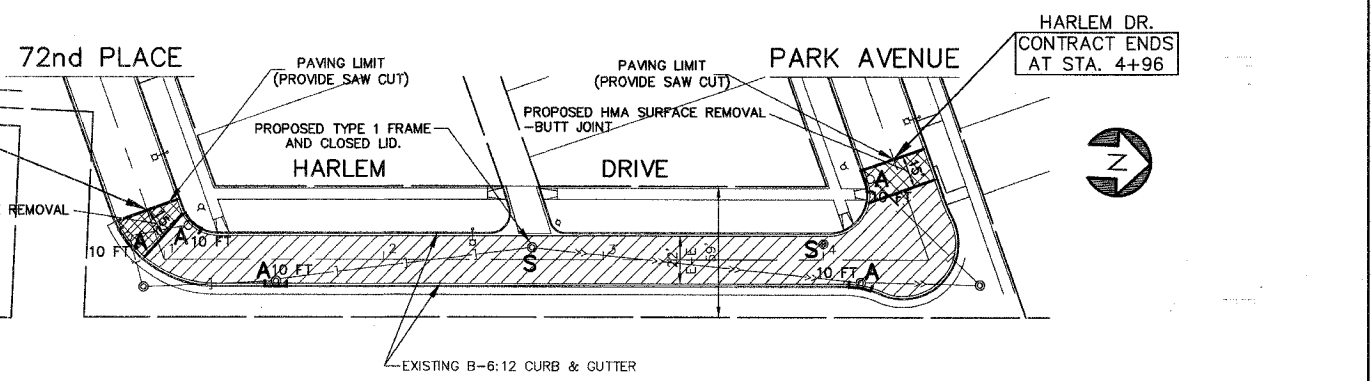


TYPICAL CROSS SECTION  
 ②  
 APPLIES FOR  
 56th PLACE and HARLEM AVE.



HARLEM DRIVE  
 CONTRACT BEGINS  
 AT STA. 0+60

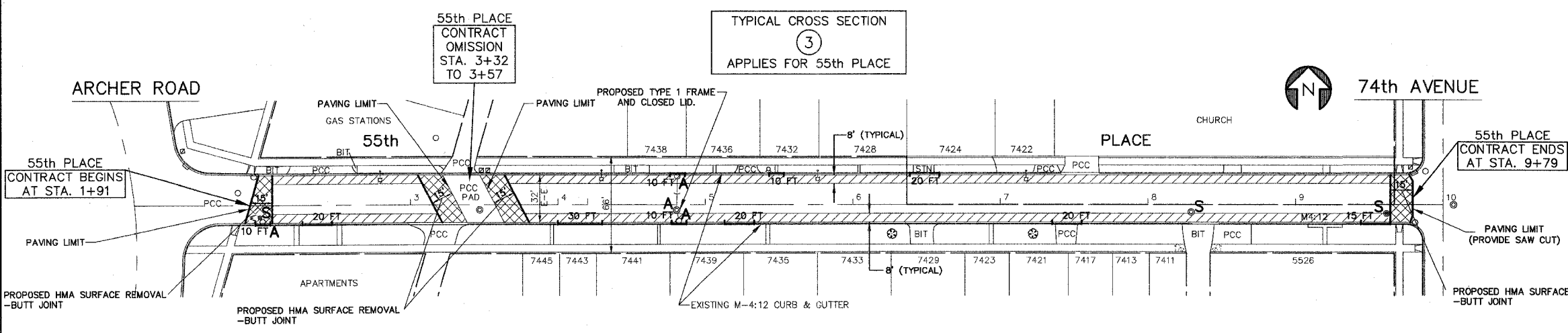
56th PLACE  
 CONTRACT ENDS  
 AT STA. 17+96



FOR TYPICAL CROSS SECTION OF NEW PAVEMENT WORK  
 SEE SHEET 3

NOTE: 1) ALL NEW DRAINAGE STRUCTURES SHALL BE INSTALLED WITH HALF TRAPS, WHICH SHALL BE INCLUDED IN THE DRAINAGE STRUCTURE PAY ITEM.  
 2) ALL EXISTING FRAMES AND LIDS THAT ARE TO BE REPLACED (AS DIRECTED BY THE ENGINEER) SHALL BE SALVAGED TO THE CONTRACTOR.  
 3) ALL SAW CUTS SHALL BE CONSIDERED INCIDENTAL TO THE CONTRACT

- LEGEND**
- DENOTES HOT-MIX ASPHALT SURFACE REMOVAL-BUTT JOINT, (15' WIDTH)
  - DENOTES DRIVEWAY PAVEMENT REMOVAL, 3" AND INCIDENTAL HOT-MIX ASPHALT SURFACING, 3"
  - DENOTES CLASS D PATCHES, TYPE I-IV, 4" (FOR AGGREGATE BASE STREETS) -AS DIRECTED BY THE ENGINEER
  - DENOTES CLASS D PATCHES, TYPE I-IV, 8" (FOR CONCRETE BASE STREETS) -AS DIRECTED BY THE ENGINEER
  - DENOTES PAVEMENT REMOVAL AND P.C. CONCRETE PAVEMENT REPLACEMENT, 8"
  - DENOTES HOT-MIX ASPHALT SURFACE REMOVAL (SEE SHEET 3 FOR SCOPE OF WORK)
  - DENOTES P.C. CONCRETE SIDEWALK, 5" REMOVAL AND SIDEWALK REMOVAL, WITH DETECTABLE WARNING STRIP WHERE APPLICABLE
  - "A" DENOTES EXISTING VALVE VAULTS, VALVE BOXES, CATCH BASINS AND MANHOLES TO BE CLEANED, GROUTED, AND ADJUSTED TO GRADE WITH NEW ADJUSTING RINGS. (ALL TOP BANDS OF FALLEN COMMON OR CONCRETE BRICK TO BE REPLACED WITH PRECAST CONCRETE ADJUSTING RINGS)
  - "S" DENOTES EXISTING STRUCTURES TO BE ADJUSTED (SPECIAL)
  - DENOTES COMBINATION CONCRETE CURB & GUTTER REMOVAL AND REPLACEMENT (DEPRESS AT SIDEWALK)
  - DENOTES EXISTING SIDEWALK RAMP TO REMAIN



TYPICAL CROSS SECTION  
 ③  
 APPLIES FOR 55th PLACE

55th PLACE  
 CONTRACT ENDS  
 AT STA. 9+79

**IMPORTANT!**  
 FULL SIZE PLANS HAVE BEEN PREPARED USING STANDARD ENGINEERING SCALES. REDUCED SIZED PLANS WILL NOT CONFORM TO STANDARD SCALES INDICATED IN TITLE BLOCK.

**Frank Novotny & Associates, Inc.**  
 Civil Engineers/Municipal Consultants  
 825 Midway Drive • Willowbrook, IL • 60527 • Telephone: (630) 887-8640 • Fax: (630) 887-0132  
 Illinois Professional Design Firm No. 184-000928

PROJECT  
**VILLAGE OF SUMMIT, ILLINOIS**  
**STREET RESURFACING**  
 MFT SECTION NO. 05-00059-00-RS

REVISIONS			
NO.	BY	DATE	DESCRIPTION
1	JLC	1/3/07	I.D.O.T. REVIEW

**PLAN:**  
 56th PL. - ARCHER RD. TO 73rd AVE.  
 HARLEM DR. - 72nd PL. TO PARK AVE.  
 55th PL. - ARCHER RD. TO 74th AVE.

PROJECT NO. 05442	SCALE 1"=40'	SHEET 12 OF 23 SHEETS
DRAWN/DESIGNED JFP/JLC	DATE OCT., 2006	
CHECKED/APPROVED JLC	FIELD BOOK NO.	
	FILE	