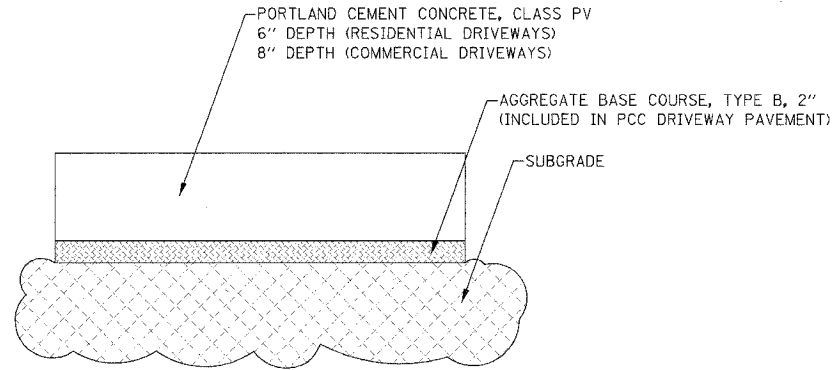


F.A.U. RTE.	SECTION	COUNTY	TOTAL SHEETS	SHEET NO.
2638 00-00139-00-RS	DUPAGE		68	36
STA. 9+00.00		TO STA. 124+00.00		
FED. ROAD DIST. NO.		ILLINOIS FED. AID PROJECT		
PROJECT NO.: M-8003 (663)				



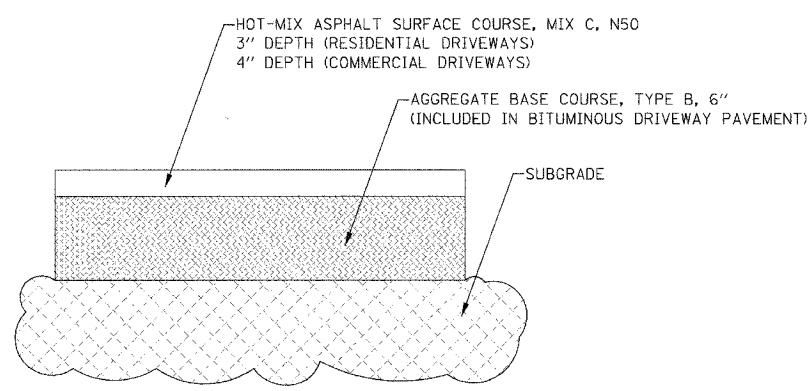
PORTLAND CEMENT CONCRETE DRIVEWAY PAVEMENT SECTION

REFER TO ROADWAY PLANS FOR PCC DRIVEWAY LOCATIONS.

RESIDENTIAL DRIVEWAYS PAID FOR AS: PORTLAND CEMENT CONCRETE DRIVEWAY PAVEMENT, 6 INCH, SPECIAL

COMMERCIAL DRIVEWAYS PAID FOR AS: OR PORTLAND CEMENT CONCRETE DRIVEWAY PAVEMENT, 8 INCH, SPECIAL

NOTE: THICKNESS OF SIDEWALK TO BE INCREASED TO 6" OR 8" AS NECESSARY THROUGH DRIVEWAY APRONS PER VILLAGE STANDARD. (INCLUDED WITH PCC SIDEWALK, 5 INCH, SPECIAL).



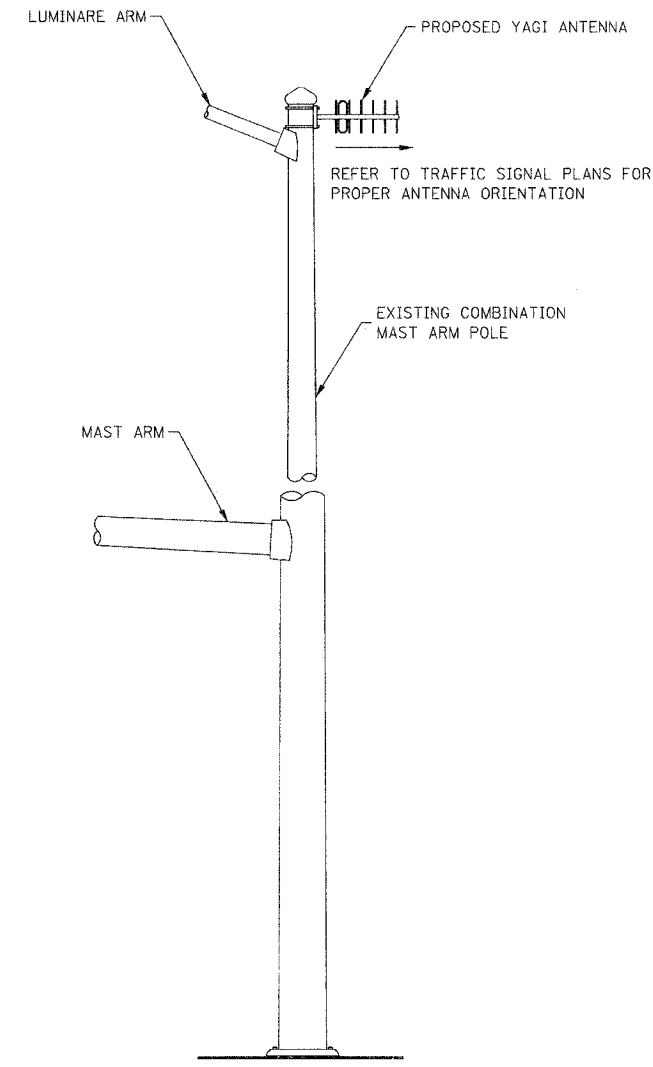
BITUMINOUS DRIVEWAY PAVEMENT SECTION

REFER TO ROADWAY PLANS FOR BITUMINOUS DRIVEWAY LOCATIONS.

RESIDENTIAL DRIVEWAYS PAID FOR AS: BITUMINOUS DRIVEWAY PAVEMENT, 9"

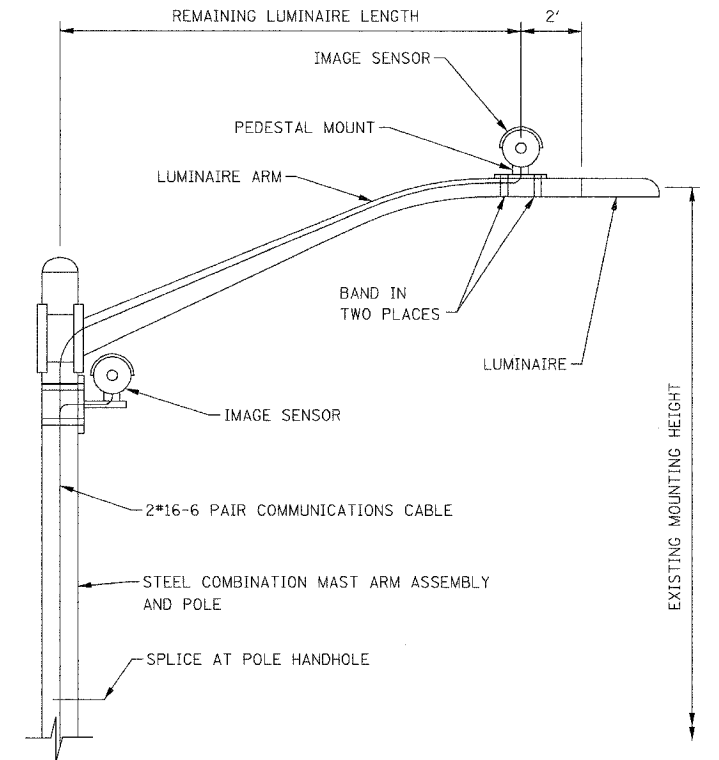
COMMERCIAL DRIVEWAYS PAID FOR AS: BITUMINOUS DRIVEWAY PAVEMENT, 10"

NOTE: THICKNESS OF SIDEWALK TO BE INCREASED TO 6" OR 8" AS NECESSARY THROUGH DRIVEWAY APRONS PER VILLAGE STANDARD. (INCLUDED WITH PCC SIDEWALK, 5 INCH, SPECIAL).



NOTE:
ANTENNA SHALL BE INSTALLED AT THE TOP OF THE COMBINATION MAST ARM POLE

ANTENNA MOUNTING DETAIL (NOT TO SCALE)



- NOTES:
1. AIM IMAGE SENSOR TOWARD DIRECTION OF TRAFFIC TO BE DETECTED.
 2. MOUNT IMAGE SENSOR AIMING DOWN AT 15° ANGLE FROM HORIZON.
 3. AIMING SENSOR AT DIRECT SUNLIGHT WILL CAUSE PERMANENT DAMAGE.

IMAGE SENSOR MOUNTING DETAIL DUAL CONFIGURATION (NOT TO SCALE)

PLOT DATE = 1/24/2007 FILE NAME = H:\Lombard\41489 Westmore Meyers Resurfacing\CAD\detail.dgn

REVISIONS		ILLINOIS DEPARTMENT OF TRANSPORTATION
NAME	DATE	
		VILLAGE OF LOMBARD WESTMORE /MEYERS RESURFACING PROJECT MISCELLANEOUS DETAILS SCALE: NTS DATE: 01/31/07
		DRAWN BY: JRH CHECKED BY: JMT