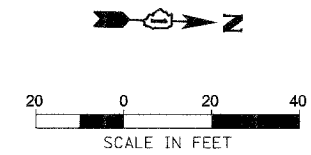
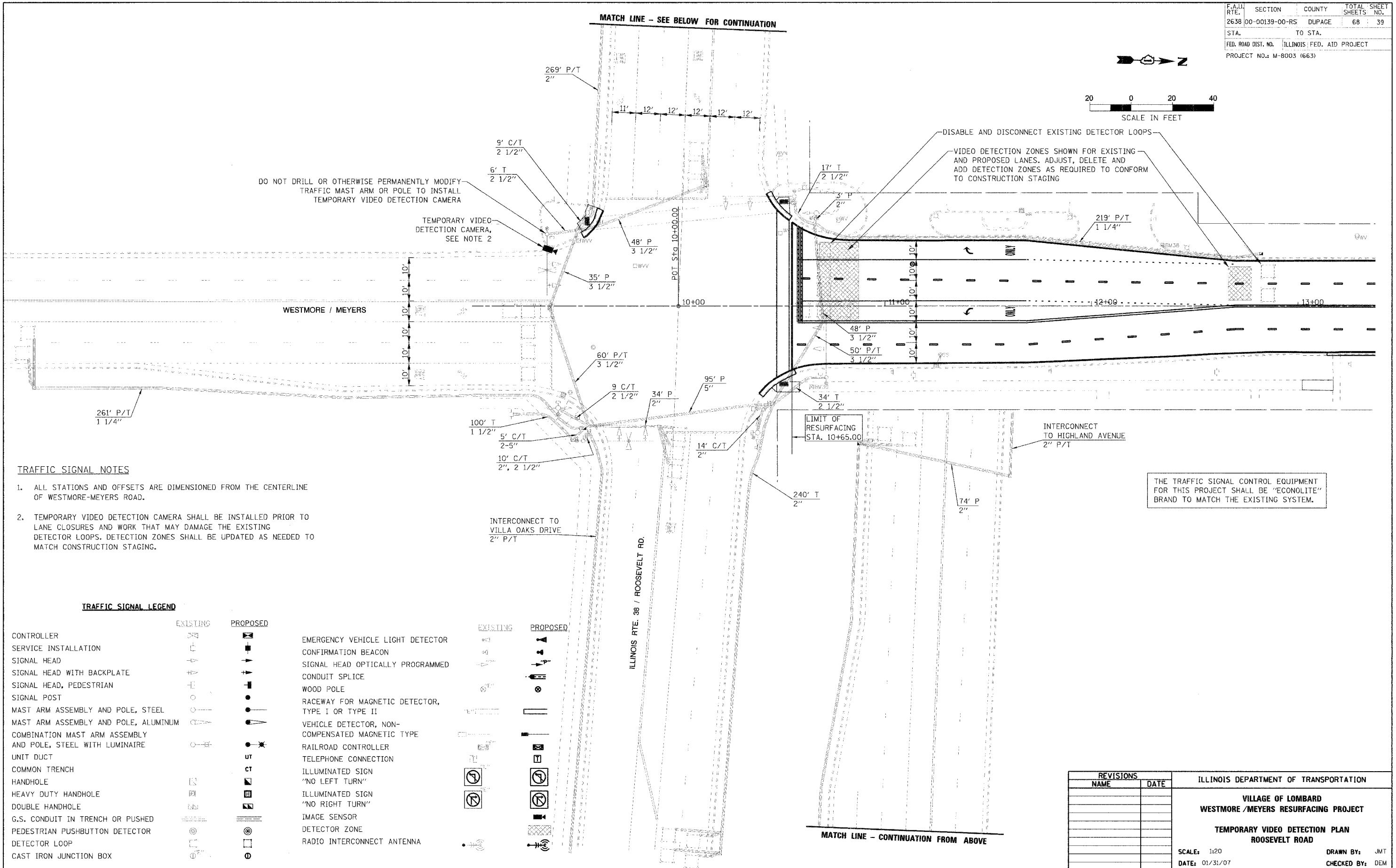


F.A.U. RTE.	SECTION	COUNTY	TOTAL SHEETS	SHEET NO.
2638	00-00139-00-RS	DUPAGE	68	39
STA.	TO STA.			
	ILLINOIS FED. AID PROJECT			
PROJECT NO.: M-8003 (663)				



MATCH LINE - SEE BELOW FOR CONTINUATION



DO NOT DRILL OR OTHERWISE PERMANENTLY MODIFY TRAFFIC MAST ARM OR POLE TO INSTALL TEMPORARY VIDEO DETECTION CAMERA

TEMPORARY VIDEO DETECTION CAMERA, SEE NOTE 2

DISABLE AND DISCONNECT EXISTING DETECTOR LOOPS

VIDEO DETECTION ZONES SHOWN FOR EXISTING AND PROPOSED LANES. ADJUST, DELETE AND ADD DETECTION ZONES AS REQUIRED TO CONFORM TO CONSTRUCTION STAGING

TRAFFIC SIGNAL NOTES

1. ALL STATIONS AND OFFSETS ARE DIMENSIONED FROM THE CENTERLINE OF WESTMORE-MEYERS ROAD.
2. TEMPORARY VIDEO DETECTION CAMERA SHALL BE INSTALLED PRIOR TO LANE CLOSURES AND WORK THAT MAY DAMAGE THE EXISTING DETECTOR LOOPS. DETECTION ZONES SHALL BE UPDATED AS NEEDED TO MATCH CONSTRUCTION STAGING.

THE TRAFFIC SIGNAL CONTROL EQUIPMENT FOR THIS PROJECT SHALL BE "ECONOLITE" BRAND TO MATCH THE EXISTING SYSTEM.

TRAFFIC SIGNAL LEGEND

	EXISTING	PROPOSED		EXISTING	PROPOSED
CONTROLLER			EMERGENCY VEHICLE LIGHT DETECTOR		
SERVICE INSTALLATION			CONFIRMATION BEACON		
SIGNAL HEAD			SIGNAL HEAD OPTICALLY PROGRAMMED		
SIGNAL HEAD WITH BACKPLATE			CONDUIT SPLICE		
SIGNAL HEAD, PEDESTRIAN			WOOD POLE		
SIGNAL POST			RACEWAY FOR MAGNETIC DETECTOR, TYPE I OR TYPE II		
MAST ARM ASSEMBLY AND POLE, STEEL			VEHICLE DETECTOR, NON-COMPENSATED MAGNETIC TYPE		
MAST ARM ASSEMBLY AND POLE, ALUMINUM			RAILROAD CONTROLLER		
COMBINATION MAST ARM ASSEMBLY AND POLE, STEEL WITH LUMINAIRE			TELEPHONE CONNECTION		
UNIT DUCT			ILLUMINATED SIGN "NO LEFT TURN"		
COMMON TRENCH			ILLUMINATED SIGN "NO RIGHT TURN"		
HANDHOLE			IMAGE SENSOR		
HEAVY DUTY HANDHOLE			DETECTOR ZONE		
DOUBLE HANDHOLE			RADIO INTERCONNECT ANTENNA		
G.S. CONDUIT IN TRENCH OR PUSHED					
PEDESTRIAN PUSHBUTTON DETECTOR					
DETECTOR LOOP					
CAST IRON JUNCTION BOX					

REVISIONS		ILLINOIS DEPARTMENT OF TRANSPORTATION
NAME	DATE	
		VILLAGE OF LOMBARD WESTMORE /MEYERS RESURFACING PROJECT TEMPORARY VIDEO DETECTION PLAN ROOSEVELT ROAD SCALE: 1:20 DATE: 01/31/07 DRAWN BY: JMT CHECKED BY: DEM

PLOT DATE = 1/27/2007
 FILE NAME = H:\Lombard\414851 Westmore Meyers Resurfacing\CAD\temp\tbl1.TMP.dgn

MATCH LINE - CONTINUATION FROM ABOVE