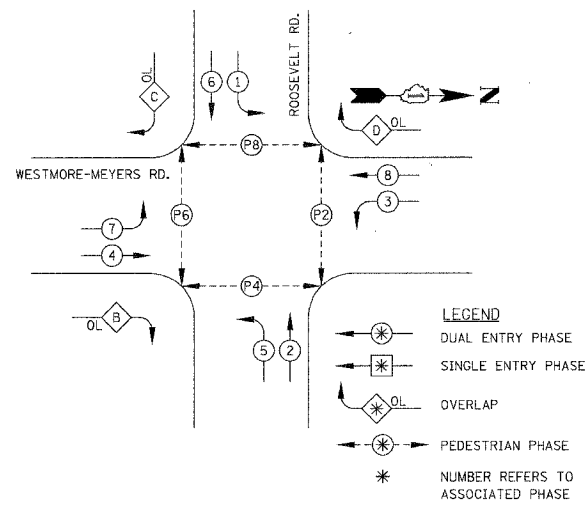
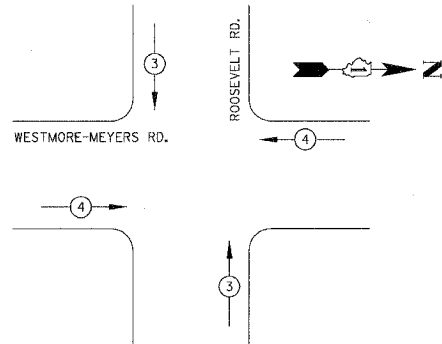


F.A.U. RTE.	SECTION	COUNTY	TOTAL SHEETS	SHEET NO.
2638	00-00139-00-RS	DUPAGE	68	40
STA.		TO STA.		
FED. ROAD DIST. NO.		ILLINOIS FED. AID PROJECT		
PROJECT NO.: M-8003 (663)				

PHASE DESIGNATION DIAGRAM/CONTROLLER SEQUENCE

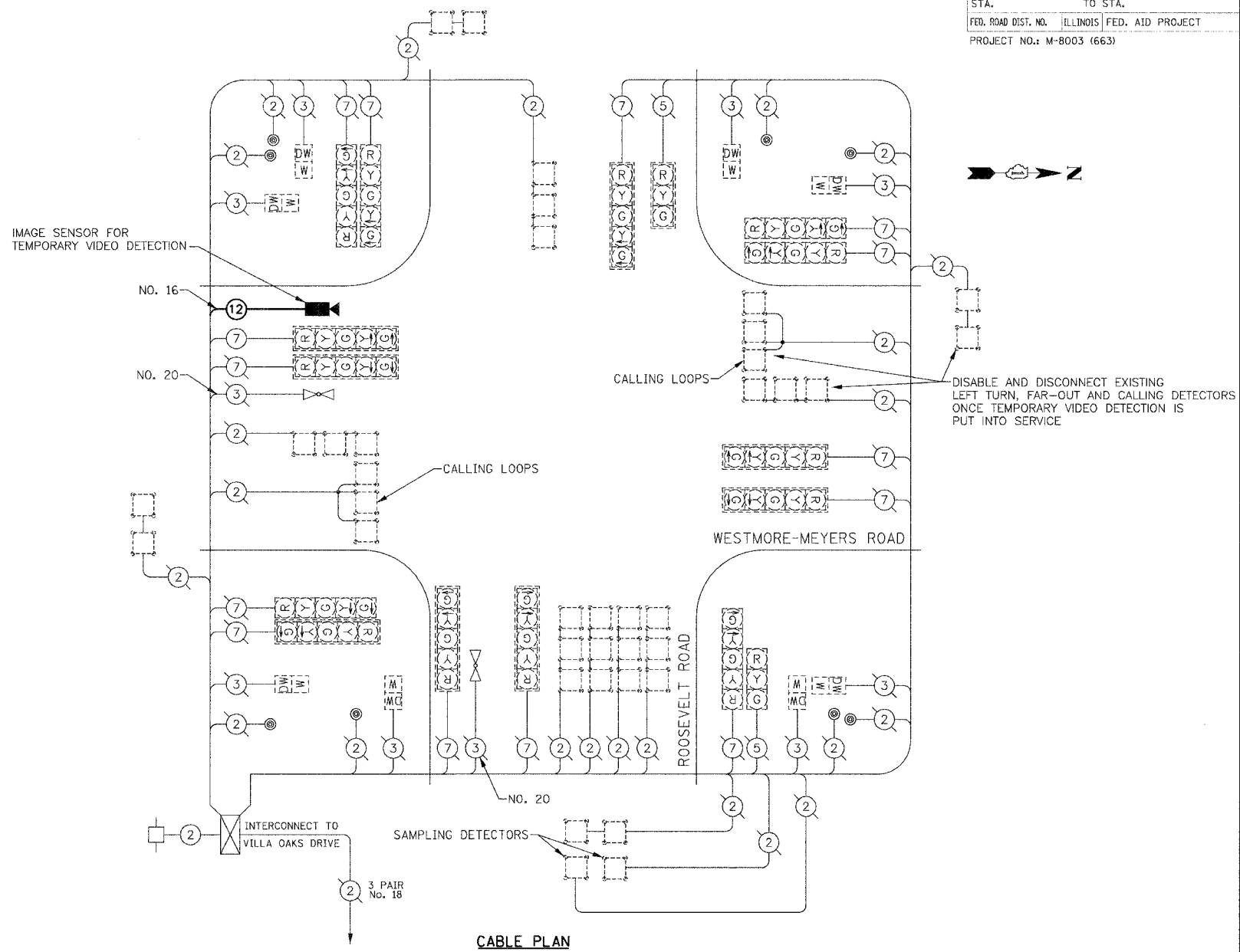


EMERGENCY VEHICLE PREEMPTION SEQUENCE



PROPOSED EMERGENCY VEHICLE PREEMPTOR		
EMERGENCY VEHICLE PREEMPTOR	3	4
MOVEMENT	↓	←

- | EXISTING | PROPOSED | |
|----------|----------|---|
| | | 8" (200mm) TRAFFIC SIGNAL SECTION |
| | | 12" (300mm) TRAFFIC SIGNAL SECTION |
| | | 12" (300mm) PEDESTRIAN SIGNAL SECTION |
| | | LEFT TURN GREEN |
| | | LEFT TURN YELLOW |
| | | 12" (300mm) PEDESTRIAN SIGNAL SECTION |
| | | |
| | | CONTROLLER |
| | | SERVICE INSTALLATION |
| | | TELEPHONE CONNECTION |
| | | DETECTOR LOOP |
| | | EMERGENCY VEHICLE LIGHT DETECTOR |
| | | CONFIRMATION BEACON |
| | | PEDESTRIAN PUSHBUTTON DETECTOR |
| | | 2 DENOTES NUMBER OF CONDUCTORS |
| | | 1 ALL CABLE NO. 14 EXCEPT AS INDICATED. |
| | | 24 FIBER OPTIC CABLE IN CONDUIT |
| | | NO. 62.5/125 2-MM12F SM12F |
| | | RAILROAD CONTROL CABINET |
| | | SIGNAL FACE WITH BACKPLATE |
| | | "P" INDICATES PROGRAMMED HEAD. |
| | | ILLUMINATED SIGN |
| | | "NO LEFT TURN" |
| | | ILLUMINATED SIGN |
| | | "NO RIGHT TURN" |
| | | RADIO INTERCONNECT ANTENNA |
| | | IMAGE SENSOR |
| | | COAXIAL CABLE |



CABLE PLAN

SCHEDULE OF QUANTITIES

DESCRIPTION	UNIT	QTY
TEMPORARY VIDEO DETECTION	L.S.	1
MAINTENANCE OF EXISTING TRAFFIC SIGNAL INSTALLATION	EACH	1
MODIFY EXISTING CONTROLLER	EACH	1
REMOVE EXISTING TRAFFIC SIGNAL EQUIPMENT	EACH	1

- NOTES:**
- EXISTING MASTER CONTROLLER IS LOCATED AT THIS INTERSECTION IN THE SAME CABINET AS THE LOCAL CONTROLLER.
 - PROGRAM TEMPORARY VIDEO DETECTION ZONES TO CONFORM WITH EACH CONSTRUCTION STAGE MAINTENANCE OF TRAFFIC.
 - DISABLE AND BAG SIGNAL HEADS AS REQUIRED FOR TRAFFIC MOVEMENTS NOT AVAILABLE DURING EACH STAGE OF CONSTRUCTION.

- REMOVAL NOTE:**
- THE FOLLOWING TRAFFIC SIGNAL EQUIPMENT SHALL BE REMOVED BY THE CONTRACTOR AND SHALL REMAIN THE PROPERTY OF AGENCY LISTED BELOW. THE CONTRACTOR SHALL SAFELY STORE AND ARRANGE FOR PICK UP OF ALL EQUIPMENT TO BE RETURNED TO THE LISTED AGENCY AS PER THE TRAFFIC SIGNAL SPECIFICATIONS.
- AGENCY: VILLAGE OF LOMBARD, ILLINOIS
- LIGHT DETECTORS
 - LIGHT DETECTOR AMPLIFIER

TRAFFIC SIGNAL INSTALLATION ELECTRICAL SERVICE REQUIREMENTS				TOTAL WATTAGE	
TYPE	NO. LAMPS	WATTAGE INCAND.	WATTAGE LED	% OPERATION	
SIGNAL (RED)	16	135		0.50	1080.00
(YELLOW)	16	135		0.25	540.00
(GREEN)	16	135		0.25	540.00
ARROW	28	135		0.10	378.00
PED. SIGNAL	8		25	1.00	200.00
CONTROLLER	1	100		1.00	100.00
DET. CAMERA	1	25		1.00	25.00
FLASHER				0.50	-
ENERGY COSTS TO:				TOTAL =	2863.00

STATE OF ILLINOIS
 201 WEST CENTER COURT
 SCHAUMBURG, ILLINOIS 60195-1096

ENERGY SUPPLY: CONTACT: _____
 PHONE: _____
 COMPANY: COMMONWEALTH EDISON

FOUNDATION (DEPTH)	FT. (m)	CABLE SLACK	FT. (m)	VERTICAL	FT. (m)
TYPE A - POST	4 (1.2)	HANDHOLE	6.5 (2.0)	ALL FOUNDATIONS	3.5 (1.0)
D - CONTROLLER	4 (1.2)	DOUBLE HANDHOLE	13 (4.0)	MAST ARM (L) POLE	20'±L-2'±
C - M. ARM POLE		SIGNAL POST	2 (1.0)	(6m±L-0.6m)±	
24" (600mm)	10 (3.0)	CONTROLLER CAB.	1 (0.5)	BRACKET MOUNTED	13 (4.0)
30" (750mm)	15 (4.6)	FIBER OPTIC	13 (4.0)	PED. PUSHBUTTON	4 (1.2)
		ELECTRIC SERVICE	1 (0.5)	ELECTRIC SERVICE	13.5 (4.1)
		GROUND CABLE	1 (0.5)	SERVICE TO GROUND	13.5 (4.1)
				POST MOUNTED	6 (1.8)

REVISIONS		ILLINOIS DEPARTMENT OF TRANSPORTATION	
NAME	DATE		
		VILLAGE OF LOMBARD WESTMORE /MEYERS RESURFACING PROJECT TEMPORARY VIDEO DETECTION TRAFFIC SIGNAL CABLE PLAN, SCHEDULE OF QUANTITIES AND SEQUENCE OF OPERATIONS ROOSEVELT ROAD	
		SCALE: N.T.S.	DRAWN BY: JMT
		DATE: 01/31/07	CHECKED BY: DEM

PLOT DATE = 2/21/2007
 FILE NAME = H:\Lombard\41895 Westmore Meyers Resurfacing\CAD\tschah081TEMP.dgn