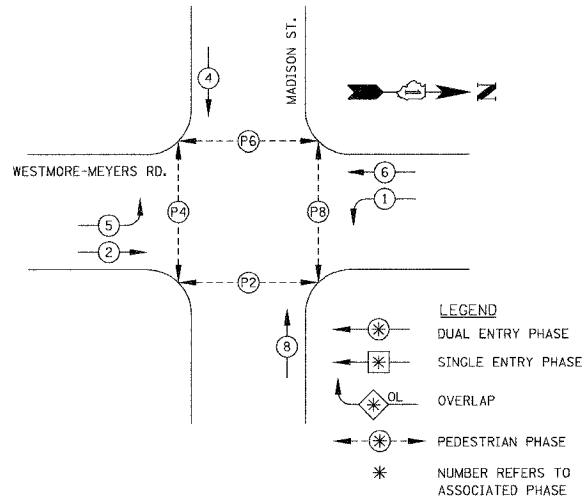
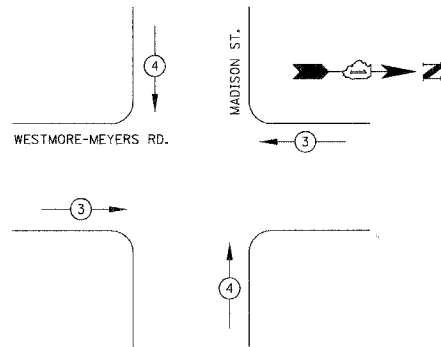


F.A.U. RTE.	SECTION	COUNTY	TOTAL SHEETS	SHEET NO.
2638 00-00139-00-RS	DUPAGE	ILLINOIS	68	53
STA.	TO STA.			
FED. ROAD DIST. NO.	ILLINOIS FED. AID PROJECT			
PROJECT NO.: M-8003 (663)				

**PHASE DESIGNATION DIAGRAM/CONTROLLER SEQUENCE**



**EMERGENCY VEHICLE PREEMPTION SEQUENCE**



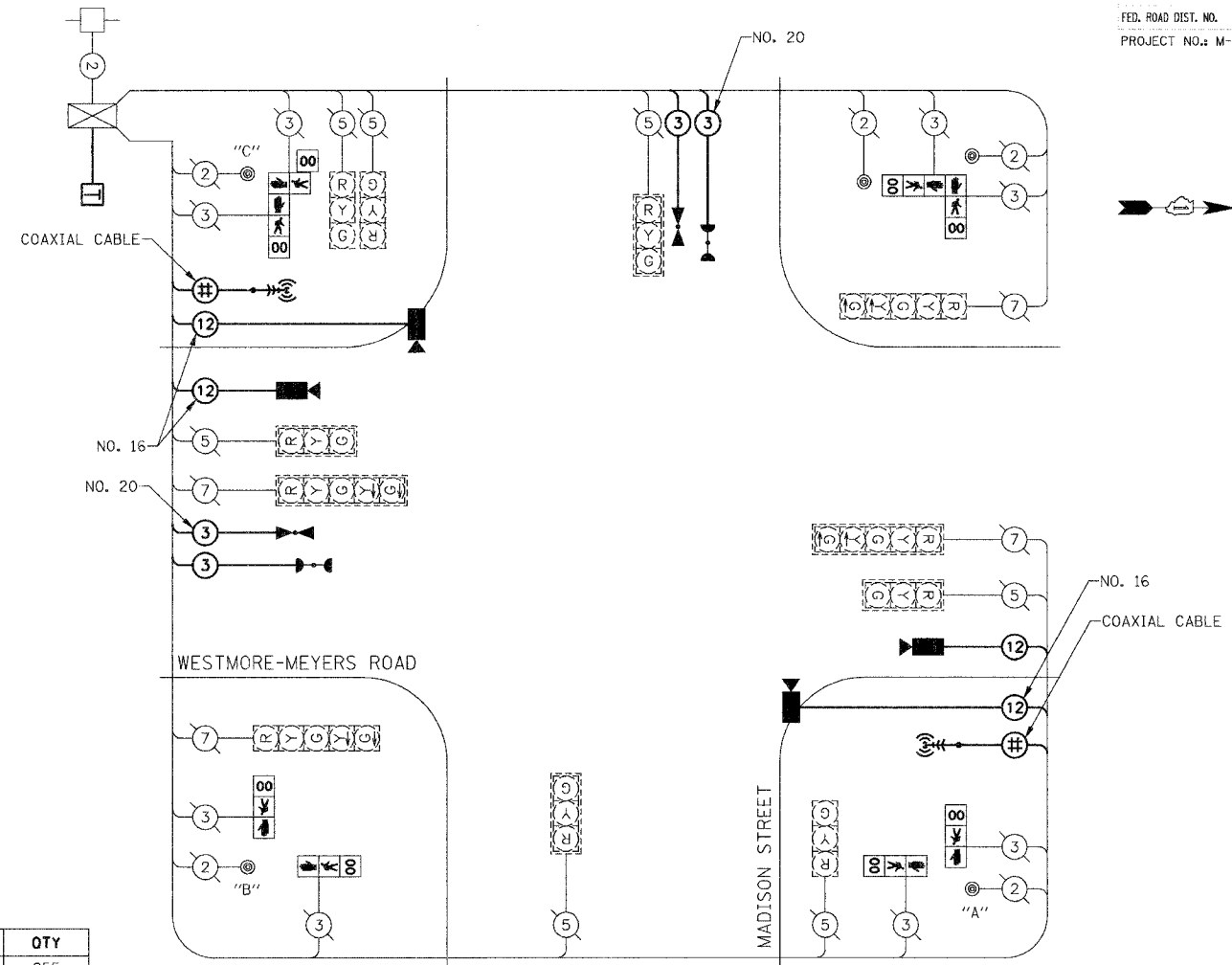
EMERGENCY VEHICLE PREEMPTOR	3	4
MOVEMENT	← →	↑ ↓

- | EXISTING | PROPOSED |   |
|----------|----------|---|
| (C)      | (C)      | 8" (200mm) TRAFFIC SIGNAL SECTION   |
| (R)      | (R)      | 12" (300mm) TRAFFIC SIGNAL SECTION  |
| (W)      | (W)      | 12" (300mm) PEDESTRIAN SIGNAL SECTION   |
| (G)      | (C)      | LEFT TURN GREEN   |
| (Y)      | (Y)      | LEFT TURN YELLOW  |
| (00)     | (00)     | 12" (300mm) PEDESTRIAN SIGNAL SECTION   |
| (#)      | (#)      | CONTROLLER  |
| (#)      | (#)      | SERVICE INSTALLATION  |
| (#)      | (#)      | TELEPHONE CONNECTION  |
| (#)      | (#)      | DETECTOR LOOP   |
| (#)      | (#)      | EMERGENCY VEHICLE LIGHT DETECTOR  |
| (#)      | (#)      | CONFIRMATION BEACON   |
| (#)      | (#)      | PEDESTRIAN PUSHBUTTON DETECTOR  |
| (2)      | (2)      | DENOTES NUMBER OF CONDUCTORS. ALL CABLE NO. 14 EXCEPT AS INDICATED. ALL LOOP DETECTOR CABLE TO BE SHIELDED. |
| (1)      | (1)      | GROUND CABLE IN CONDUIT, NO. 6 SOLID COPPER (GREEN)   |
| (24)     | (24)     | FIBER OPTIC CABLE IN CONDUIT NO. 62.5/125 2-MM12F SM12F   |
| (R)      | (R)      | RAILROAD CONTROL CABINET  |
| (R)      | (R)      | SIGNAL FACE WITH BACKPLATE "P" INDICATES PROGRAMMED HEAD.   |
| (E)      | (E)      | ILLUMINATED SIGN "NO LEFT TURN"   |
| (E)      | (E)      | ILLUMINATED SIGN "NO RIGHT TURN"  |
| (#)      | (#)      | RADIO INTERCONNECT ANTENNA  |
| (#)      | (#)      | IMAGE SENSOR  |
| (#)      | (#)      | COAXIAL CABLE   |

**SCHEDULE OF QUANTITIES**

DESCRIPTION	UNIT	QTY
COAXIAL CABLE IN CONDUIT	FOOT	255
ANTENNA, YAGI, 900 MHZ	EACH	2
RADIO TRANSCIVER	EACH	1
MAINTENANCE OF EXISTING TRAFFIC SIGNAL INSTALLATION	EACH	1
MODIFY EXISTING CONTROLLER	EACH	1
PEDESTRIAN SIGNAL HEAD, L.E.D., 1-FACE, BRACKET MOUNTED WITH COUNTDOWN TIMER	EACH	8
REMOVE EXISTING TRAFFIC SIGNAL EQUIPMENT	EACH	1
CONDUIT, PUSHED, 4" DIA., GALVANIZED STEEL	FOOT	235
ELECTRIC CABLE IN CONDUIT, COMMUNICATION, NO. 16 6 PAIR	FOOT	550
ELECTRIC CABLE IN CONDUIT, NO. 20, 3/C, TWISTED, SHIELDED	FOOT	310
DRILL EXISTING HANDHOLE	EACH	6
ELECTRIC CABLE IN CONDUIT, SIGNAL, NO. 14 3C	FOOT	310
LIGHT DETECTOR	EACH	2
LIGHT DETECTOR AMPLIFIER	EACH	1
REMOVE EXISTING HANDHOLE	EACH	2
REMOVE ELECTRIC CABLE FROM CONDUIT	FOOT	1125
MASTER CONTROLLER	EACH	1
TELEPHONE SERVICE INSTALLATION	EACH	1
CONDUIT IN TRENCH, 2" DIA., GALVANIZED STEEL	FOOT	25
CONDUIT ATTACHED TO STRUCTURE, 2" DIA., GALVANIZED STEEL	FOOT	10
VIDEO DETECTION SYSTEM, COMPLETE INTERSECTION	EACH	1
VIDEO TRANSMISSION SYSTEM	EACH	1

FOUNDATION (DEPTH)	FT.	(m)	CABLE SLACK	FT.	(m)	VERTICAL	FT.	(m)
TYPE A - POST	4	(1.2)	HANDHOLE	6.5	(2.0)	ALL FOUNDATIONS	3.5	(1.0)
D - CONTROLLER	4	(1.2)	DOUBLE HANDHOLE	13	(4.0)	MAST ARM (L) POLE	20'	H=2' (6m+L-0.6m)=
C - M. ARM POLE			SIGNAL POST	2	(1.0)	BRACKET MOUNTED	13	(4.0)
24" (600mm)	10	(3.0)	CONTROLLER CAB.	1	(0.5)	PED. PUSHBUTTON	4	(1.2)
30" (750mm)	15	(4.6)	FIBER OPTIC	13	(4.0)	ELECTRIC SERVICE	13.5	(4.1)
			ELECTRIC SERVICE	1	(0.5)	SERVICE TO GROUND	13.5	(4.1)
			GROUND CABLE	1	(0.5)	POST MOUNTED	6	(1.8)



**CABLE PLAN**

**NOTE:**

PUSHBUTTON "A" SHALL PLACE A CALL TO PHASES 2 & 8.  
 PUSHBUTTON "B" SHALL PLACE A CALL TO PHASES 2 & 4.  
 PUSHBUTTON "C" SHALL PLACE A CALL TO PHASES 4 & 6.

TYPE	NO. LAMPS	WATTAGE INCAND.	LED	% OPERATION	TOTAL WATTAGE
SIGNAL (RED)	11	135		0.50	742.50
(YELLOW)	11	135		0.25	371.25
(GREEN)	11	135		0.25	371.25
ARROW	8	135		0.10	108.00
PED. SIGNAL	8		25	1.00	200.00
CONTROLLER	1	100		1.00	100.00
DET. CAMERA	4	25		1.00	100.00
MASTER CNTRLR	1	100		1.00	100.00
FLASHER				0.50	-

ENERGY COSTS TO: TOTAL = 2093.00

VILLAGE OF LOMBARD  
 255 E. WILSON AVENUE  
 LOMBARD, ILLINOIS 60148-3931

ENERGY SUPPLY: CONTACT: \_\_\_\_\_  
 PHONE: \_\_\_\_\_  
 COMPANY: COMMONWEALTH EDISON

REVISIONS		ILLINOIS DEPARTMENT OF TRANSPORTATION
NAME	DATE	
		<b>VILLAGE OF LOMBARD</b> <b>WESTMORE/MEYERS RESURFACING PROJECT</b> <b>TRAFFIC SIGNAL CABLE PLAN, SCHEDULE OF QUANTITIES AND SEQUENCE OF OPERATIONS</b> <b>MADISON STREET</b> SCALE: N.T.S. DATE: 01/31/07 DRAWN BY: JMT CHECKED BY: DEM