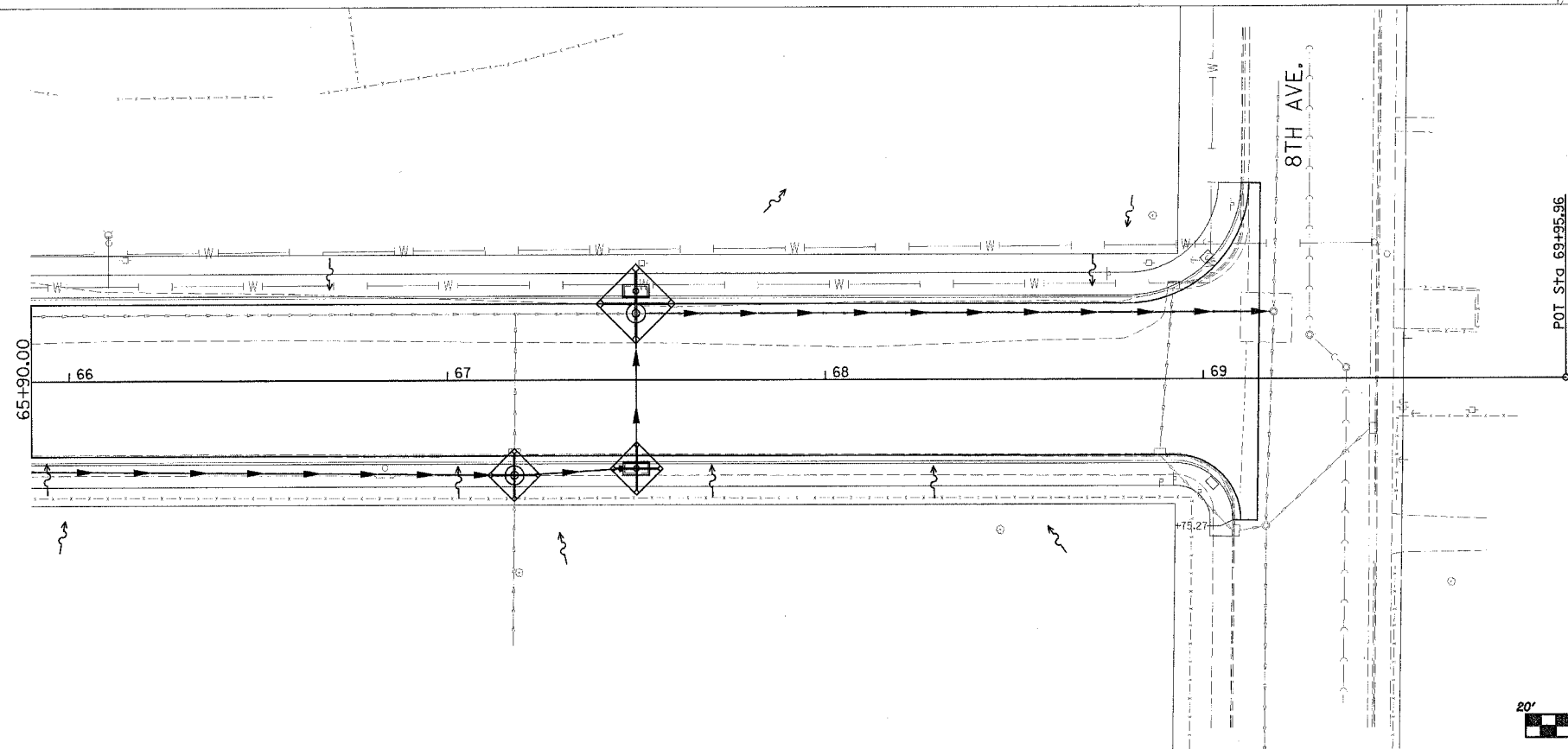
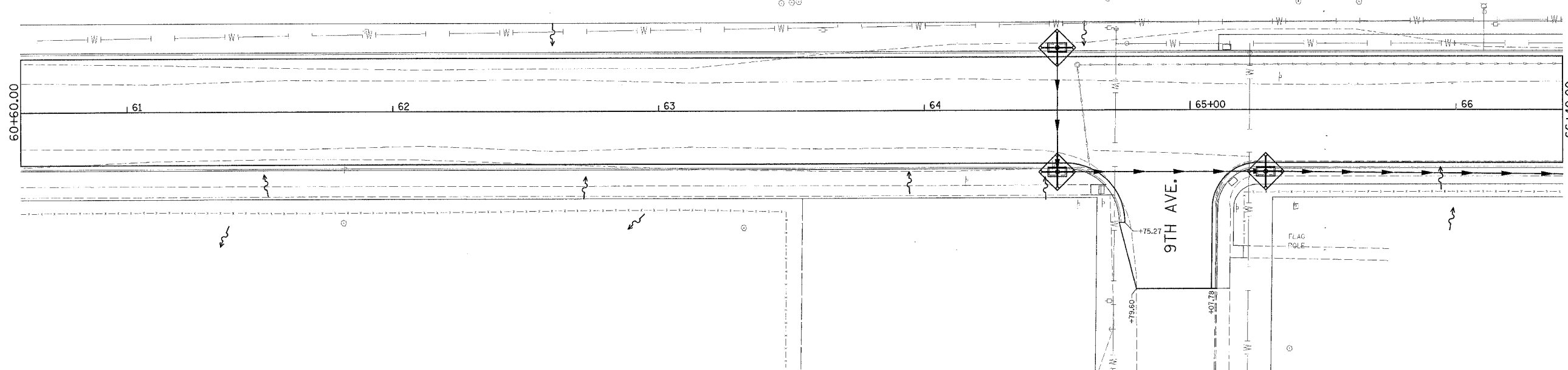






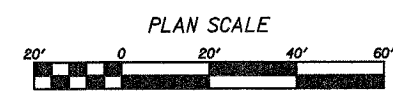
| F.A. RTE.             | SECTION        | COUNTY                    | TOTAL SHEETS | SHEET NO. |
|-----------------------|----------------|---------------------------|--------------|-----------|
| 5555                  | 06-00127-00-FP | WHITESIDE                 | 24           | 14        |
| STA. 60+60            |                | TO STA. 69+44.64          |              |           |
| FED. ROAD DIST. NO. 1 |                | ILLINOIS FED. AID PROJECT |              |           |



LEGEND

-  PROPOSED STORM SEWER
-  INLET PROTECTION
-  PERIMETER EROSION BARRIER
-  DRAINAGE FLOW

NOTE: ALL ITEMS SHALL BE CONSTRUCTED AS SHOWN ON STANDARD 280001 AND AS DIRECTED BY THE ENGINEER. MAINTENANCE AND CLEANING OF THE EROSION CONTROL ITEMS SHALL BE INCLUDED IN THE RESPECTIVE EROSION CONTROL PAY ITEM.



## STORM WATER POLLUTION PREVENTION PLAN