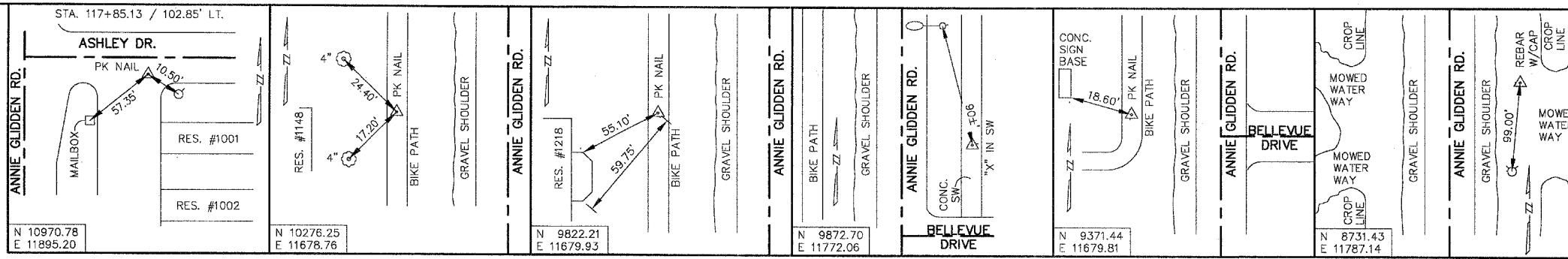


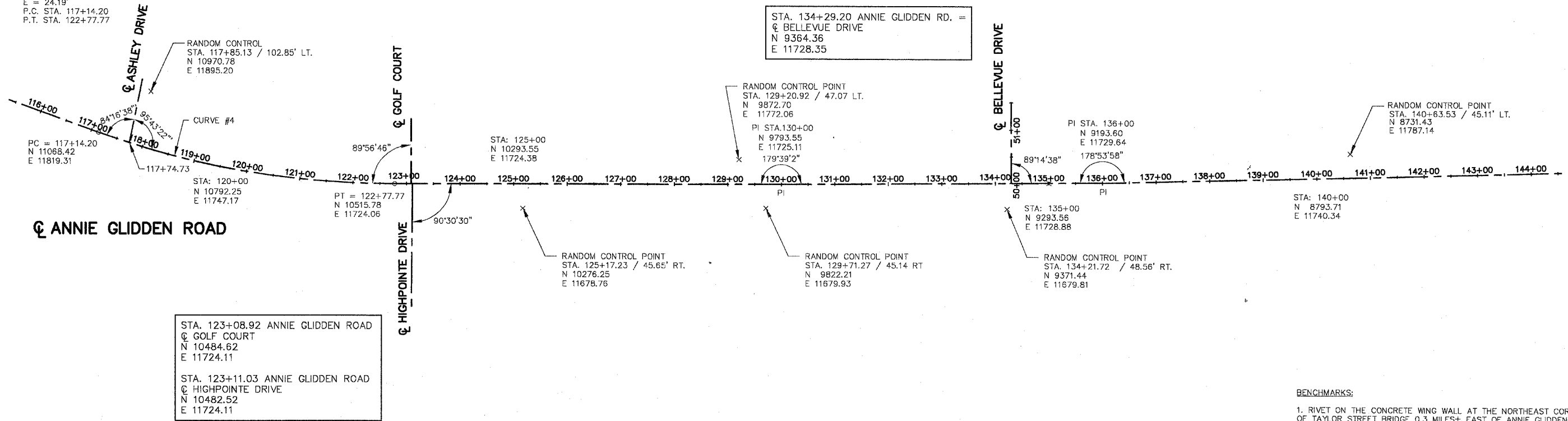
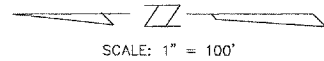
F.A.U.	CONTRACT NO.	COUNTY	TS
ROUTE	87335	DEKALB	S
5348	STATE SECTION		
	06-00160-02-WR		
ALIGNMENT, TIES AND BENCHMARKS			
F.H.W.A. REG.5 ILLINOIS PROJECT HPP-			

**RANDOM CONTROL POINTS**



**PROPOSED ANNIE GLIDDEN ROAD  
 CENTER LINE CURVE DATA - CURVE #4**

P.I. = 119+98.80  
 $\Delta = 19^\circ 43' 30''$   
 $D = 03^\circ 30' 00''$   
 $R = 1637.02'$   
 $T = 284.60'$   
 $L = 563.57'$   
 $E = 24.19'$   
 P.C. STA. 117+14.20  
 P.T. STA. 122+77.77



- BENCHMARKS:**
- RIVET ON THE CONCRETE WING WALL AT THE NORTHEAST CORNER OF TAYLOR STREET BRIDGE 0.3 MILES± EAST OF ANNIE GLIDDEN ROAD.  
 ELEVATION: 851.32
  - NORTHWEST BOLT ON FIRE HYDRANT AT THE SOUTHWEST CORNER OF ANNIE GLIDDEN ROAD AND TAYLOR STREET.  
 ELEVATION: 852.22
  - BOLT BY ARROW ON HYDRANT AT THE NORTHWEST CORNER OF HIGHPOINTE DRIVE AND ANNIE GLIDDEN ROAD.  
 ELEVATION: 876.74