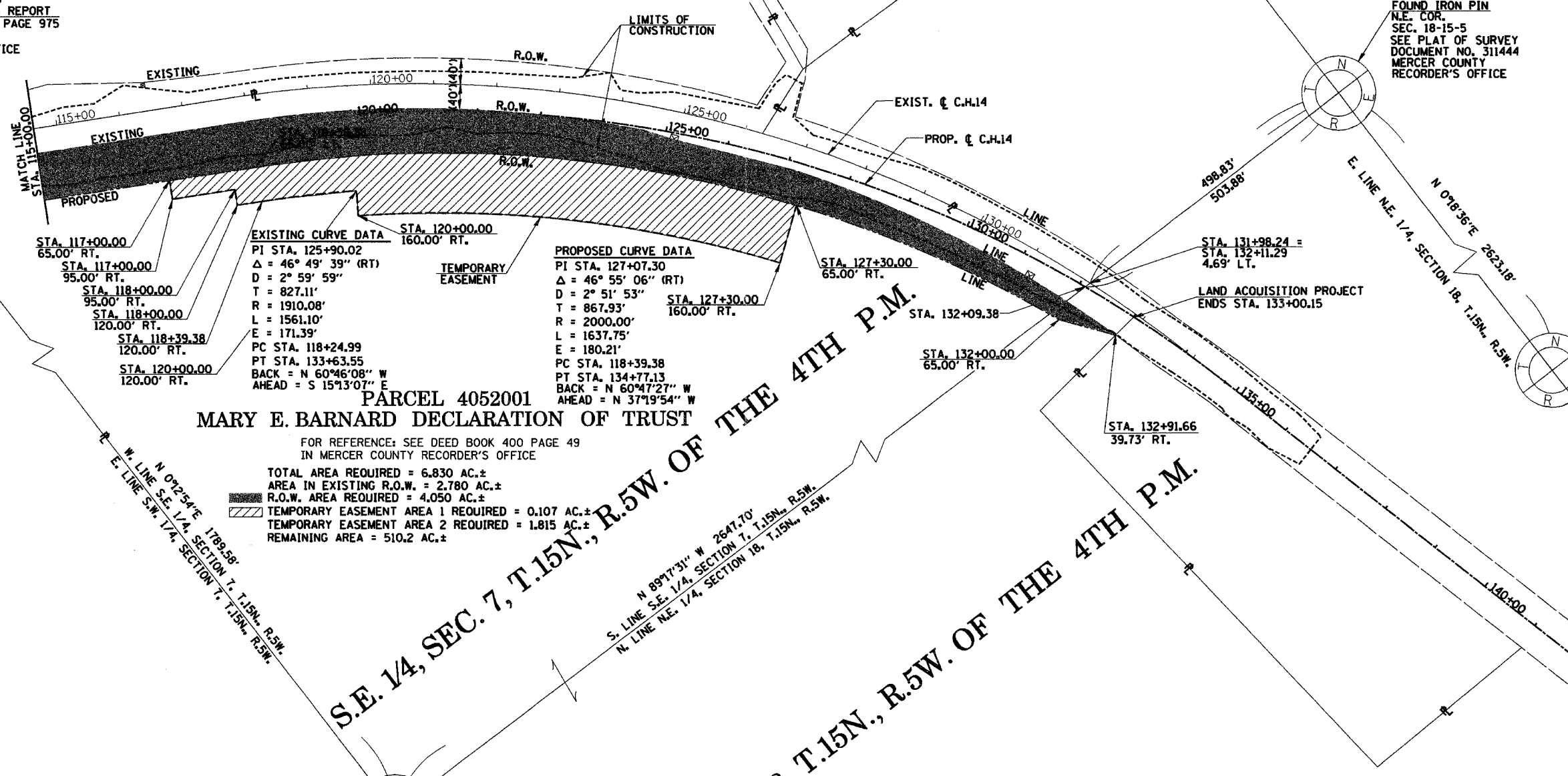
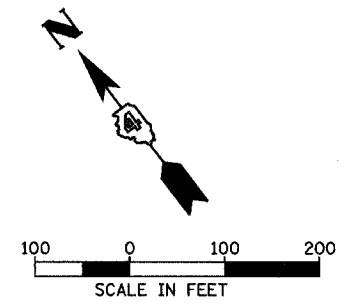


PARCEL 4052004
RANDY L. LOWERY AND PAMELA A. LOWERY

FOR REFERENCE: SEE DEED BOOK 492 PAGE 785
IN MERCER COUNTY RECORDER'S OFFICE

FOUND IRON PIN
SEE SURVEYOR'S REPORT
DEED BOOK 495 PAGE 975
MERCER COUNTY
RECORDER'S OFFICE

FOUND IRON PIN
N.E. COR.
SEC. 18-15-5
SEE PLAT OF SURVEY
DOCUMENT NO. 311444
MERCER COUNTY
RECORDER'S OFFICE



PARCEL 4052001
MARY E. BARNARD DECLARATION OF TRUST

FOR REFERENCE: SEE DEED BOOK 400 PAGE 49
IN MERCER COUNTY RECORDER'S OFFICE

- TOTAL AREA REQUIRED = 6.830 AC.±
- AREA IN EXISTING R.O.W. = 2.780 AC.±
- R.O.W. AREA REQUIRED = 4.050 AC.±
- TEMPORARY EASEMENT AREA 1 REQUIRED = 0.107 AC.±
- TEMPORARY EASEMENT AREA 2 REQUIRED = 1.815 AC.±
- REMAINING AREA = 510.2 AC.±

FOUND IRON PIN
N.W. COR., N.E. 1/4,
SEC. 18-15-5
SEE PLAT OF SURVEY
DOCUMENT NO. 311444
MERCER COUNTY
RECORDER'S OFFICE

FOUND IRON PIN
N.E. CORNER,
S. 1/2, N.W. 1/4,
SEC. 18-15-5
SEE PLAT OF SURVEY
DOCUMENT NO. 311444
MERCER COUNTY
RECORDER'S OFFICE

- NOTES**
- BEARINGS ARE ASSUMED
 - IRON PIN FOUND
 - ⊗ R.O.W. MARKER FOUND
 - () RECORD DATA
 - CONSTRUCTION LIMITS

RIGHT OF WAY PLANS
FAS ROUTE 209(C.H.14) OVER KEATING CREEK
SECTION 00-00091-00-BR
MERCER COUNTY
JOB NO. R-94-005-02
STA 115+00.00 TO STA 133+00.15
SCALE 1" = 100'