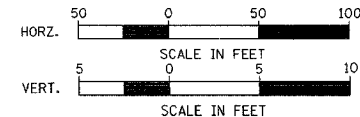
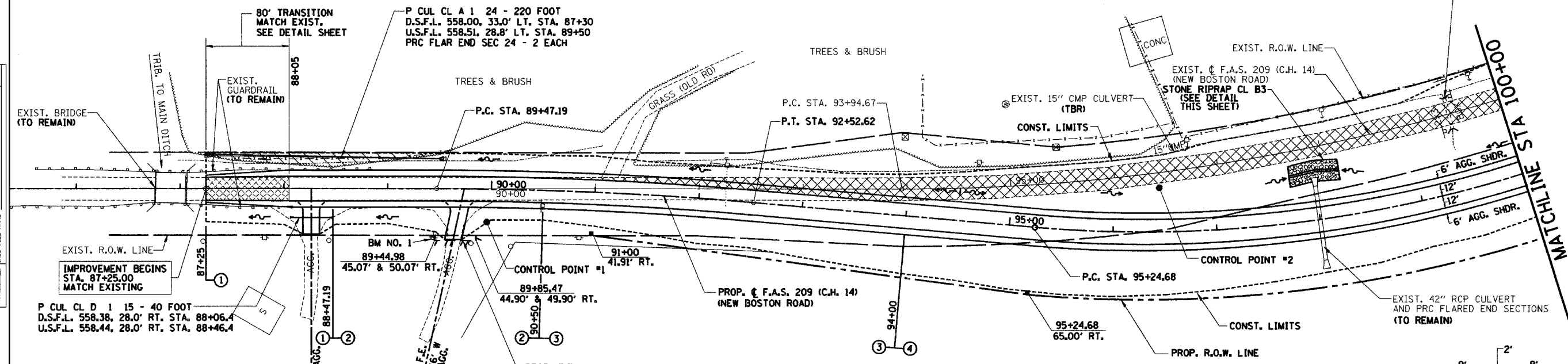


RTE.	SECTION	COUNTY	TOTAL SHEETS	SHEET NO.
C.H. 14	00-00091-00-BR	MERCER	111	21
STA. 87+25		TO STA. 100+00		
CONTRACT NO. 89312				



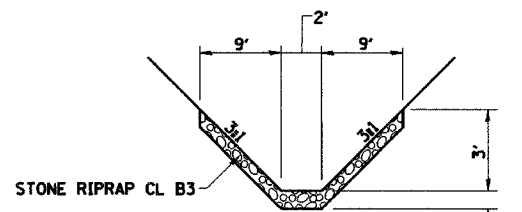
GEORGE C. WOODWARD AND NANCY R. WOODWARD



- (TBR) = TO BE REMOVED
- [Hatched Box] = EXISTING PAVEMENT TO BE REMOVED, QUANTITY INCLUDED IN PAVT REMOVAL SPL (50 YD)
- [Diagonal Lines] = TREES OR STUMPS TO BE REMOVED, QUANTITY INCLUDED IN TREE REMOV (ACRES)
- x = TREES OR STUMPS TO BE REMOVED, QUANTITY INCLUDED IN TREE REMOV 6-16 (UNITS)

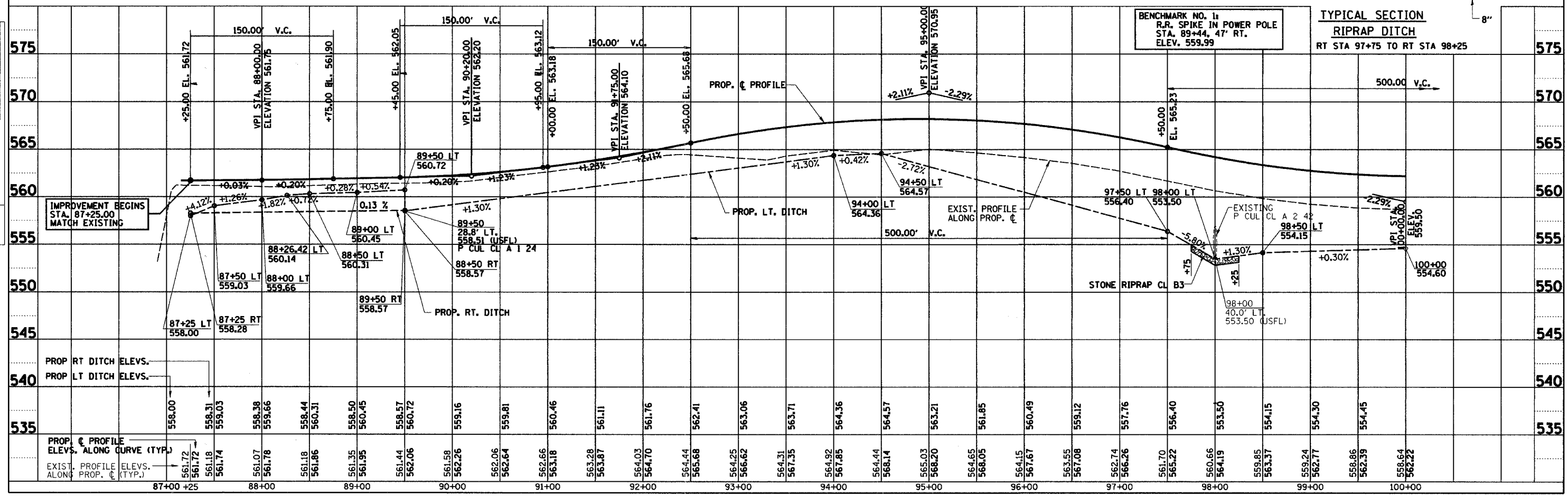
GEORGE C. WOODWARD AND NANCY R. WOODWARD

SEC. 7 T15N R5W 4TH PM



DATE	BY

DATE	BY



BENCHMARK NO. 1
R.P. SPIKE IN POWER POLE
STA. 89+44.47' RT.
ELEV. 559.99

TYPICAL SECTION
RIPRAP DITCH
RT STA 97+75 TO RT STA 98+25

STATION	PROP. C PROFILE ELEV. ALONG CURVE (TYP.)	EXIST. PROFILE ELEV. ALONG PROP. C (TYP.)
87+00	558.00	558.00
87+25	558.31	558.28
88+00	559.03	559.66
88+25	559.38	559.66
88+50	559.66	559.66
89+00	559.66	559.66
89+25	559.66	559.66
89+50	559.66	559.66
90+00	559.66	559.66
90+25	559.66	559.66
90+50	559.66	559.66
91+00	559.66	559.66
91+25	559.66	559.66
91+50	559.66	559.66
92+00	559.66	559.66
92+25	559.66	559.66
92+50	559.66	559.66
93+00	559.66	559.66
93+25	559.66	559.66
93+50	559.66	559.66
94+00	559.66	559.66
94+25	559.66	559.66
94+50	559.66	559.66
95+00	559.66	559.66
95+25	559.66	559.66
95+50	559.66	559.66
96+00	559.66	559.66
96+25	559.66	559.66
96+50	559.66	559.66
97+00	559.66	559.66
97+25	559.66	559.66
97+50	559.66	559.66
98+00	559.66	559.66
98+25	559.66	559.66
98+50	559.66	559.66
99+00	559.66	559.66
99+25	559.66	559.66
99+50	559.66	559.66
100+00	559.66	559.66