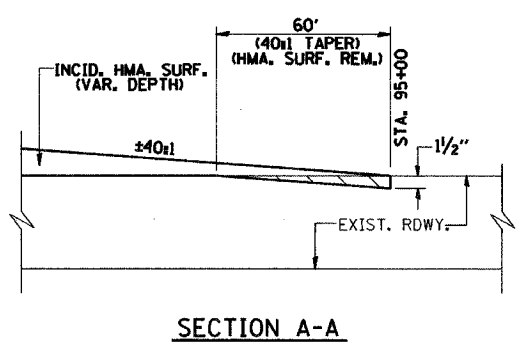
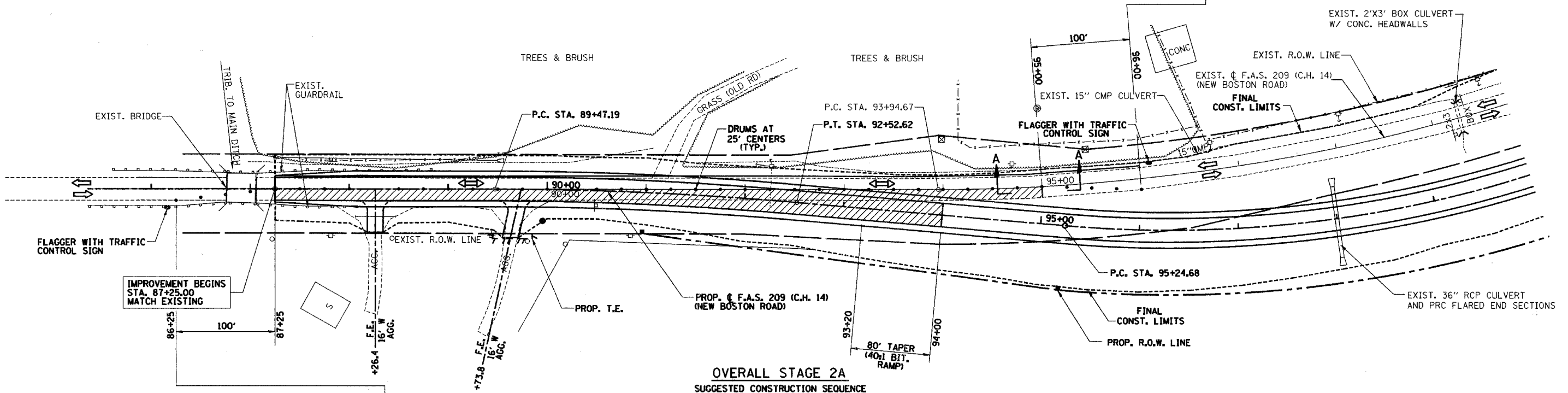
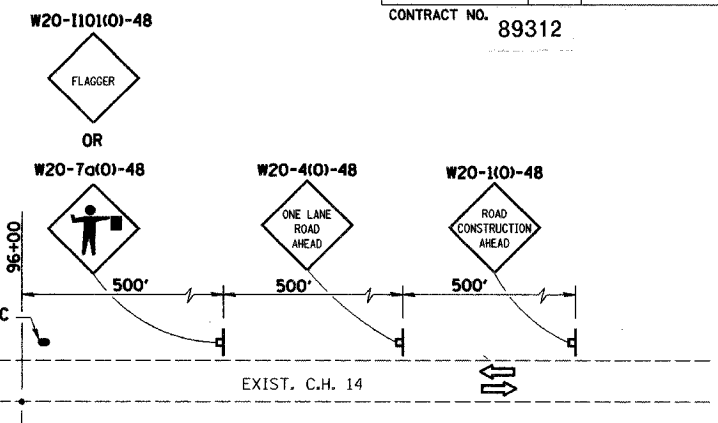
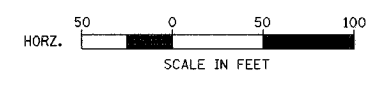


RTE.	SECTION	COUNTY	TOTAL SHEETS	SHEET NO.
C.H. 14 F.A.S. 209	00-00091-00-BR	MERCER	111	31
STA. 87+25	TO STA. 100+00			
FED. ROAD DIST. NO.	ILLINOIS	FED. AID PROJECT		

CONTRACT NO. 89312



SECTION A-A



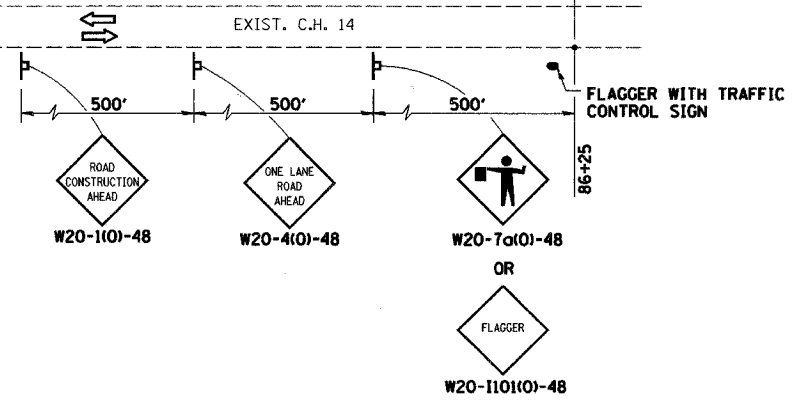
OVERALL STAGE 2A
SUGGESTED CONSTRUCTION SEQUENCE

MAINTAIN 2-WAY TRAFFIC ON 1-LANE EXISTING PAVEMENT DURING DAYLIGHT WORKING HOURS USING TRAFFIC CONTROL STDS. 701001, 701006, 701011, 701201 & 701301). ALTERNATE BETWEEN STAGE 2A AND 2B AS REQUIRED TO BUILD UP PAVEMENT TO THE FINAL BINDER COURSE ELEVATIONS.

STA. 87+25 TO 95+00

- 1 CONSTRUCT NEW PAVEMENT UNDER ONE LANE TRAFFIC, EXCLUDING SURFACE COURSE AND SHOULDERS STA 87+25 TO STA 94+00 AND STA 127+50 TO STA 136+50
- 2 CONSTRUCT TEMPORARY RAMPING BETWEEN EXISTING AND NEW PAVEMENT STA 92+34 TO STA 95+15 SOUTHBOUND LANE
- 3 CONSTRUCT TEMPORARY RAMPING BETWEEN EXISTING AND NEW PAVEMENT STA 125+00 TO STA 131+40 SOUTHBOUND LANE
- 4 APPLY TEMPORARY STRIPING PRIOR TO END OF DAY AS NEEDED

NOTE:
AT END OF WORK DAY, MOVE DRUMS TO EDGE OF PAVEMENT TO ALLOW FOR 2-WAY TRAFFIC AT NIGHT ON EXISTING ROADWAY.



- = HATCHED AREA INDICATES WORK AREA
- = DIRECTION OF TRAFFIC DURING NON WORKING HOURS
SHARED LANES WITH FLAGGING OPERATIONS DURING WORKING HOURS
- = SIGN
- = DRUM

TRAFFIC CONTROL - STAGE 2A		
Date	Designed: SMK	F.A.S. 209 (C.H. 14) OVER KEATING CREEK NEW BOSTON ROAD SECTION 00-00091-00-BR MERCER COUNTY
Revisions	Drawn: SRS	
	Checked: SMK	
	Approved: SMK	
Prepared by:	URS 345 East Ash Avenue Decatur, IL 62526	URS Job No. 21-00001253.01