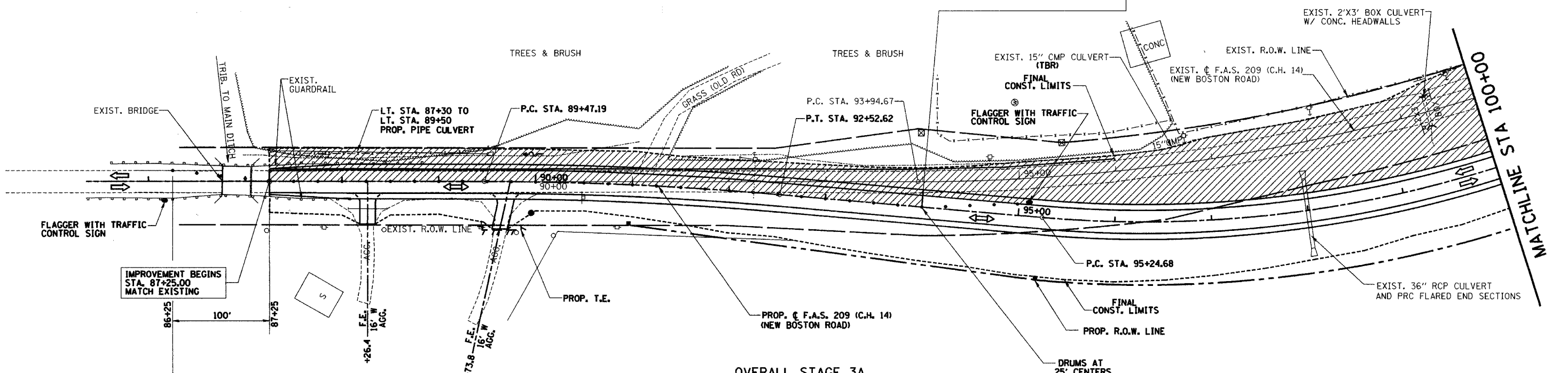
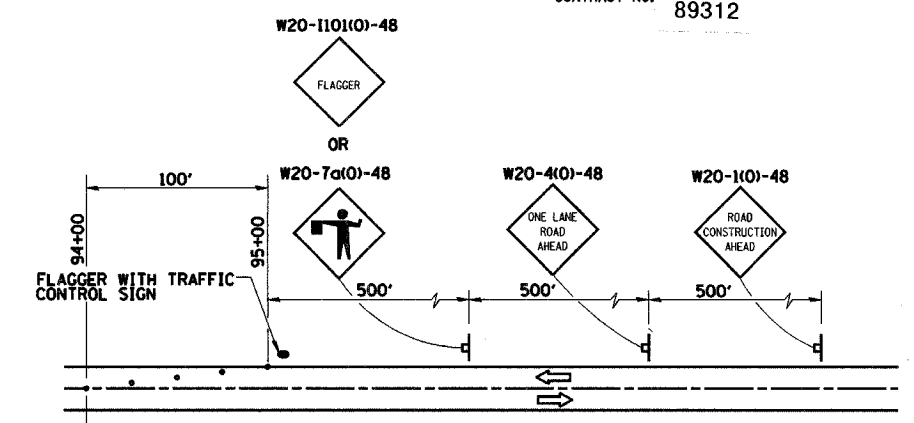
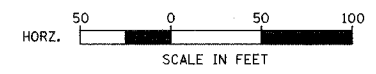


RTE.	SECTION	COUNTY	TOTAL SHEETS	SHEET NO.
C.H. 14	00-00091-00-BR	MERCER	111	38
F.A.S. 209				
STA. 87+25		TO STA. 100+00		
CONTRACT NO. 89312				

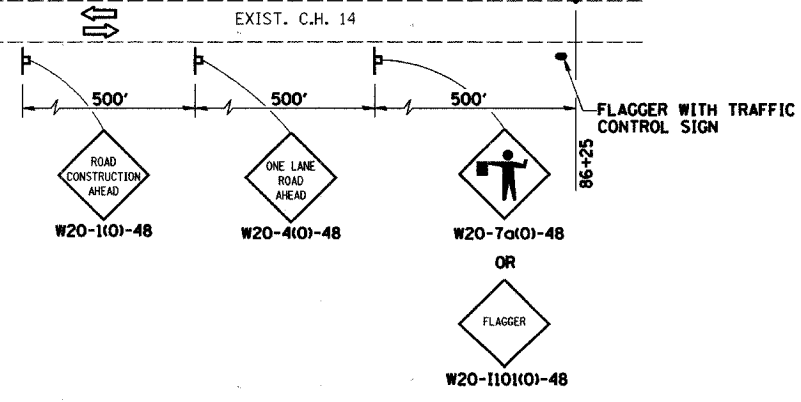


**OVERALL STAGE 3A**  
SUGGESTED CONSTRUCTION SEQUENCE

MAINTAIN 2-WAY TRAFFIC ON 1 LANE NEW PAVEMENT DURING DAYLIGHT WORKING HOURS USING TRAFFIC CONTROL STDS. 701001, 701006, 701011, 701201 & 701301  
STA. 87+25 TO 136+50

- 1 CONSTRUCT TEMPORARY ENTRANCE ACCESS FOR P.E. LT STA 104+85
- 2 CONSTRUCT P.E. LT STA 104+85
- 3 CONSTRUCT ENTRANCE AND CULVERT LT STA 103+35
- 4 REMOVE TEMPORAY ENTRANCE ACCESS LT STA 104+85
- 5 REMOVE 56' OF EXISTING 12" CROSS ROAD PIPE LT STA 105+37.50. RECONSTRUCT MANHOLE AND PLUG 15" PIPES.
- 6 RELOCATE PRC FLARED END SECTION
- 7 REMOVE REMAINING EXISTING PAVEMENT AND FINALIZE GRADING BETWEEN STA 87+25 AND EXISTING BRIDGE
- 8 CONSTRUCT F.E. AND CULVERT LT STA 109+50
- 9 REMOVE EXISTING BRIDGE AND GUARDRAIL
- 10 PARTIALLY REMOVE 4X6 BOX CULVERT STA 124+18.16 AS SHOWN IN PLANS
- 11 REMOVE REMAINING EXISTING PAVEMENT AND FINALIZE GRADING BETWEEN EXISTING BRIDGE AND STA 136+50
- 12 REMOVE TEMPORARY PIE CULVERTS AND MANHOLE LT STA 125+00 AND PLACE PROPOSED END SECTION
- 13 CONSTRUCT SIDEROAD LT STA 126+70.99
- 14 REMOVE REMAINING EXISTING PAVEMENT AND FINALIZE GRADING BETWEEN EXISTING BRIDGE AND STA 136+50
- 15 REMOVE TEMPORARY LENGTH OF PIPE CULVERT LT STA 127+25 AND RELOCATE END SECTION
- 16 CONSTRUCT SURFACE COURSE STA 87+25 TO 94+00 AND STA 127+50 TO 136+50 NORTHBOUND LANE
- 17 CONSTRUCT SHOULDER LT STA 87+25 TO 94+00 AND LT STA 127+50 TO 136+50
- 18 APPLY FINAL STRIPING STA 87+25 TO STA 94+00
- 19 APPLY FINAL STRIPING STA 127+50 TO STA 136+50

**NOTE:**  
AT END OF WORK DAY, MOVE DRUMS TO EDGE OF PAVEMENT TO ALLOW FOR 2-WAY TRAFFIC AT NIGHT ON NEW ROADWAY.



= HATCHED AREA INDICATES WORK AREA  
 = DIRECTION OF TRAFFIC  
 = SIGN  
 = DRUM

TRAFFIC CONTROL - STAGE 3A		
Date	Designed: SMK	F.A.S. 209 (C.H. 14) OVER KEATING CREEK NEW BOSTON ROAD SECTION 00-00091-00-BR MERCER COUNTY
Revisions	Drawn: SRS	
	Checked: SMK	
	Approved: SMK	
Prepared by:	<b>URS</b>	
345 East Ash Avenue Decatur, IL 62526		URS Job No. 21-00001253.01