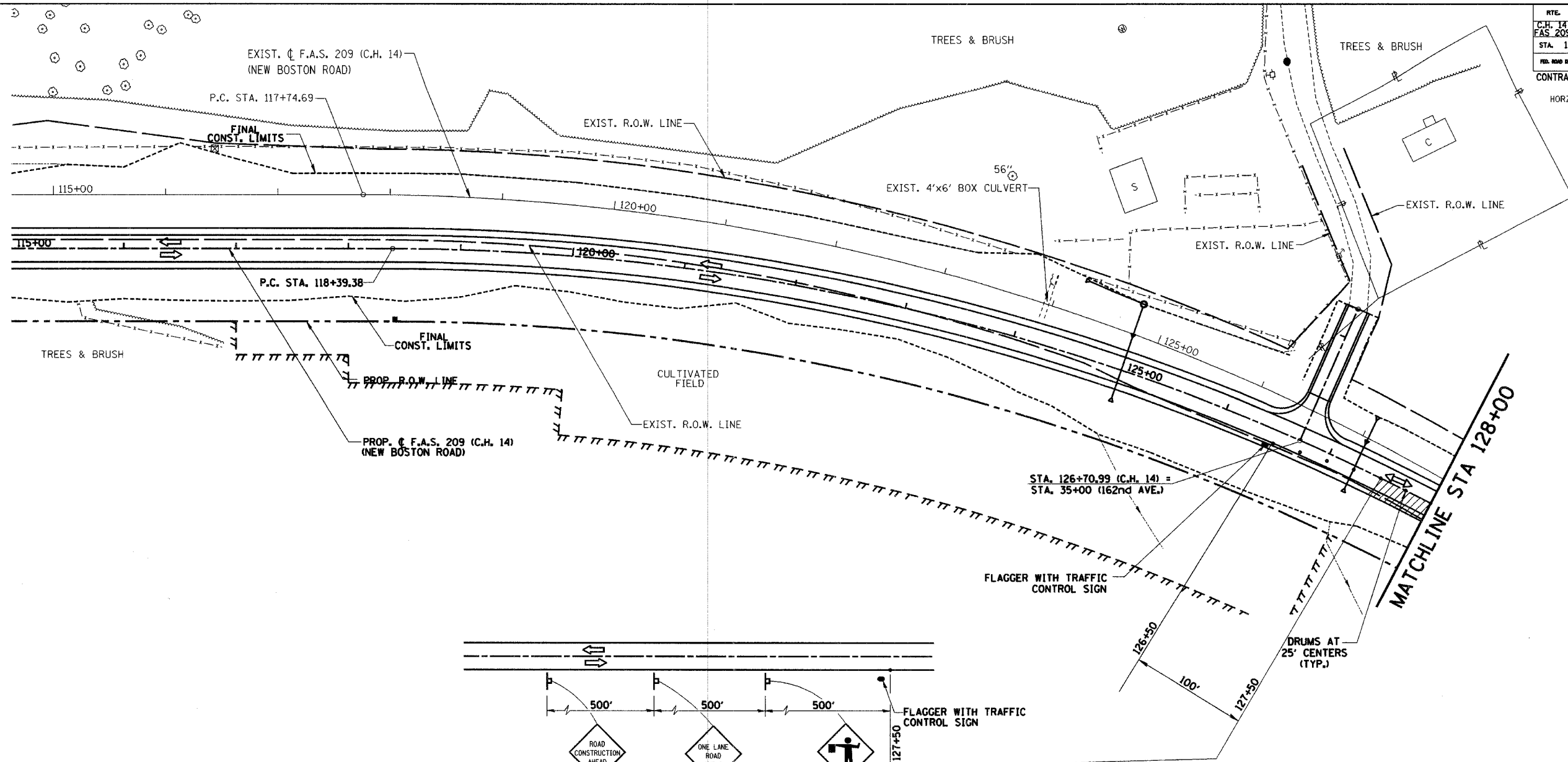
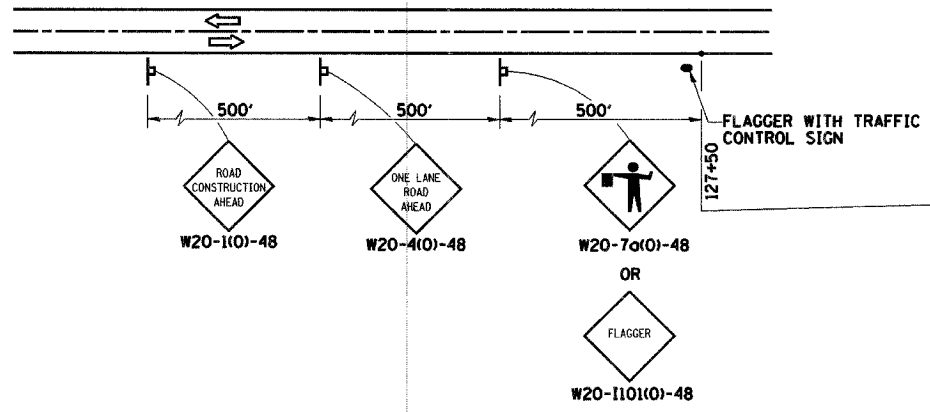


RTE.	SECTION	COUNTY	TOTAL SHEETS	SHEET NO.
C.H. 14 F.A.S. 209	00-00091-00-BR	MERCER	111	43
STA. 115+00	TO STA. 128+00			
FED. ROAD DIST. NO.	ILLINOIS	FED. AID PROJECT		
CONTRACT NO. 89312				
HORZ. SCALE IN FEET				



- = HATCHED AREA INDICATES WORK AREA
- = DIRECTION OF TRAFFIC
- = SIGN
- = DRUM



OVERALL STAGE 3B
SUGGESTED CONSTRUCTION SEQUENCE

MAINTAIN 2-WAY TRAFFIC ON 1 LANE NEW PAVEMENT DURING DAYLIGHT WORKING HOURS USING TRAFFIC CONTROL STDS. 701001, 701006, 701011, 701201 & 701301

STA. 87+25 TO 136+50

- 1 CONSTRUCT SURFACE COURSE STA 87+25 TO 94+00 AND STA 127+50 TO 136+50 SOUTHBOUND LANE
- 2 CONSTRUCT SHOULDER AND MAILBOX TURNOUTS RT STA 87+25 TO 94+00 AND RT STA 127+50 TO 136+50
- 3 APPLY FINAL STIPING STA 87+25 TO STA STA 94+00
- 4 APPLY FINAL STIPING STA 127+50 TO STA 136+50
- 5 CONSTRUCT F.E. RT STA 88+26.4 AND STA 89+73.8
- 6 CONSTRUCT F.E. RT STA 133+29.8
- 7 CONSTRUCT P.E. RT STA 135+12.5 AND STA 135+98.8

NOTE:
AT END OF WORK DAY, MOVE DRUMS TO EDGE OF PAVEMENT TO ALLOW FOR 2-WAY TRAFFIC AT NIGHT ON NEW ROADWAY.

TRAFFIC CONTROL - STAGE 3B		
Date	Designed: SMK	F.A.S. 209 (C.H. 14) OVER KEATING CREEK NEW BOSTON ROAD SECTION 00-00091-00-BR MERCER COUNTY
Revisions	Drawn: SRS	
	Checked: SMK	
	Approved: SMK	
Prepared by: URS	345 East Ash Avenue Decatur, IL 62526	URS Job No. 21-00001253.01