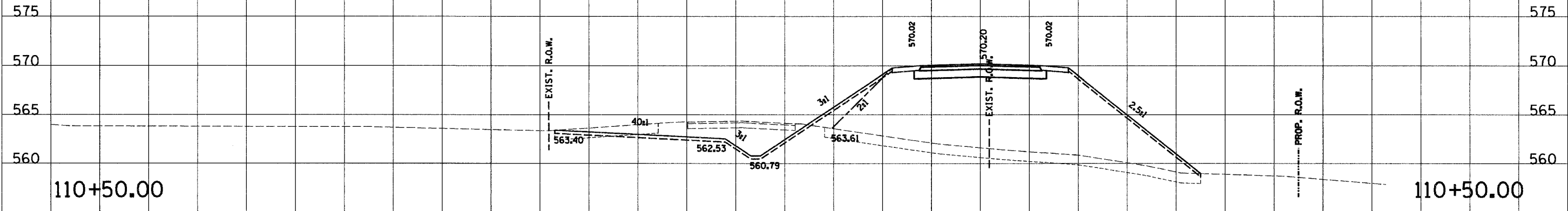
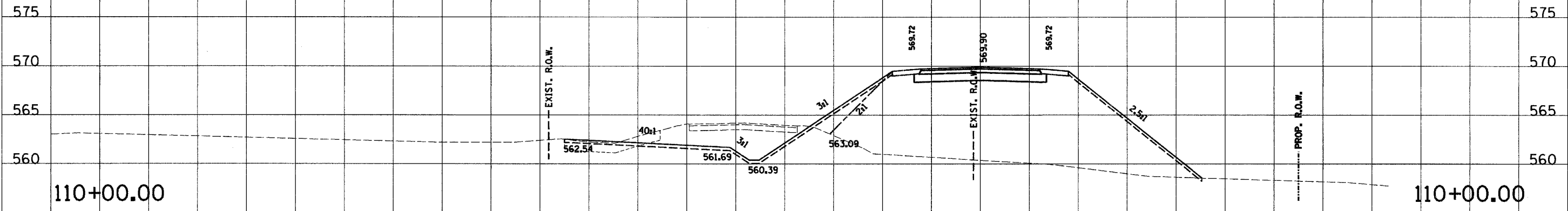


180 170 160 150 140 130 120 110 100 90 80 70 60 50 40 30 20 10 0 10 20 30 40 50 60

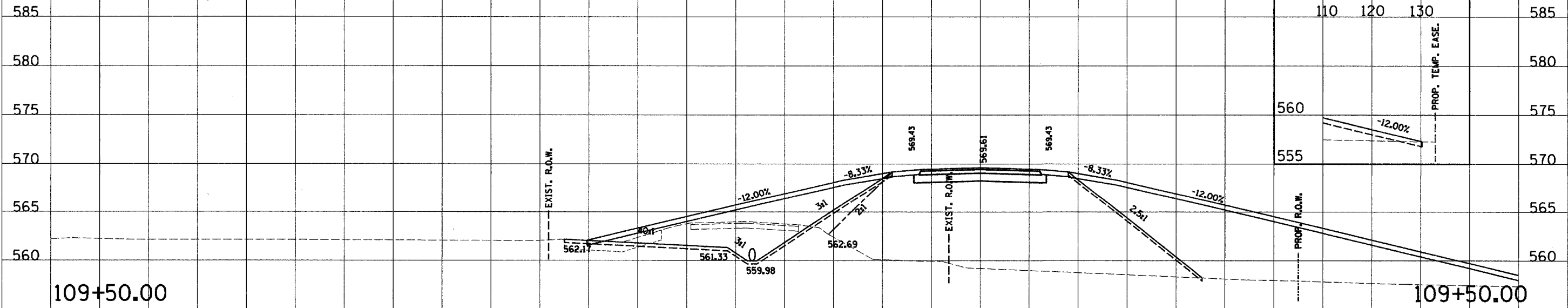
RTE. NO. FAS 209 C.H. 14	SECTION NO. 00-00091-00-BR	COUNTY MERCER	TOTAL SHTS. 111	SHEET NO. 81
STA. 87+00.00		TO STA. 87+50.00		
FED. ROAD DIST. NO.		ILLINOIS PROJECT		
CONTRACT NO. 89312		SCALE HORZ. 1"=10' VERT. 1"=5'		



110+50.00 TE1A = 76.9 WEP1A = 0.0 WEE1A = 0.0 C1B = 0.0 F1B = 491.1 WTS1B = 0.0 TS1B = 9.3 C3 = 74.3 F3 = 13.2 TS3 = 22.3



110+00.00 TE1A = 0.0 WEP1A = 0.0 WEE1A = 0.0 C1B = 0.1 F1B = 481.6 WTS1B = 0.0 TS1B = 9.4 C3 = 76.3 F3 = 12.6 TS3 = 22.0



109+50.00 TE1A = 0.0 WEP1A = 0.0 WEE1A = 0.0 C1B = 0.1 F1B = 519.1 WTS1B = 0.0 TS1B = 9.5 C3 = 81.1 F3 = 12.6 TS3 = 22.0

180 170 160 150 140 130 120 110 100 90 80 70 60 50 40 30 20 10 0 10 20 30 40 50 60 70 80 90 100

C.H. 14