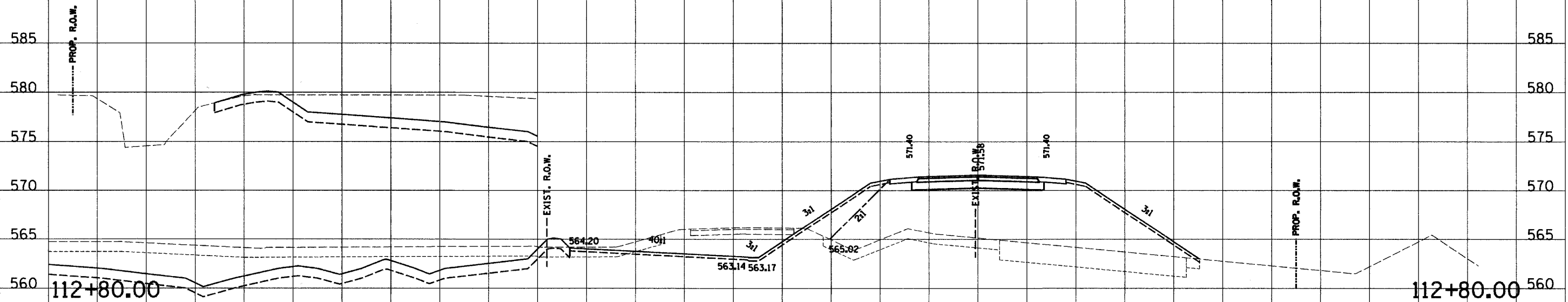
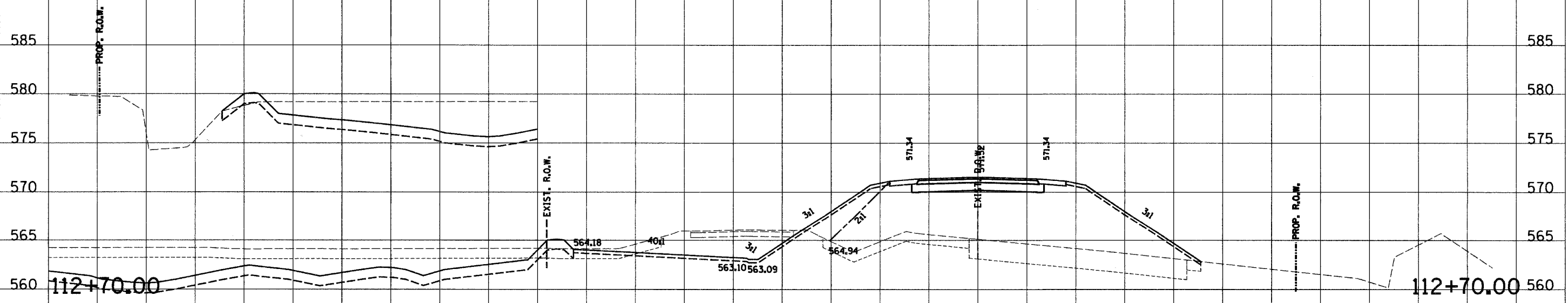


180 170 160 150 140 130 120 110 100 90 80 70 60 50 40 30 20 10 0 10 20 30 40 50 60

RTE. NO.	SECTION NO.	COUNTY	TOTAL SHTS.	SHEET NO.
FAS 209 C.H. 14	00-00091-00-BR	MERCER	111	88
STA. 87+00.00		TO STA. 87+50.00		
FED. ROAD DIST. NO.		ILLINOIS PROJECT		
CONTRACT NO. 89312		SCALE		
		HORZ. 1"=10'		
		VERT. 1"=5'		



112+80.00 TE1A = 38.7 WEP1A = 128.6 WEE1A = 76.4 C1B = 297.7 F1B = 440. WTS1B = 142.6 TS1B = 9.2 C3 = 79.0 F3 = 25.0 TS3 = 19.9



112+70.00 TE1A = 32.7 WEP1A = 130.0 WEE1A = 89.0 C1B = 285. F1B = 447.4 WTS1B = 141.7 TS1B = 9.3 C3 = 77.0 F3 = 25.1 TS3 = 21.4

C.H. 14

180 170 160 150 140 130 120 110 100 90 80 70 60 50 40 30 20 10 0 10 20 30 40 50 60 70 80 90 100