

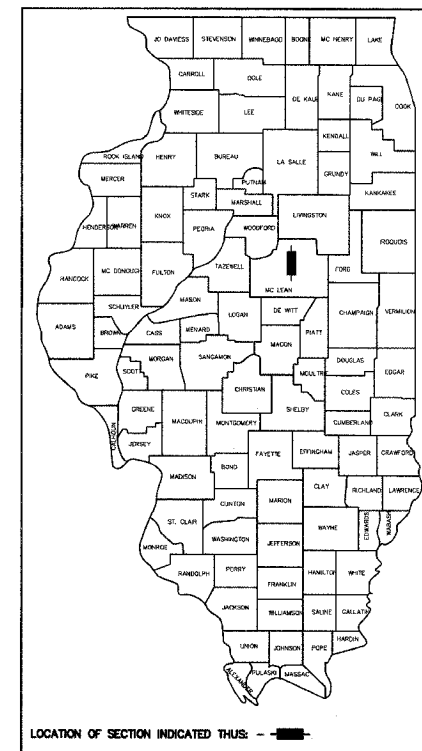
F.A. ETC.	SECTION	COUNTY	TOTAL SHEETS	SHEET NO.
6385	96-00306-00-SP	McLEAN	30	1
STA.		TO STA.		
FED. ROAD DIST. NO.		ILLINOIS	FED. AID PROJECT	

IDOT STANDARDS

- 280001-03 Temporary Erosion Control Systems
- 424001-04 Curb Ramps for Sidewalks
- 482011-02 Bit. Shoulder Strips/Shoulders With Resurfacing or Widening and Resurfacing Projects
- 542101-01 Reinforced Concrete End Sections for Pipe Culverts 375 mm (15") thru 900 mm (36") Diameter at Right Angles With Roadway
- 602301-01 Inlet, Type A
- 602306-01 Inlet, Type B
- 602401-01 Manhole, Type A
- 602601-01 Precast Reinforced Concrete Flat Slab Top
- 604006-02 Frame and Grate, Type 3
- 606001-03 Concrete Curb Type B and Combination Concrete Curb and Gutter
- 606201-01 Type B Gutter (Inlet, Outlet, and Entrance)
- 606301-02 PC Concrete Islands and Medians
- 606306-02 Corrugated PC Concrete Medians
- 606401 Paved Ditch
- 701326-02 Lane Closure, 2L, 2W, Pavement Widening for Speeds > 45 MPH
- 701501-03 Urban Lane Closure, 2L, 2W, Undivided
- 701601-04 Urban Lane Closure, Multilane 1W or 2W with Nontraversable Median
- 701701-04 Urban Lane Closure, Multilane Intersection
- 702001-06 Traffic Control Devices
- 720001 Sign Panel Mounting Details
- 780001-01 Typical Pavement Markings
- 814001-01 Concrete Handholes
- 857001 Standard Phase Designation Diagrams and Phase Sequences
- 877001-02 Steel Mast Arm Assembly and Pole
- 878001-05 Concrete Foundation Details
- 880006 Traffic Signal Mounting Details
- 885001 Detector Loop Installations
- 885006 Typical Layouts for Detection Loops

STATE OF ILLINOIS
DEPARTMENT OF TRANSPORTATION
DIVISION OF HIGHWAYS
PLANS FOR PROPOSED FEDERAL HAZARD ELIMINATION SAFETY PROGRAM
CITY OF BLOOMINGTON AND McLEAN COUNTY HIGHWAY DEPARTMENT
MARTIN LUTHER KING JR. DRIVE AND WHITE OAK ROAD
SECTION 96-00306-00-SP
PROJECT NUMBER HS-M-6385(002)
JOB NUMBER C-95-310-06

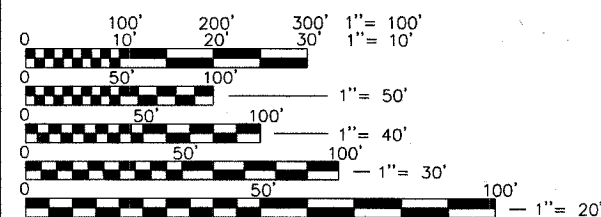
A part of the E.1/2 of Sec. 31, T. 24 N., R. 2 E., 3 P.M., City of Bloomington, McLean County, Illinois
 and a part of the W.1/2 of Sec. 32, T. 24 N., R. 2 E., 3 P.M., Town of Normal, McLean County, Illinois



Index of Sheets

Sht. No.	Title
1	Cover Sheet
2-3	Typical Sections & Quantity Summary
4-5	Schedules & Quantity Summary
6-7	Demolition Plans
8-9	Martin Luther King Jr. Drive Plan & Profile
10-11	White Oak Road Plan & Profile
12-14	Traffic Signal Plans
15-18	Martin Luther King Jr. Drive Cross Sections
19-23	White Oak Road Cross Sections
24-28	IDOT Standards
29-30	Erosion Control & Pavement Marking Plans

- Benchmark #1**
 "□" Chiseled on the Concrete Base of the Railroad Signal on the South West Corner of Martin Luther King Jr. Drive and White Oak Road. 771.54
- Benchmark #2**
 Top of Operating Nut on First Fire Hydrant on the East Side of White Oak Road North of Martin Luther King Jr. Drive. 770.50
- Benchmark #3**
 Spike in 2nd Power Pole South of Martin Luther King Jr. Drive on the East Side of White Oak Road. 767.11



FULL SIZE PLANS HAVE BEEN PREPARED USING STANDARD ENGINEERING SCALES, REDUCED SIZED PLANS WILL NOT CONFORM TO STANDARD SCALES, IN MAKING MEASUREMENTS ON REDUCED PLANS, THE ABOVE SCALES MAY BE USED.

CALL JULIE. BEFORE YOU DIG: 1-800-892-0123

CONTRACT NO. 91362

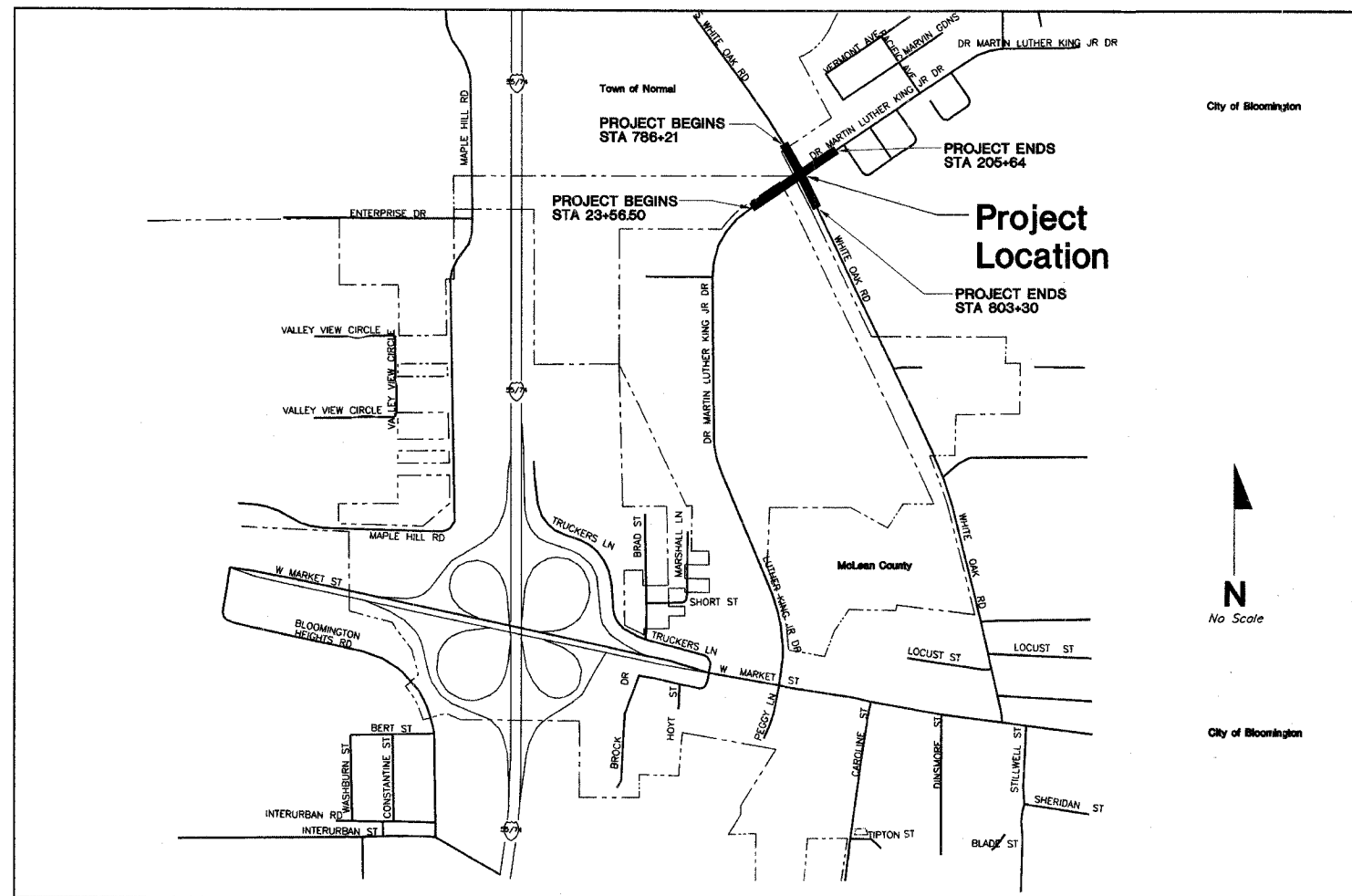
DESIGN DESIGNATION

MARTIN LUTHER KING JR. DRIVE:
 EXISTING ADT: 2006 = 4431
 PROPOSED ADT: 2026 = 14264
 5.7% SU/MU
 94.3% PU

WHITE OAK ROAD:
 EXISTING ADT: 2006 = 6591
 PROPOSED ADT: 2026 = 13,786
 6% SU/MU
 94% PU

FUNCTIONAL CLASSIFICATION:
 MARTIN LUTHER KING JR. DRIVE = LOCAL COLLECTOR HIGHWAY
 WHITE OAK ROAD = LOCAL ROAD

THE PROPOSED STREET IMPROVEMENTS FOR MARTIN LUTHER KING JR. DRIVE AND WHITE OAK ROAD RECONSTRUCTION WERE DESIGNED IN ACCORDANCE WITH THE FEDERAL AID PROCEDURES FOR LOCAL HIGHWAY IMPROVEMENTS.



Location Map
 GROSS LENGTH OF IMPROVEMENT: 3020' = 0.57 MILES
 NET LENGTH OF IMPROVEMENT: 2640' = 0.50 MILES



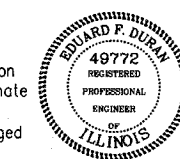
APPROVED _____ 11-29 2006
 JACK MITCHELL COUNTY ENGINEER
 McLEAN COUNTY HIGHWAY DEPARTMENT

APPROVED _____ Nov. 29 2006
 DOUG GROVESTEEN DIRECTOR OF ENGINEERING
 CITY OF BLOOMINGTON

PASSED _____ 12/12 2006
 DISTRICT ENGINEER OF LOCAL ROADS AND STREETS

RELEASED FOR BID BASED UPON LIMITED REVIEW _____ Dec 12 2006
 DEPUTY DIRECTOR OF HIGHWAYS REGION 3 ENGINEER

STATE OF ILLINOIS DEPARTMENT OF TRANSPORTATION



Edward F. Duran 6/28/06
 EDUARD F. DURAN I.R.P.E. #49772 DATE

Lewis, Yockey & Brown, Inc.
 Consulting Engineers & Land Surveyors

505 North Main Street Bloomington, Illinois Ph. (309) 829-2552
 222 East Center Street LeRoy, Illinois Ph. (309) 962-8151
 155 South Elm Street El Paso, Illinois Ph. (309) 527-2552

Martin Luther King Jr Drive and White Oak Road Construction Plans Cover Sheet

Rev. 11-3-05
 6-27-06
 464/558
 MB/sn
 EFD
 EFD

Sheet **1** of 30

4018.63