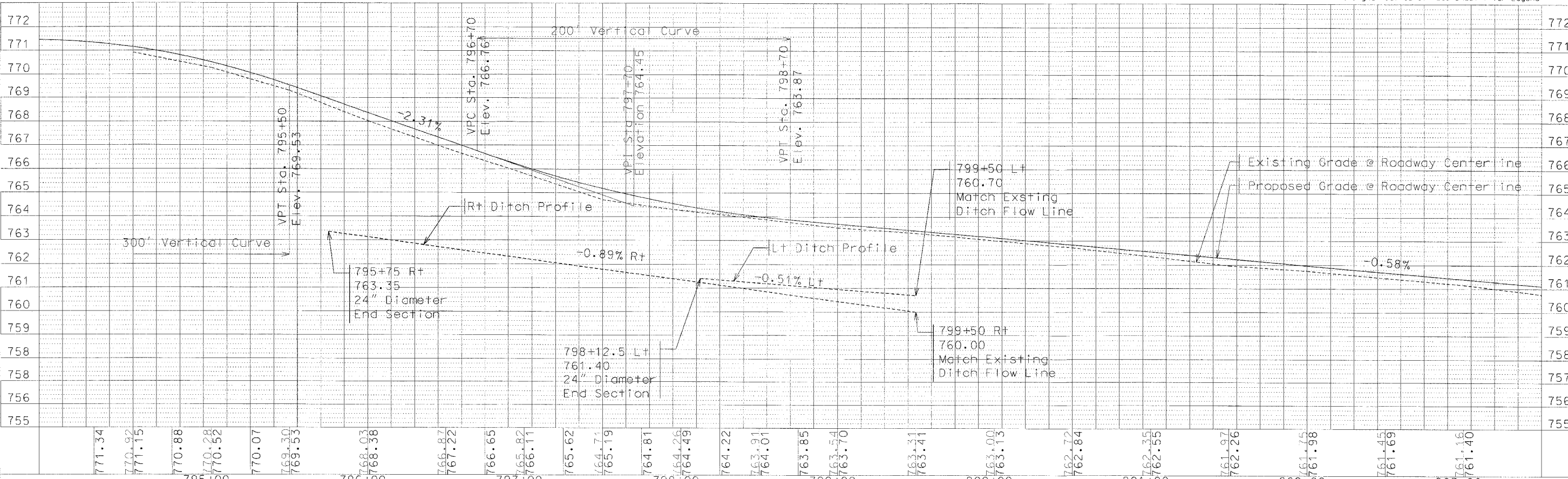
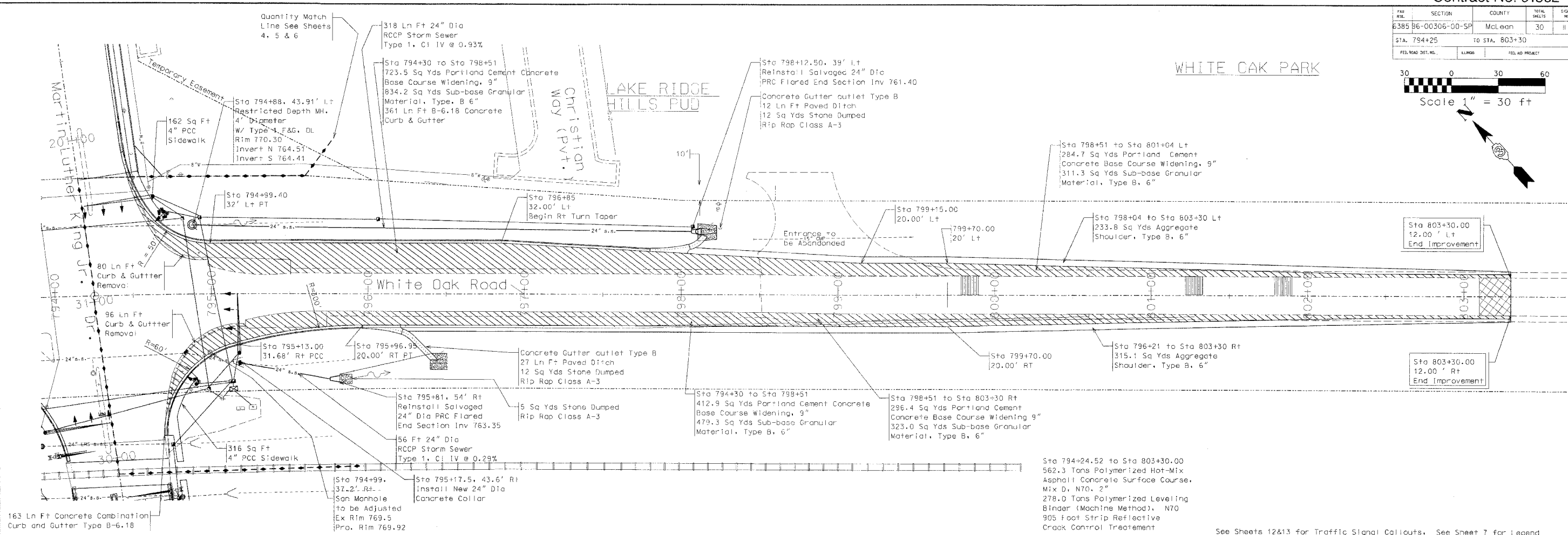
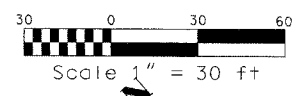


FED. DIST.	SECTION	COUNTY	TOTAL SHEETS	SHEET NO.
6385	96-00306-00-5P	McLean	30	11
STA. 794+25		TO STA. 803+30		
FED. ROAD DIST. NO.	LOCAL	FED. AID PROJECT		



772	771	770	769	768	767	766	765	764	763	762	761	760	759	758	757	756	755																										
771.34	770.92	771.15	770.88	770.68	770.52	770.07	769.30	769.53	768.03	768.38	766.87	767.22	766.65	765.82	766.11	765.62	764.71	765.19	764.81	764.26	764.49	764.22	763.91	764.01	763.85	763.54	763.70	763.31	763.41	763.00	763.13	762.72	762.84	762.35	762.55	761.97	762.26	761.76	761.98	761.45	761.69	761.16	761.40
795+00			796+00			797+00			798+00			799+00			800+00			801+00			802+00			803+00																			

Lewis, Yockey & Brown, Inc.  
 Consulting Engineers & Land Surveyors  
 400 North Main Street, 2nd Floor, Center Street, 155 South Elm Street  
 Birmingham, AL 35203, Montgomery, AL 36104, Ft. Payne, AL 35954  
 Ph. 334/252-2552 Ph. 334/962-8151 Ph. 334/921-2552

MLK and WHITE OAK RD.  
 Intersection Improvements  
 South White Oak Road  
 Plan and Profile

Sheet 11 of 30