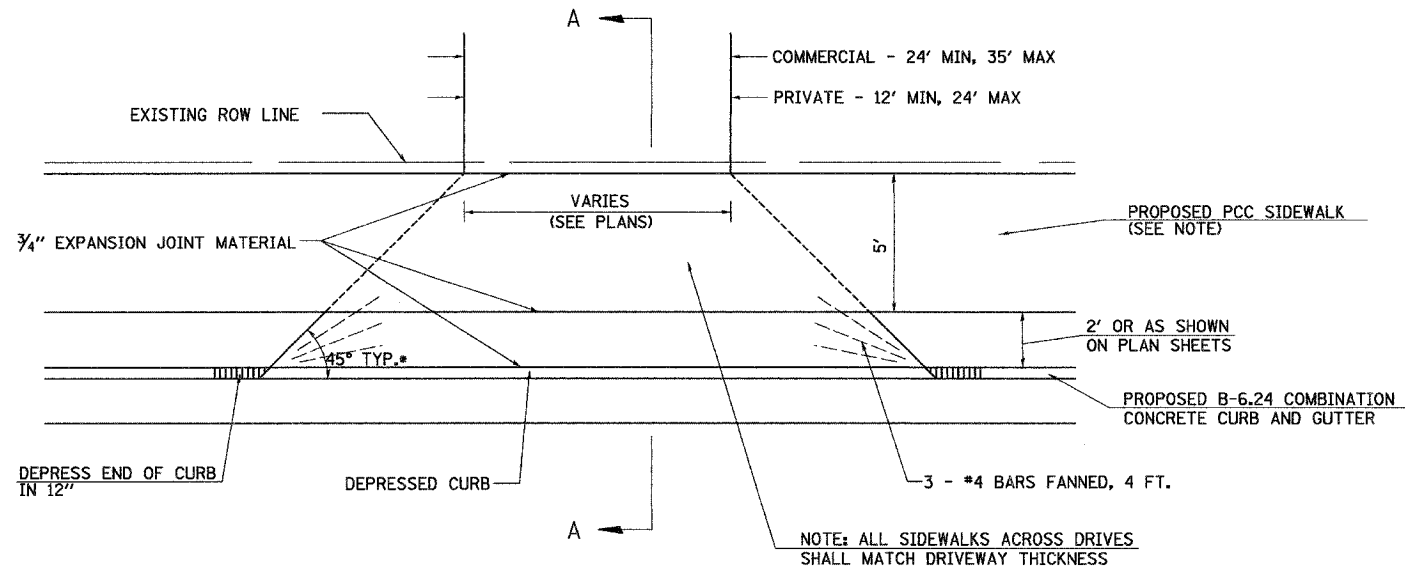
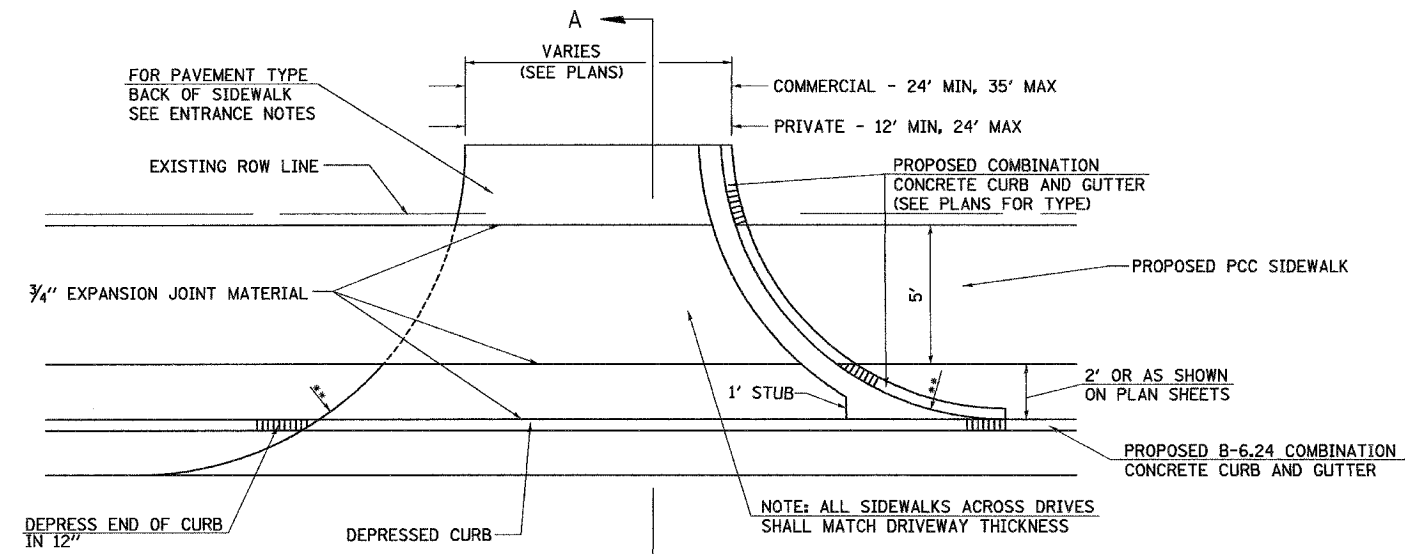


F.A.U. RTE.	SECTION	COUNTY	TOTAL SHEETS	SHEET NO.
8183	04-00120-00-FP	MORGAN	28	17
FED. ROAD DIST. NO.		ILLINOIS	FED. AID PROJECT	

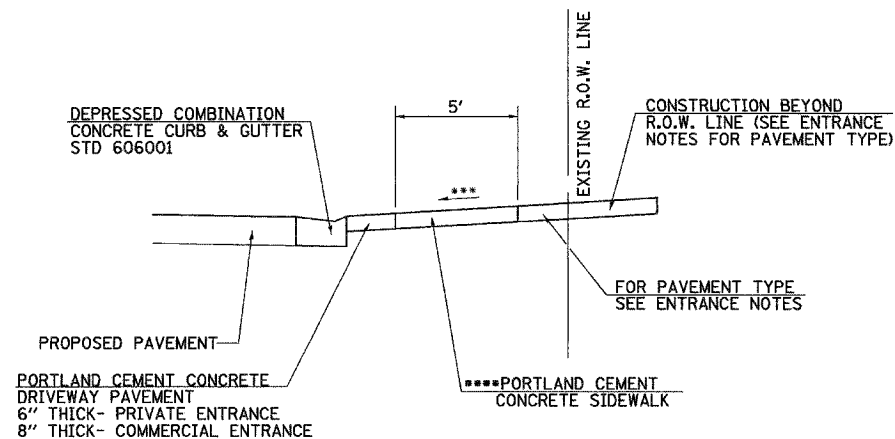
**PROPOSED ENTRANCE DETAIL**



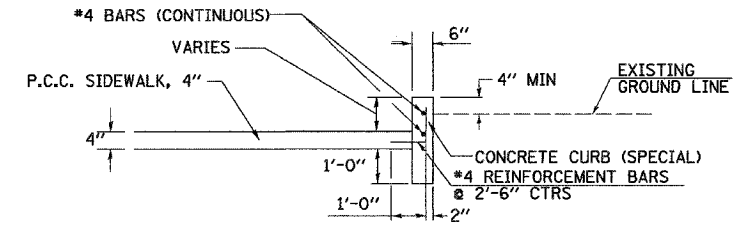
**PLAN - WITH FLARES**



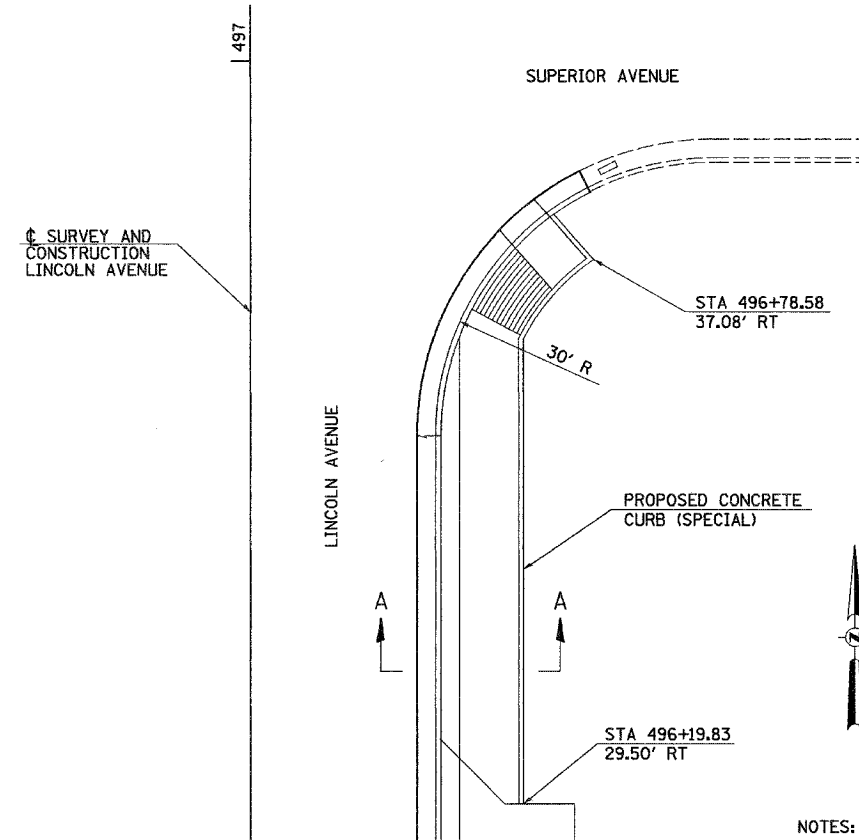
**PLAN - WITH RADII**



**SECTION A-A**



**SECTION A-A THRU DRIVEWAY & CURB**



**PLAN**

**CONCRETE CURB (SPECIAL) DETAIL**

**ENTRANCE NOTES:**

DRIVEWAY PAVEMENT THICKNESS SHALL BE:

EXISTING AGGREGATE PRIVATE ENTRANCES-  
AGGREGATE SURFACE COURSE, TYPE B, 6"

EXISTING AGGREGATE COMMERCIAL ENTRANCES-  
AGGREGATE SURFACE COURSE, TYPE B, 8"

EXISTING P.C.C. PRIVATE ENTRANCES-  
P.C.C. DRIVEWAY PAVEMENT, 6"

EXISTING P.C.C. COMMERCIAL ENTRANCES-  
P.C.C. DRIVEWAY PAVEMENT, 8"

EXISTING BITUMINOUS ENTRANCE-  
AGGREGATE BASE COURSE, TYPE B, 8" WITH  
INCIDENTAL HOT-MIX ASPHALT SURFACING, 2"

SEE DRIVEWAY SCHEDULE FOR LOCATIONS

TO PREVENT PAVEMENT WATER FROM FLOWING BACK TO THE ENTRANCE, ENTRANCES ON A NEGATIVE GRADE (SLOPING AWAY FROM THE PAVEMENT) SHALL BE CONSTRUCTED TO SLOPE TOWARDS THE PAVEMENT AS SHOWN ON THE CROSS SECTIONS OR AS DETERMINED BY THE ENGINEER.

\*\*\*2% MAX. SIDEWALK CROSS-SLOPE SHALL BE CARRIED ACROSS ALL PROPOSED ENTRANCES.

\*\*\*\*SIDEWALK THROUGH ENTRANCES SHALL BE PAID FOR PER SQUARE FOOT AS PORTLAND CEMENT CONCRETE SIDEWALK, 4", AS SPECIFIED IN SECTION 424 OF THE STANDARD SPECIFICATIONS.

**NOTES:**

ALL REINFORCEMENT BARS IN THE CONCRETE CURB WILL BE INCLUDED IN THE COST PER FOOT FOR CONCRETE CURB (SPECIAL).

BEND #4 TIE BARS TO FIT FIELD CONDITIONS.

ALL JOINTS IN THE DRIVEWAY SHALL BE EXTENDED OPPOSITE THE CONCRETE CURB (SPECIAL)

REVISIONS	
NAME	DATE

ILLINOIS DEPARTMENT OF TRANSPORTATION

**SPECIAL DETAILS**

DATE JULY, 2006

DRAWN BY JMO  
CHECKED BY JRB