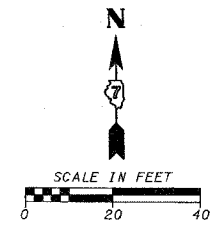
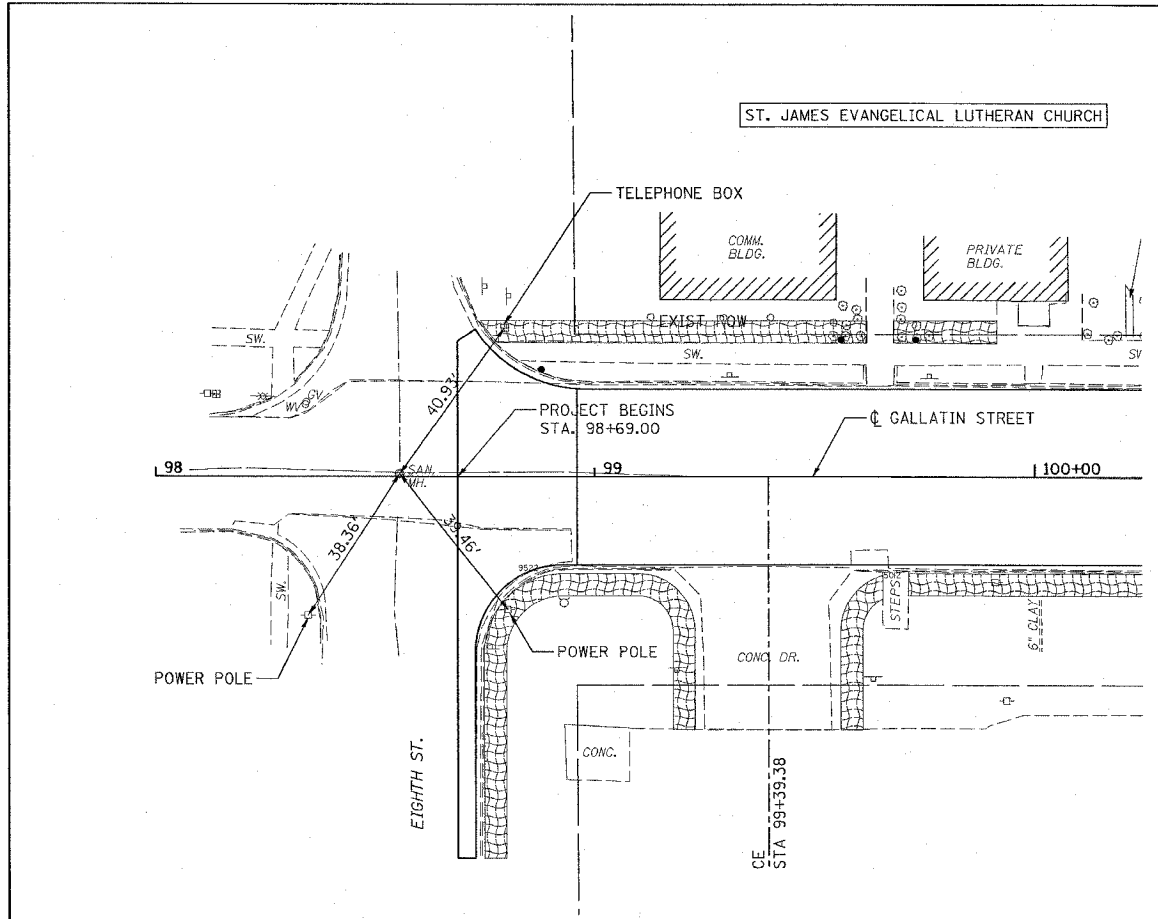
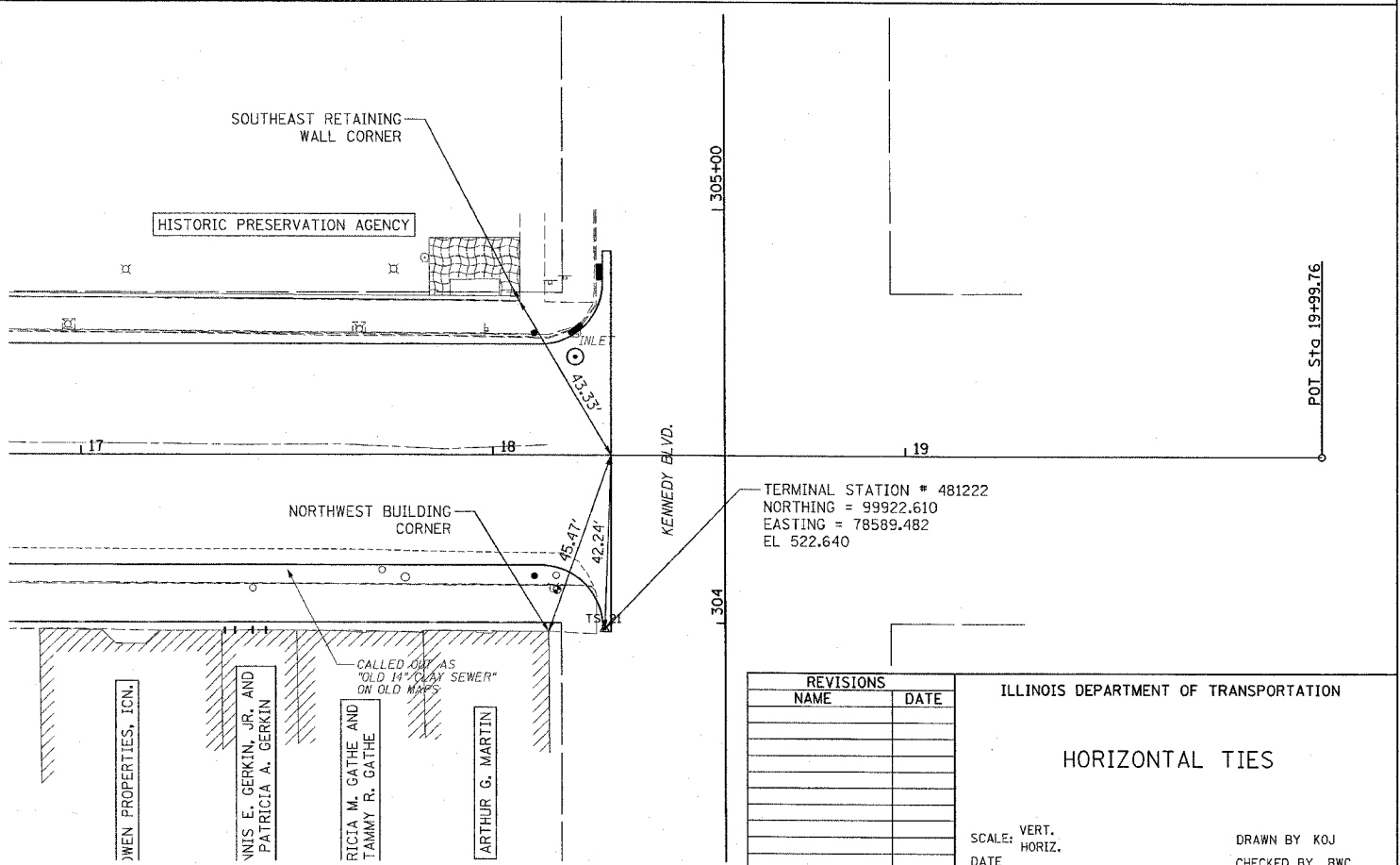
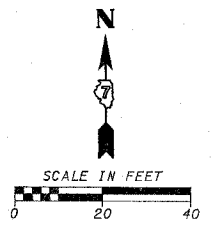
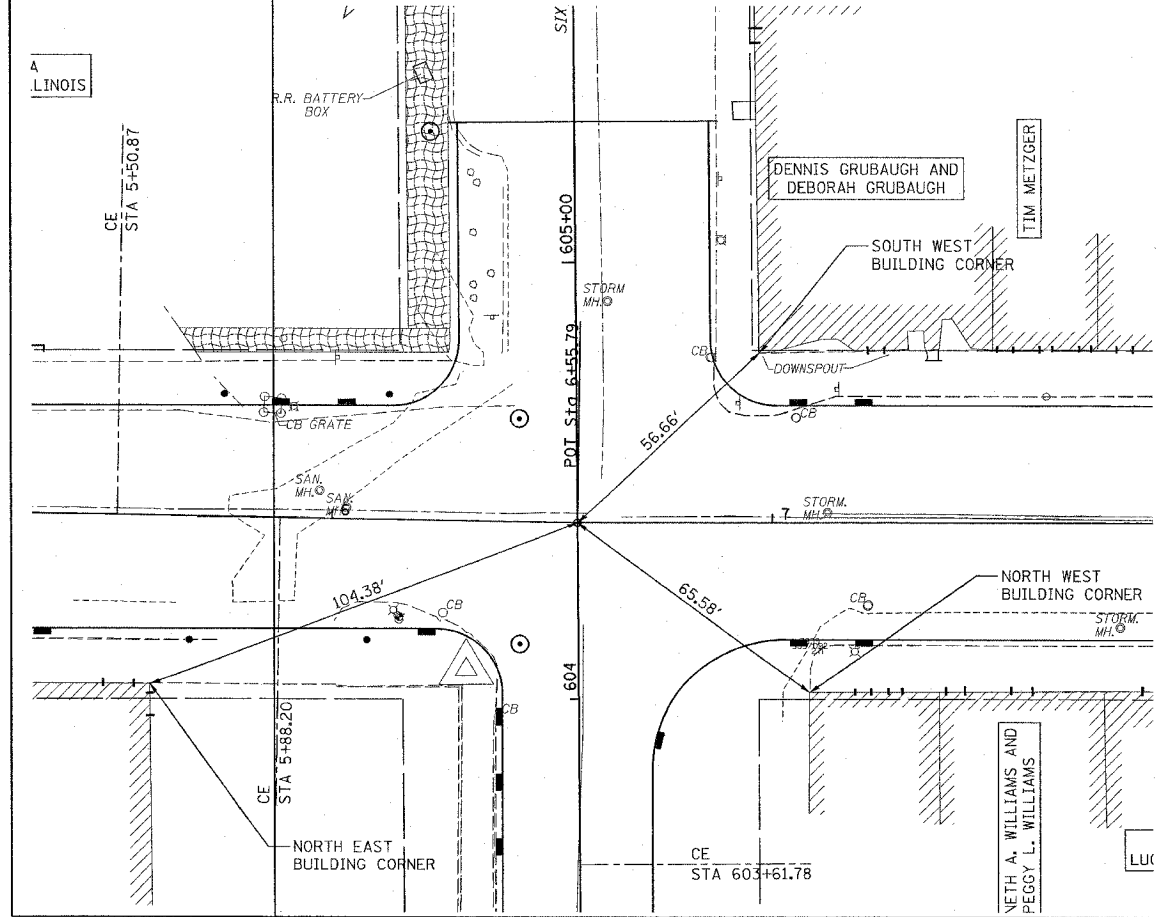
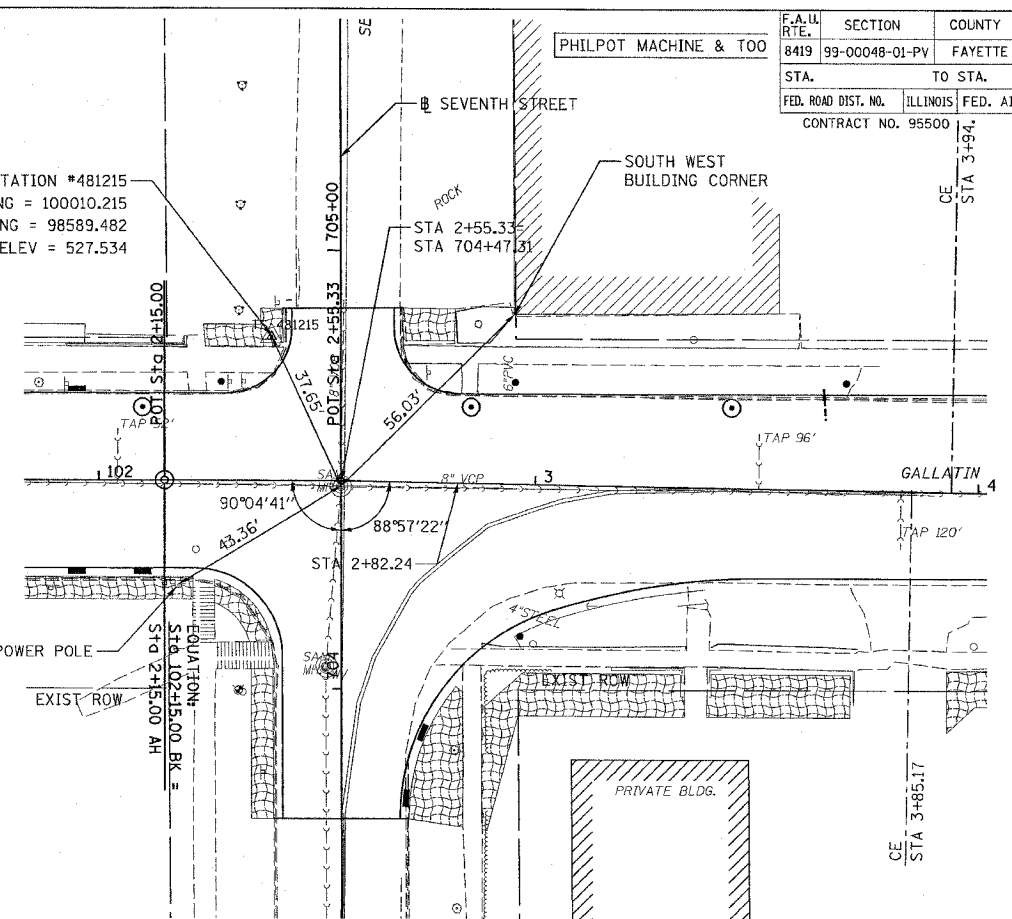


F.A.U. R.T.E.	SECTION	COUNTY	TOTAL SHEETS	SHEET NO.
8419	99-00048-01-PV	FAYETTE	142	27
STA.	TO STA.			
FED. ROAD DIST. NO.	ILLINOIS FED. AID PROJECT			
CONTRACT NO. 95500				



TRAVERSE STATION #481215
 NORTHING = 100010.215
 EASTING = 98589.482
 ELEV = 527.534



REVISIONS	
NAME	DATE

ILLINOIS DEPARTMENT OF TRANSPORTATION

HORIZONTAL TIES

SCALE: VERT. DATE
 HORIZ. DATE

DRAWN BY KOJ
 CHECKED BY BWC

CADD FILE: /4812/1618.dgn
 PLOTTED: 01/23/2007

H.M. & G. INC. 4812