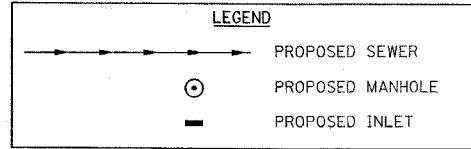
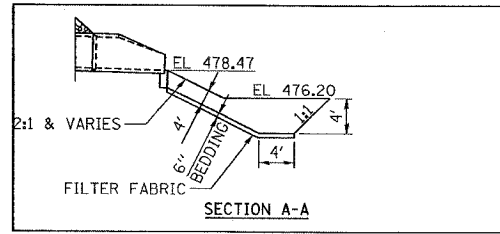
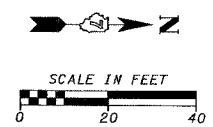
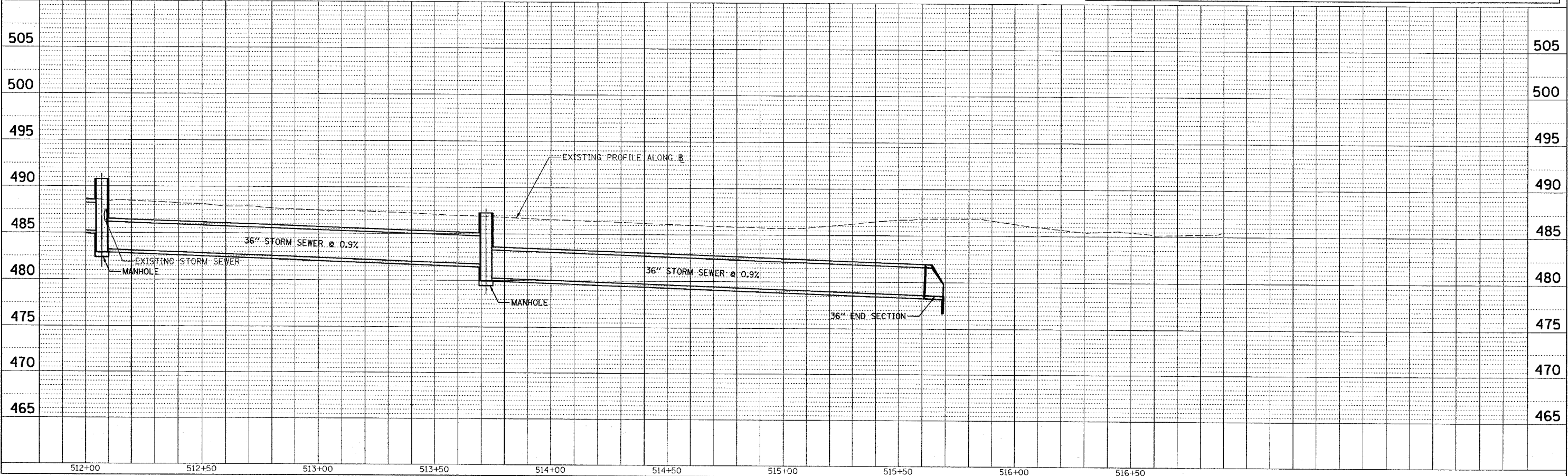
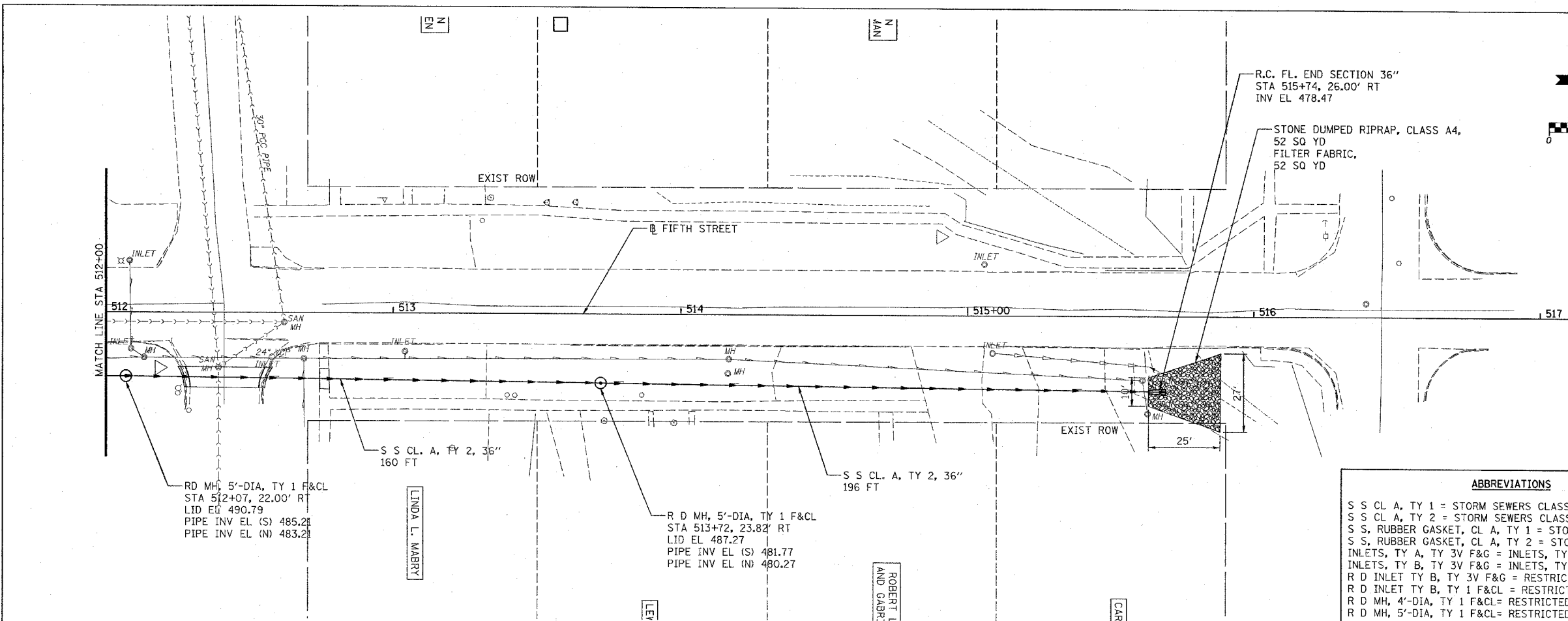


F.A.U. RTE.	SECTION	COUNTY	TOTAL SHEETS	SHEET NO.
8419	99-00048-01-PV	FAYETTE	142	56
STA.	TO STA.			
FED. ROAD DIST. NO.	ILLINOIS	FED. AID PROJECT		
CONTRACT NO. 95500				



ABBREVIATIONS

S S CL A, TY 1 = STORM SEWERS CLASS A, TYPE 1
 S S CL A, TY 2 = STORM SEWERS CLASS A, TYPE 2
 S S, RUBBER GASKET, CL A, TY 1 = STORM SEWERS, RUBBER GASKET, CLASS A, TYPE 1
 S S, RUBBER GASKET, CL A, TY 2 = STORM SEWERS, RUBBER GASKET, CLASS A, TYPE 2
 INLETS, TY A, TY 3V F&G = INLETS, TYPE A, TYPE 3V FRAME AND GRATE
 INLETS, TY B, TY 3V F&G = INLETS, TYPE B, TYPE 3V FRAME AND GRATE
 R D INLET TY B, TY 3V F&G = RESTRICTED DEPTH INLET TYPE B, TYPE 3V FRAME AND GRATE
 R D INLET TY B, TY 1 F&G = RESTRICTED DEPTH INLET TYPE B, TYPE 1 FRAME AND CLOSED LID
 R D MH, 4'-DIA, TY 1 F&CL = RESTRICTED DEPTH MANHOLE, 4'-DIAMETER, TYPE 1 FRAME AND CLOSED LID
 R D MH, 5'-DIA, TY 1 F&CL = RESTRICTED DEPTH MANHOLE, 5'-DIAMETER, TYPE 1 FRAME AND CLOSED LID



PLAN	DESIGNED	DATE
	BY	
	CHECKED	
	DATE	
	NO.	

PROFILE	DESIGNED	DATE
	BY	
	CHECKED	
	DATE	
	NO.	

CADD FILE: /4812/ssa/Fifth_03.dgn
 PLOTTED: 01/23/2007