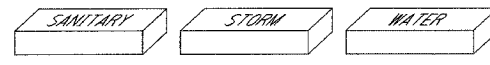


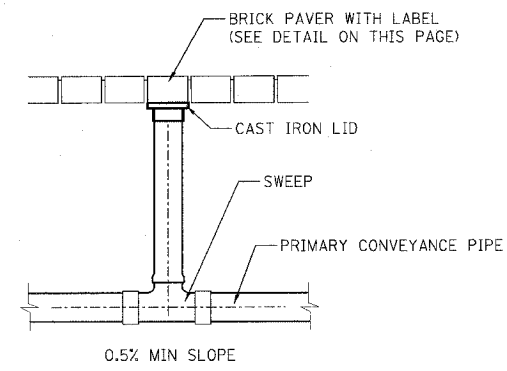
F.A.U. RTE.	SECTION	COUNTY	TOTAL SHEETS	SHEET NO.
8419	99-00048-01-PV	FAYETTE	142	91
STA.	TO STA.			
FED. ROAD DIST. NO.	ILLINOIS	FED. AID PROJECT		
CONTRACT NO. 95500				



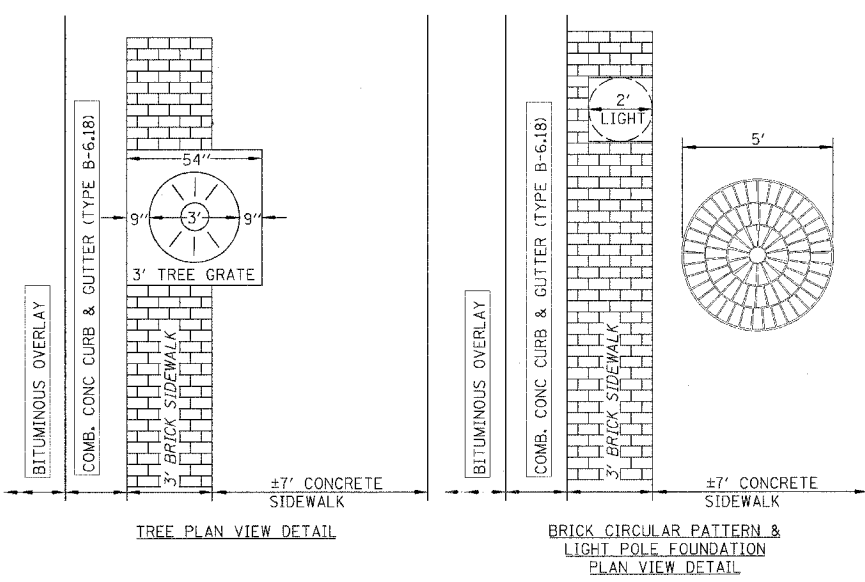
NOTE:
BRICK PAVERS SHALL BE EQUAL IN APPEARANCE TO HESSON RED #1 AS CONSTRUCTED IN LINCOLN PARK. SAID PAVERS WERE OBTAINED FROM HEARTLAND LANDSCAPING, INC. 406 EAST CUMBERLAND ROAD, ALTAMONT, IL 62411.

PAVERS LOCATED OVER ACCESSIBLE WATER VALVES, RISER CONNECTIONS, AND CLEANOUTS SHALL BE APPROPRIATELY ENGRAVED / STAMPED AS SHOWN. THE CONTRACTOR SHALL PROVIDE A SAMPLE OF MARKED AND REGULAR PAVERS FOR APPROVAL.

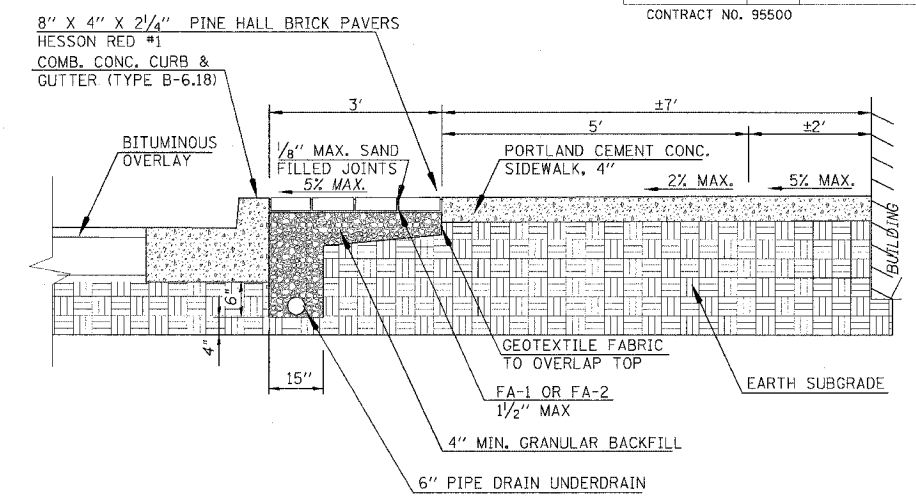
BRICK PAVER DETAILS
NOT TO SCALE



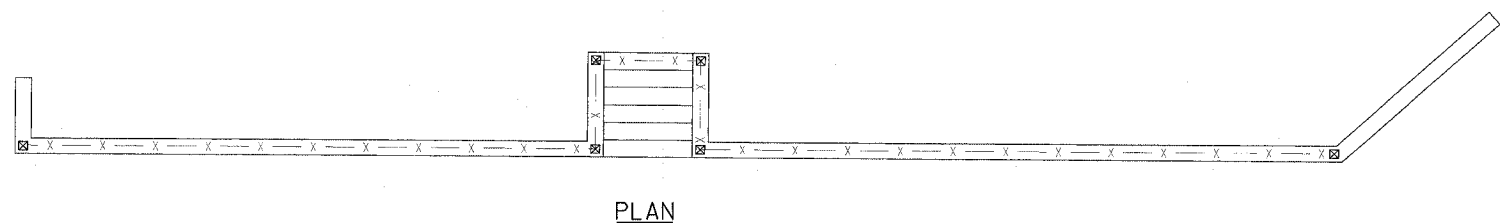
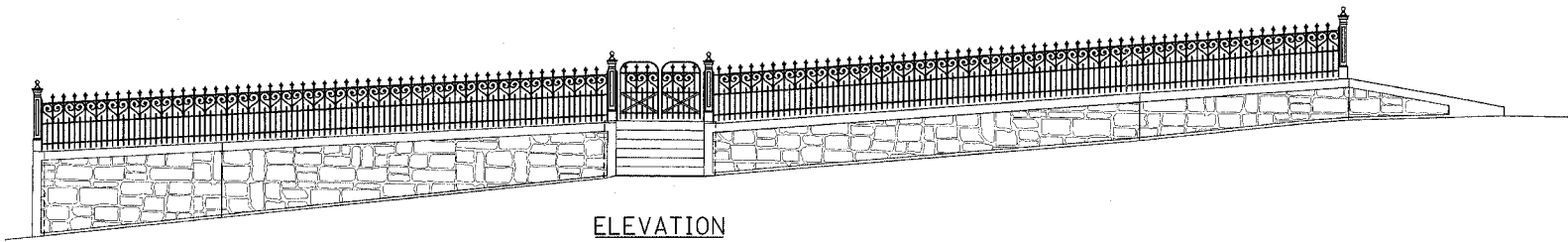
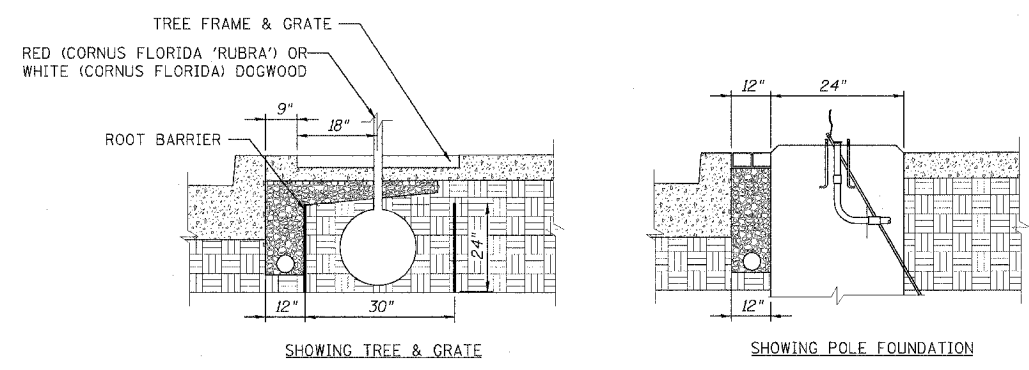
RISER CONNECTION DETAIL
NOT TO SCALE



SIDEWALK TYPICAL PLAN DETAIL
NOT TO SCALE

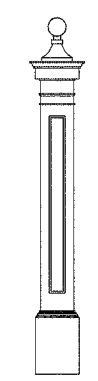


SIDEWALK TYPICAL SECTION DETAIL
NOT TO SCALE



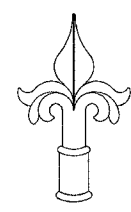
NOTE:
STEWART IRON WORKS - 37 INCH SCROLL ORNAMENTED FENCE, DESIGN NUMBER 101S, 1/2 INCH SQUARE PICKETS, 4 INCH CENTER TO CENTER PICKET SPACING, 3 CHANNEL RAILS (1-1/4" x 1/2"), MATCHING GATES - STYLE # 11, 1 INCH SOLID TUBULAR LINE POSTS (OR EQUIVALENT APPROVED BY THE CITY)

ORNAMENTAL METAL FENCE ON RETAINING WALL
NOT TO SCALE



NOTE:
STEWART IRON WORKS ORNAMENTAL END, CORNER AND GATE POSTS STYLE #25 (OR EQUIVALENT APPROVED BY THE CITY)

END, CORNER AND GATE POSTS
NOT TO SCALE



NOTE:
STEWART IRON WORKS ORNAMENTAL PICKET TOP - STYLE E FOR 1/2" SQUARE PICKETS (OR EQUIVALENT APPROVED BY THE CITY)

ORNAMENTAL PICKET TOPS
NOT TO SCALE

REVISIONS	
NAME	DATE

ILLINOIS DEPARTMENT OF TRANSPORTATION

VANDALIA - GALLATIN STREET DETAILS

SCALE: VERT. DRAWN BY KOJ
 HORIZ. CHECKED BY BWC
 DATE

CADD FILE: 4812/DH_Laboratory_2.dgn
PLOTTED: 3/5/2007

H.M. & G. INC. 4812