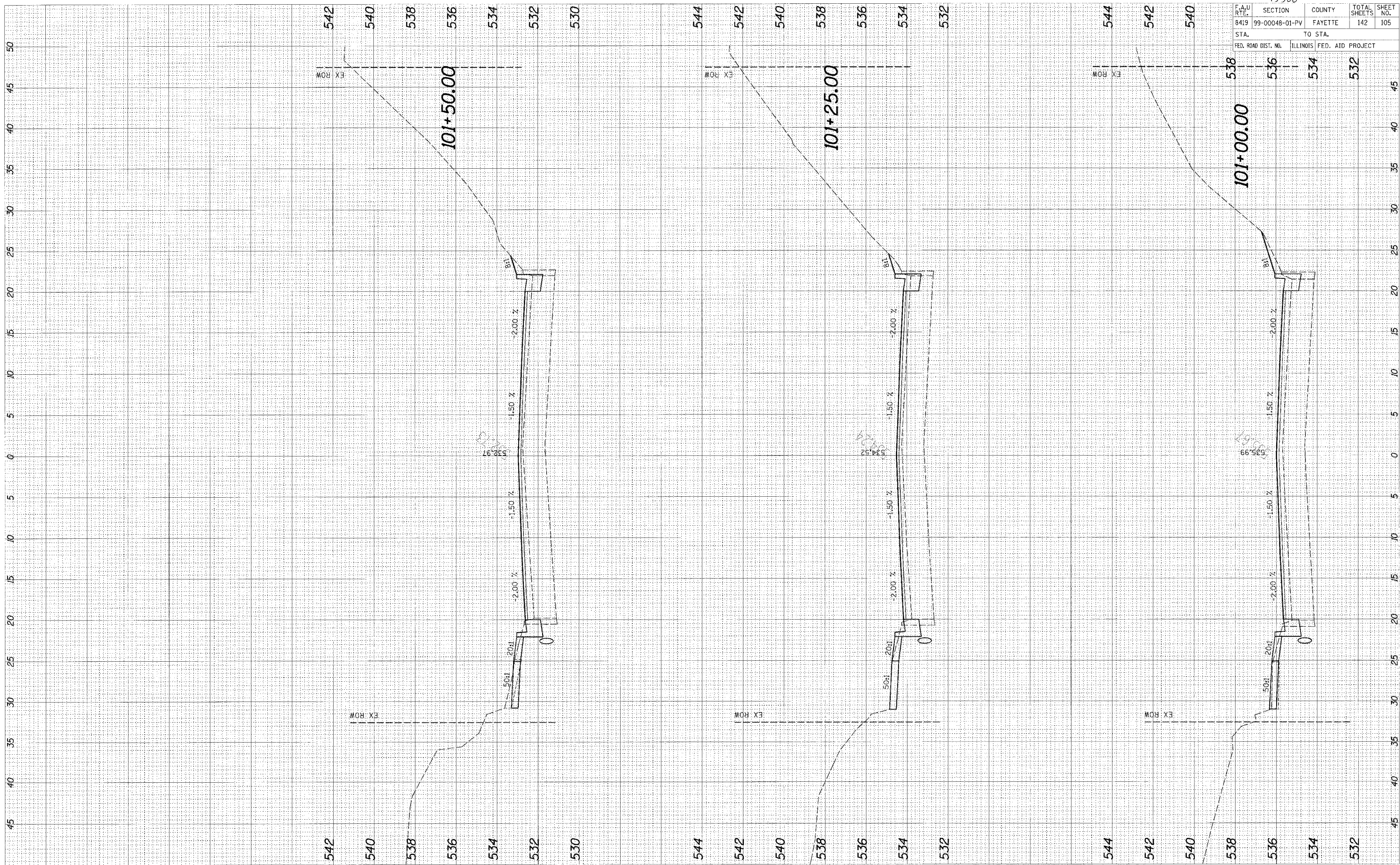


CADD FILE: /4812/ks_GoldwinF.dgn
 PLOTTED: 01/23/2007

ORIGINAL SURVEY
 NOTE BOOK
 BY: [Signature]

FINAL SURVEY
 NOTE BOOK
 BY: [Signature]



95500

F.A.U. RT.	SECTION	COUNTY	TOTAL SHEETS	SHEET NO.
8419	99-00048-01-PV	FAYETTE	142	105
STA. 538 TO STA. 532		ILLINOIS FED. AID PROJECT		