

F.A.U. ROUTE	SECTION	COUNTY	TOTAL SHEETS	SHEET NUMBER
9415	02-00055-00-RP	RANDOLPH	35	8
CITY OF CHESTER			PROJECT NO. M-5014(008)	
CONTRACT NO. 97274			JOB NO. C98-304-06	
FEDERAL AID PROJECT				

CURVE NO.3 DATA
 $\Delta = 37^{\circ}50'00''$ P.C. - 21+34.52
 $R = 350.74'$ P.I. - 22+54.72
 $L = 231.60'$ P.T. - 23+66.12
 $T = 120.20'$
 S.E. - 0.06 FT./FT. TO BE ATTAINED
 FROM STA. 21+13.56 TO STA. 21+76.52
 AND FROM STA. 23+24.12 TO STA. 24+50.12

CURVE NO.4 DATA
 $\Delta = 01^{\circ}03'37.19''$ P.C. - 25+69.19
 $R = 2023.12'$ P.I. - 27+56.32
 $L = 374.25'$ P.T. - 29+43.44
 $T = 187.13'$

OUTLOT 120

EXISTING 15"/18" VCP UNDER HOUSE, CARPORT AND DRIVEWAY. CONNECTS TO EXISTING 24"/30" VCP UNDER SIDEWALK. EXACT LOCATION OF INTERCONNECT IS UNKNOWN. CONTRACTOR SHALL TAKE PRECAUTION WHEN REMOVING 24"/30" VCP IN THIS AREA TO KEEP DAMAGE OF THE EXISTING 15"/18" VCP TO A MINIMUM. CONTRACTOR SHALL CONNECT EXISTING 15"/18" VCP TO NEW STORM SEWER SYSTEM. SEE SPECIAL PROVISIONS.

THIRD STREET

NO. 119

24"/30" VCP TO BE REMOVED - 577 FT. TRENCH BACKFILL - 430 CU. YDS. LOCATION OF CHANGE FROM 30" TO 24" VCP IS NOT KNOWN. SEE SPECIAL PROVISIONS

INLET TO BE REMOVED - 1 EACH (SEE SHEET 5 FOR DETAILS ON CONNECTING EXISTING BOX CULVERT TO NEW INLET.)

P.I. STA. 22+54.72
 30"X1/2" STEEL PIN SET
 (BIT. CONC.) BUTT JOINT

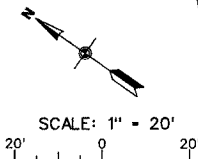
NO. 119

BLOCK 33

OUTLOT 120

HARRISON STREET

ALL EXISTING PLUGGED INLETS LOCATED IN EXISTING CONCRETE PAVEMENT/CONCRETE GUTTER SHALL BE REMOVED AND DISPOSED OF BY THE CONTRACTOR. COST OF THE WORK SHALL BE INCLUDED IN THE PAY ITEM FOR PAVEMENT REMOVAL.



BENCHMARKS

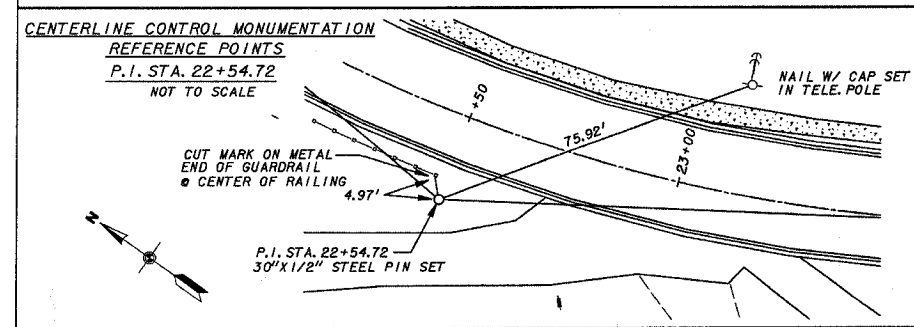
- B.M. NO.3 - 2-600 NAILS SET IN WEST SIDE LIGHT POLE ON WEST SIDE OF BUENA VISTA ST. ±250' SOUTH OF INTER. McFERRON ST. AND BUENA VISTA ST. CENTERLINE OF IMPROVEMENT STA. 23+60.20 RT. ELEV. - 463.73
- B.M. NO.4 - 2-600 NAILS SET IN WEST SIDE UTILITY POLE ON EAST SIDE OF BUENA VISTA ST. ±75' SOUTH OF INTER. MADISON ST. AND BUENA VISTA ST. CENTERLINE OF IMPROVEMENT STA. 25+75.25 LT. ELEV. - 444.63

LEGEND

- [Pattern] - CONCRETE ROADWAY PAVEMENT REMOVAL
- [Pattern] - CONCRETE DRIVEWAY PAVEMENT REMOVAL
- [Pattern] - PREPARATION OF BASE
- [Pattern] - HOT-MIX ASPHALT SURFACE REMOVAL (BUTT JOINT)
- [Pattern] - CONCRETE CURB & GUTTER REMOVAL
- [Pattern] - PCC SIDEWALK REMOVAL
- [Pattern] - SMALL TREES/BRUSH REMOVAL
- [Pattern] - GUARDRAIL REMOVAL

LEGEND

- [Symbol] - POWER POLE
- [Symbol] - POWER / TELEPHONE POLE
- [Symbol] - TELEPHONE POLE
- [Symbol] - SANITARY SEWER & MANHOLE
- [Symbol] - FIRE HYDRANT
- [Symbol] - WATER VALVE
- [Symbol] - WATER METER
- [Symbol] - WATER LINE
- [Symbol] - GAS LINE
- [Symbol] - GAS VALVE
- [Symbol] - GAS METER
- [Symbol] - SIGN
- [Symbol] - MAILBOX
- [Symbol] - RIGHT-OF-WAY LINE
- [Symbol] - PROPERTY LINE
- [Symbol] - GUARDRAIL
- [Symbol] - TREE LINE
- [Symbol] - FENCE LINE
- [Symbol] - CONC. R.O.W. MARKER
- [Symbol] - REINFORCED CONCRETE PIPE CULVERT
- [Symbol] - CORRUGATED METAL PIPE CULVERT
- [Symbol] - TOP OF CASTING
- [Symbol] - INVERT
- [Symbol] - FLOWLINE
- [Symbol] - CURB FLAG
- [Symbol] - BACK OF CURB



CITY OF CHESTER
 RANDOLPH COUNTY, ILLINOIS
 IMPROVEMENT TO BUENA VISTA STREET
 EXISTING SITE PLAN REMOVAL PLAN & CENTERLINE CONTROL MONUMENTATION - STA. 21+50 TO STA. 27+50