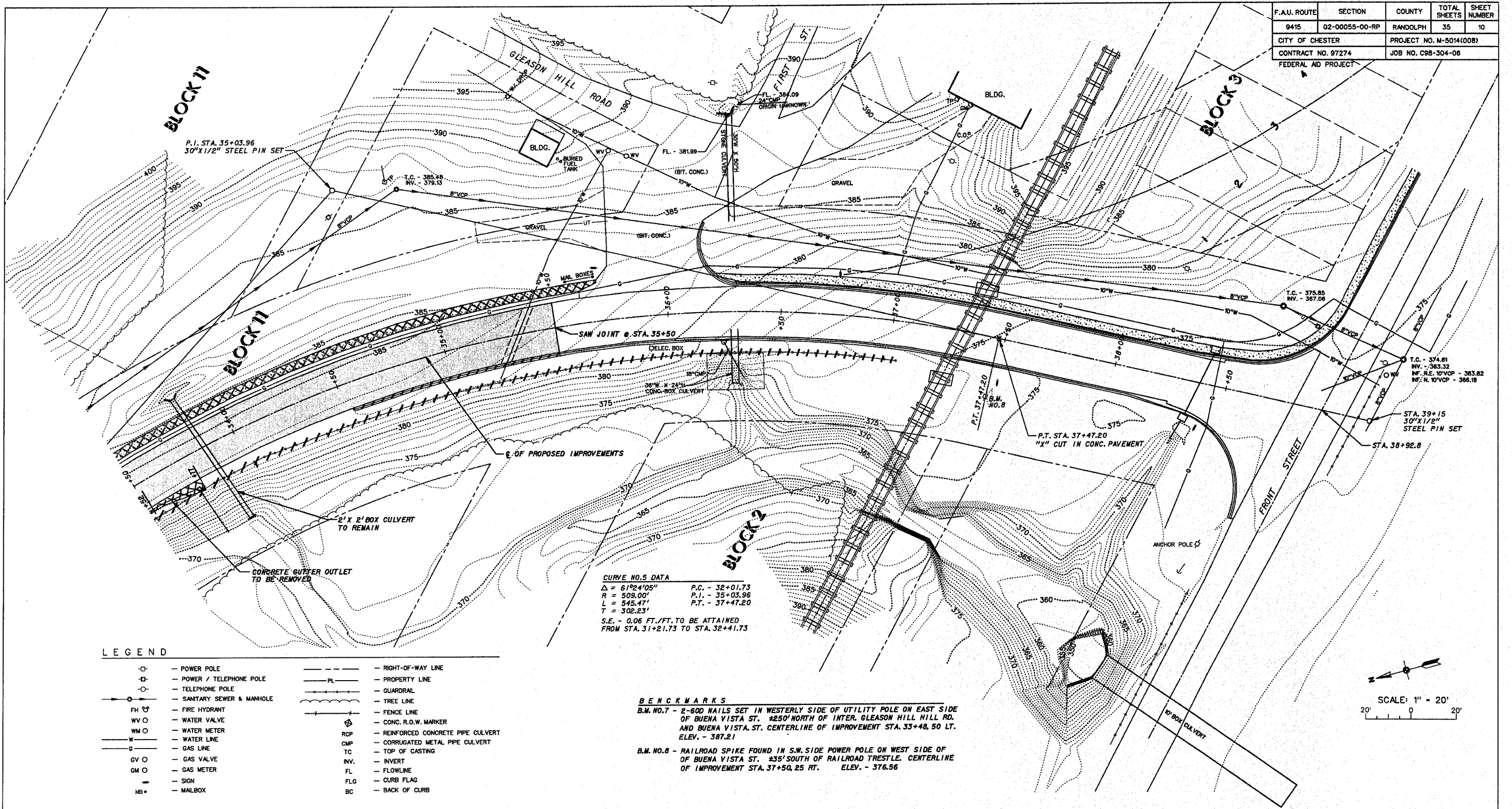


F.A.U. ROUTE	SECTION	COUNTY	TOTAL SHEETS	SHEET NUMBER
9415	02-00055-00-RP	RANDOLPH	35	10
CITY OF CHESTER		PROJECT NO. M-5014(008)		
CONTRACT NO. 97274		JOB NO. C98-304-06		
FEDERAL AID PROJECT				

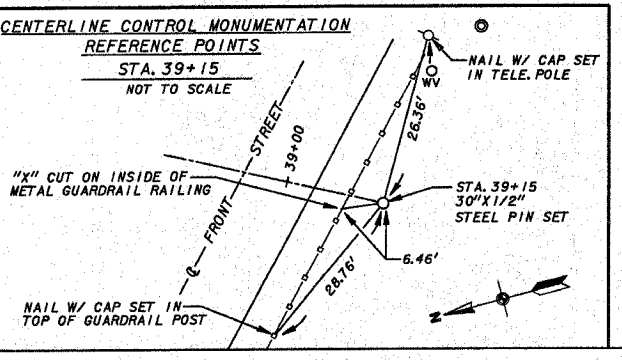
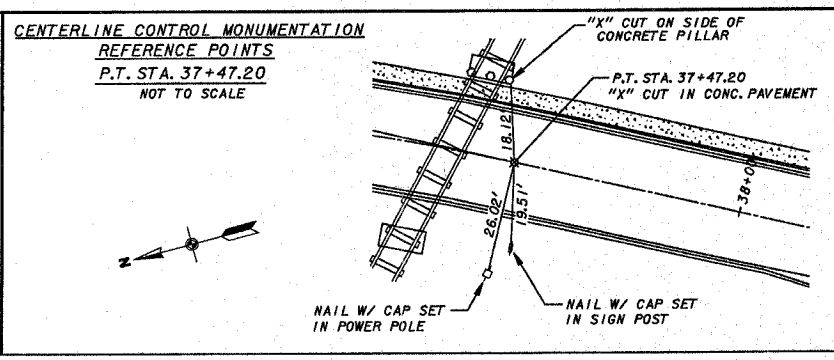
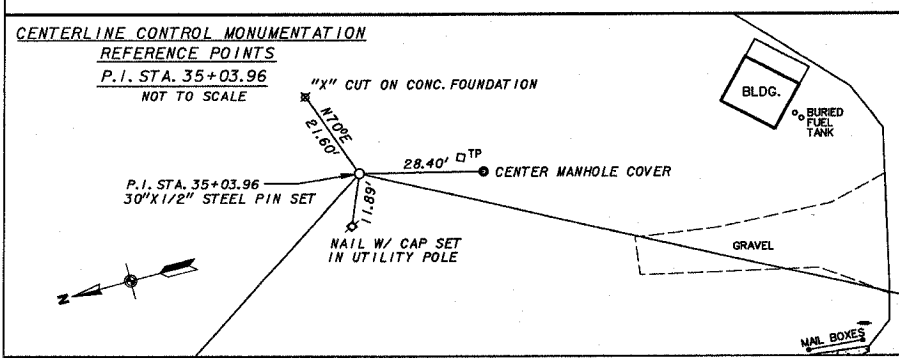
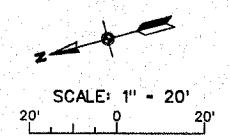


CURVE NO. 5 DATA
 $\Delta = 61^{\circ}24'05''$ P.C. - 32+01.73
 $R = 509.00'$ P.I. - 35+03.96
 $L = 545.47'$ P.T. - 37+47.20
 $T = 302.23'$
 S.E. - 0.06 FT./FT. TO BE ATTAINED
 FROM STA. 31+21.73 TO STA. 32+41.73

BENCHMARKS
 B.M. NO. 7 - 2-600 NAILS SET IN WESTERLY SIDE OF UTILITY POLE ON EAST SIDE OF BUENA VISTA ST. $\pm 250'$ NORTH OF INTER. GLEASON HILL HILL RD. AND BUENA VISTA ST. CENTERLINE OF IMPROVEMENT STA. 33+48.50 LT. ELEV. - 387.21
 B.M. NO. 8 - RAILROAD SPIKE FOUND IN S.W. SIDE POWER POLE ON WEST SIDE OF OF BUENA VISTA ST. $\pm 35'$ SOUTH OF RAILROAD TRESTLE. CENTERLINE OF IMPROVEMENT STA. 37+50.25 RT. ELEV. - 376.56

LEGEND

□	POWER POLE	---	RIGHT-OF-WAY LINE
□	POWER / TELEPHONE POLE	---	PROPERTY LINE
○	TELEPHONE POLE	---	GUARDRAIL
○	SANITARY SEWER & MANHOLE	---	TREE LINE
FH	FIRE HYDRANT	---	FENCE LINE
WV	WATER VALVE	---	CONC. R.O.W. MARKER
WM	WATER METER	---	REINFORCED CONCRETE PIPE CULVERT
W	WATER LINE	---	CORRUGATED METAL PIPE CULVERT
G	GAS LINE	---	TOP OF CASTING
GV	GAS VALVE	---	INVERT
GM	GAS METER	---	FLOWLINE
S	SIGN	---	CURB FLAG
MB	MALBOX	---	BACK OF CURB



LEGEND

▨	CONCRETE ROADWAY PAVEMENT REMOVAL
▩	CONCRETE DRIVEWAY PAVEMENT REMOVAL
▧	PREPARATION OF BASE
▦	HOT-MIX ASPHALT SURFACE REMOVAL (BUTT JOINT)
▤	CONCRETE CURB & GUTTER REMOVAL
▥	PCC SIDEWALK REMOVAL
▣	SMALL TREES/BRUSH REMOVAL
---	GUARDRAIL REMOVAL

CITY OF CHESTER
 RANDOLPH COUNTY, ILLINOIS
 IMPROVEMENT TO BUENA VISTA STREET
 EXISTING SITE PLAN, REMOVAL PLAN & CENTERLINE CONTROL MONUMENTATION - STA. 33+50 TO STA. 37+05