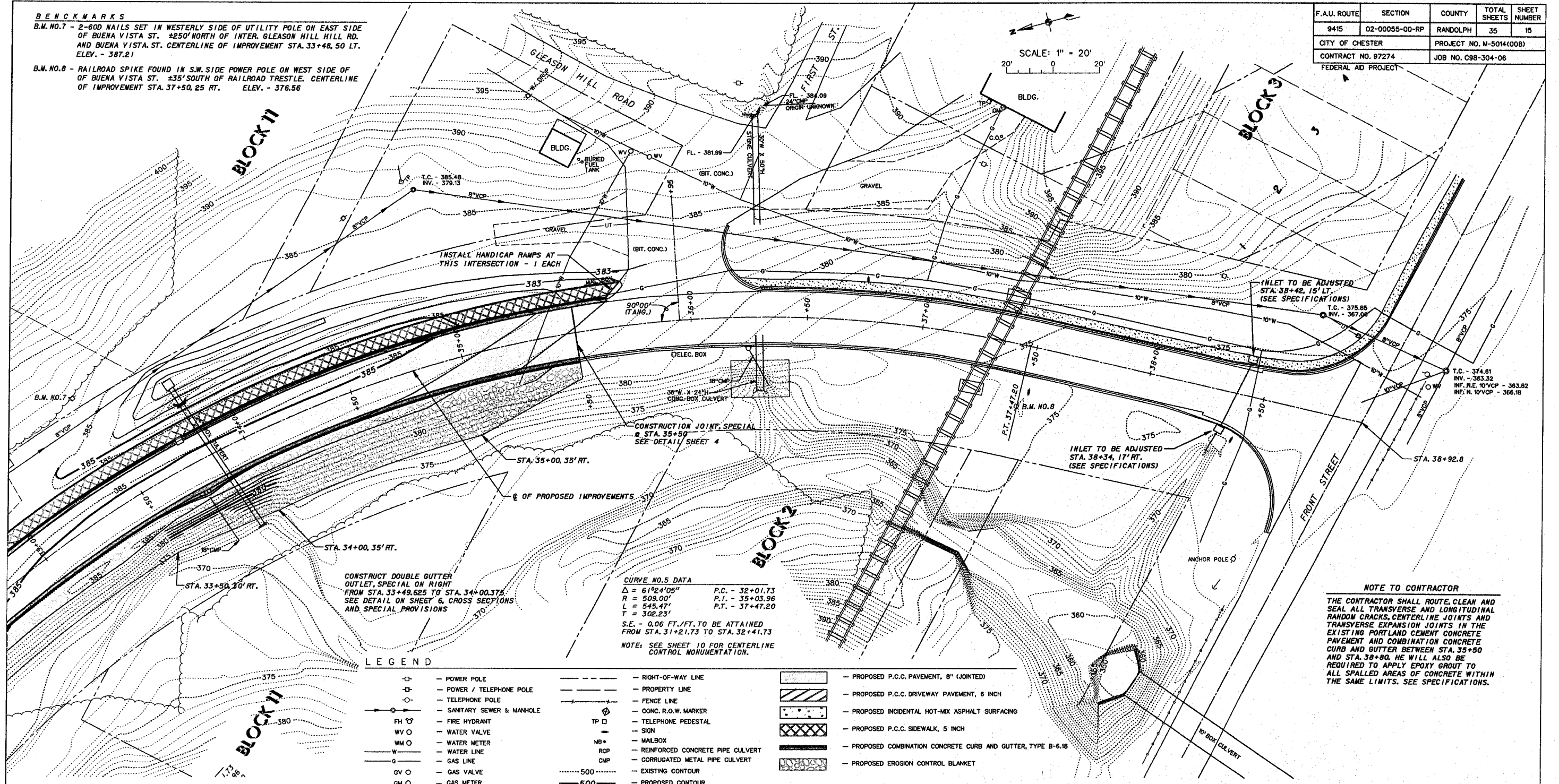


BENCHMARKS
 B.M. NO. 7 - 2-60D NAILS SET IN WESTERLY SIDE OF UTILITY POLE ON EAST SIDE OF BUENA VISTA ST. ±250' NORTH OF INTER. GLEASON HILL HILL RD. AND BUENA VISTA ST. CENTERLINE OF IMPROVEMENT STA. 33+48.50 LT. ELEV. - 387.21
 B.M. NO. 8 - RAILROAD SPIKE FOUND IN S.W. SIDE POWER POLE ON WEST SIDE OF BUENA VISTA ST. ±35' SOUTH OF RAILROAD TRESTLE. CENTERLINE OF IMPROVEMENT STA. 37+50.25 RT. ELEV. - 376.56

F.A.U. ROUTE	SECTION	COUNTY	TOTAL SHEETS	SHEET NUMBER
9415	02-00055-00-RP	RANDOLPH	35	15
CITY OF CHESTER		PROJECT NO. M-5014(008)		
CONTRACT NO. 97274		JOB NO. C98-304-06		
FEDERAL AID PROJECT				

SCALE: 1" = 20'
 20' 0 20'



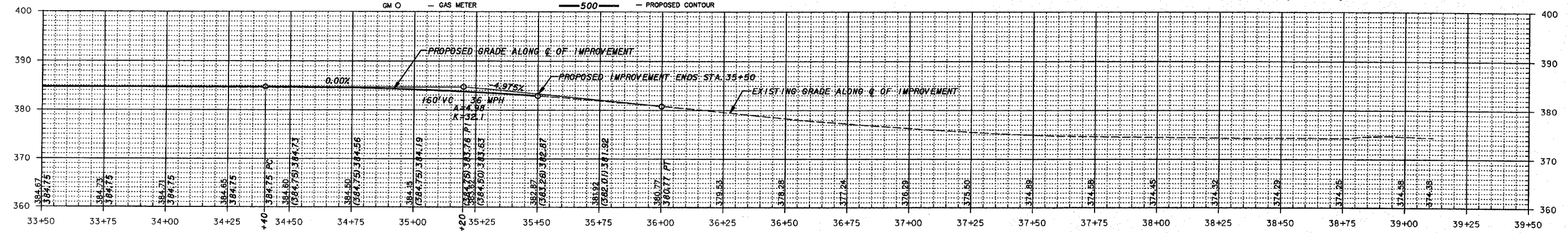
CURVE NO. 5 DATA

$\Delta = 61^{\circ}24'05''$	P.C. - 32+01.73
$R = 503.00'$	P.L. - 35+03.96
$L = 545.47'$	P.T. - 37+47.20
$T = 302.23'$	
S.E. - 0.06 FT./FT. TO BE ATTAINED FROM STA. 31+21.73 TO STA. 32+41.73	
NOTE: SEE SHEET 10 FOR CENTERLINE CONTROL MONUMENTATION.	

LEGEND

- | | | | | | |
|------|--------------------------|------|----------------------------------|-----------|--|
| —○— | POWER POLE | --- | RIGHT-OF-WAY LINE | [Pattern] | PROPOSED P.C.C. PAVEMENT, 8" (JOINTED) |
| —□— | POWER / TELEPHONE POLE | --- | PROPERTY LINE | [Pattern] | PROPOSED P.C.C. DRIVEWAY PAVEMENT, 6 INCH |
| —○— | TELEPHONE POLE | --- | FENCE LINE | [Pattern] | PROPOSED INCIDENTAL HOT-MIX ASPHALT SURFACING |
| —○— | SANITARY SEWER & MANHOLE | --- | CONC. R.O.W. MARKER | [Pattern] | PROPOSED P.C.C. SIDEWALK, 5 INCH |
| FH ○ | FIRE HYDRANT | TP □ | TELEPHONE PEDESTAL | [Pattern] | PROPOSED COMBINATION CONCRETE CURB AND GUTTER, TYPE B-6.18 |
| WV ○ | WATER VALVE | MB + | MAILBOX | [Pattern] | PROPOSED EROSION CONTROL BLANKET |
| WM ○ | WATER METER | RCP | REINFORCED CONCRETE PIPE CULVERT | | |
| W — | WATER LINE | CMP | CORRUGATED METAL PIPE CULVERT | | |
| G — | GAS LINE | --- | EXISTING CONTOUR | | |
| GV ○ | GAS VALVE | --- | PROPOSED CONTOUR | | |
| GM ○ | GAS METER | | | | |

NOTE TO CONTRACTOR
 THE CONTRACTOR SHALL ROUTE, CLEAN AND SEAL ALL TRANSVERSE AND LONGITUDINAL RANDOM CRACKS, CENTERLINE JOINTS AND TRANSVERSE EXPANSION JOINTS IN THE EXISTING PORTLAND CEMENT CONCRETE PAVEMENT AND COMBINATION CONCRETE CURB AND GUTTER BETWEEN STA. 35+50 AND STA. 38+80. HE WILL ALSO BE REQUIRED TO APPLY EPOXY GROUT TO ALL SPALLED AREAS OF CONCRETE WITHIN THE SAME LIMITS. SEE SPECIFICATIONS.



NOTE TO CONTRACTOR
 SEE CROSS SECTIONS FOR PROPOSED ELEVATIONS OF ROADWAY, CURB & GUTTERS, DRIVEWAYS AND SIDEWALKS.

CITY OF CHESTER
RANDOLPH COUNTY, ILLINOIS
IMPROVEMENT TO BUENA VISTA STREET
PLAN AND PROFILE STA. 33-50 TO STA. 35-50