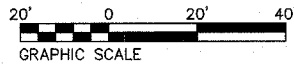
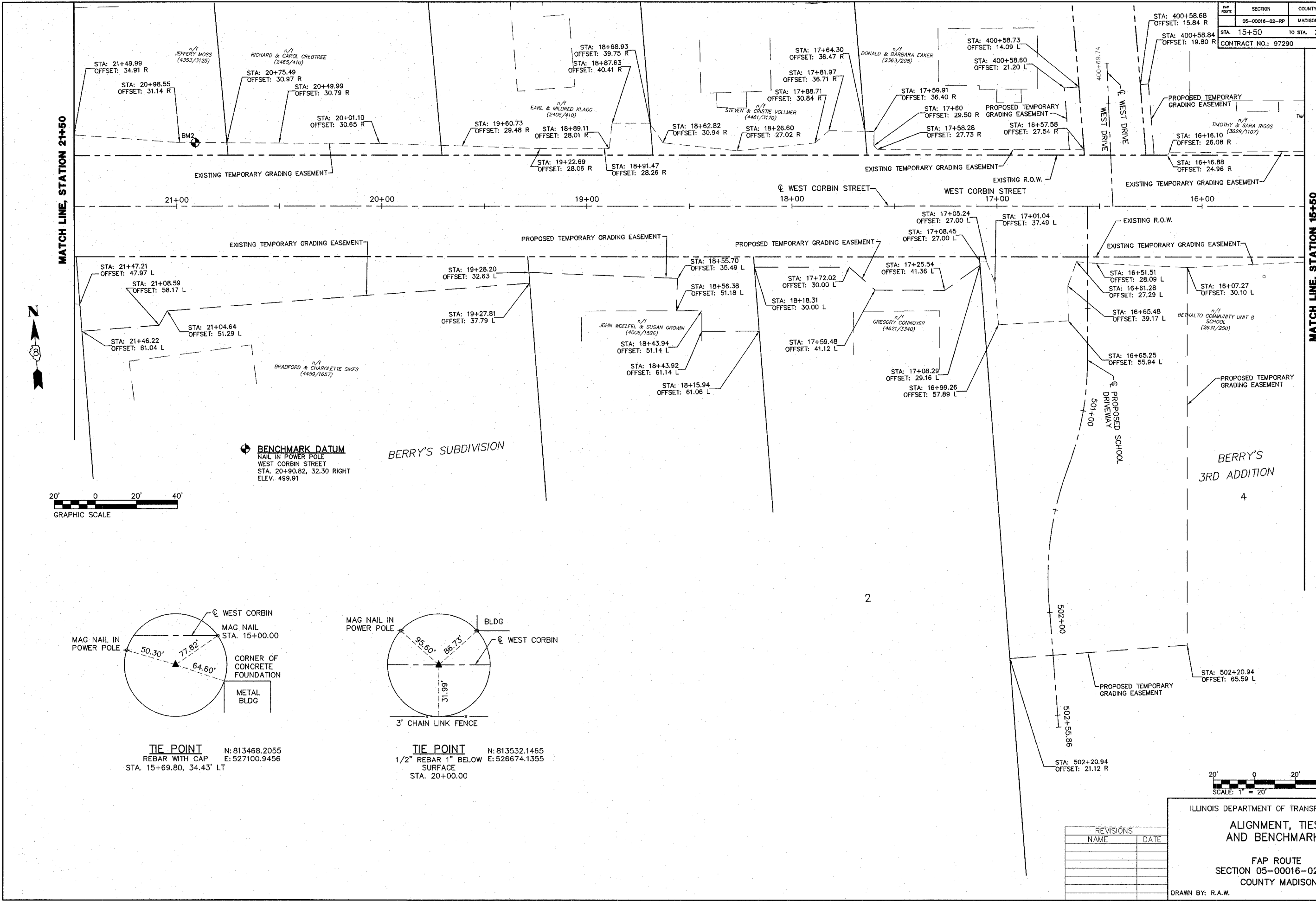
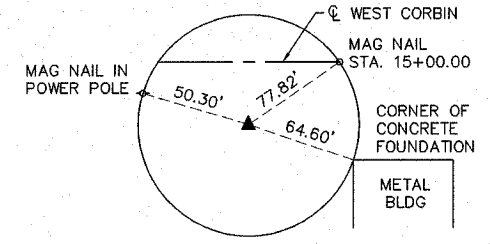


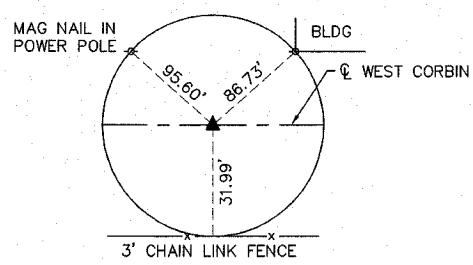
FAP ROUTE	SECTION	COUNTY	TOTAL SHEETS	SHEET NO.
05-00016-02-RP	15+50 TO STA. 21+50	MADISON	42	6
CONTRACT NO.: 97290				



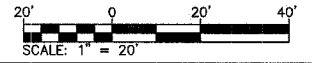
**BENCHMARK DATUM**  
 NAIL IN POWER POLE  
 WEST CORBIN STREET  
 STA. 20+90.82, 32.30 RIGHT  
 ELEV. 499.91



**TIE POINT**  
 REBAR WITH CAP N: 813468.2055  
 E: 527100.9456  
 STA. 15+69.80, 34.43' LT



**TIE POINT**  
 1/2" REBAR 1" BELOW SURFACE N: 813532.1465  
 E: 526674.1355  
 STA. 20+00.00



REVISIONS	
NAME	DATE

ILLINOIS DEPARTMENT OF TRANSPORTATION  
**ALIGNMENT, TIES,  
 AND BENCHMARKS**  
 FAP ROUTE  
 SECTION 05-00016-02-RP  
 COUNTY MADISON  
 DRAWN BY: R.A.W.