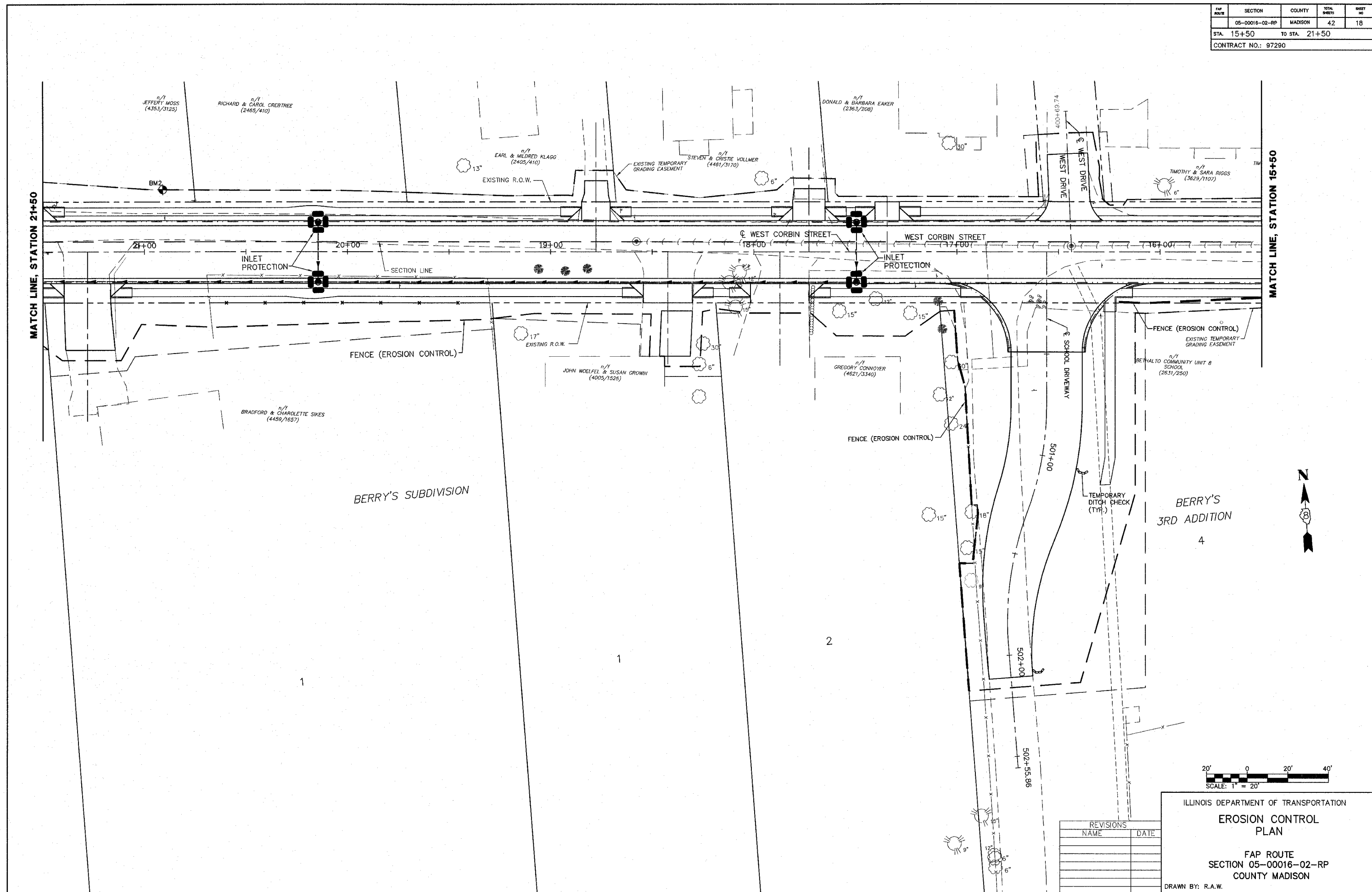


FAP ROUTE	SECTION	COUNTY	TOTAL SHEETS	SHEET NO.
05-00016-02-RP	05-00016-02-RP	MADISON	42	18
STA. 15+50		TO STA. 21+50		
CONTRACT NO.: 97290				



REVISIONS	
NAME	DATE

ILLINOIS DEPARTMENT OF TRANSPORTATION
EROSION CONTROL PLAN
 FAP ROUTE
 SECTION 05-00016-02-RP
 COUNTY MADISON
 DRAWN BY: R.A.W.