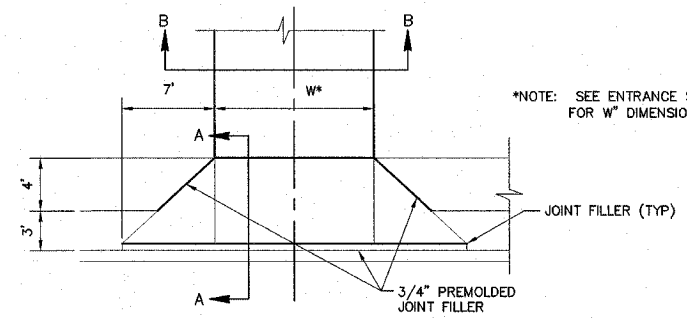
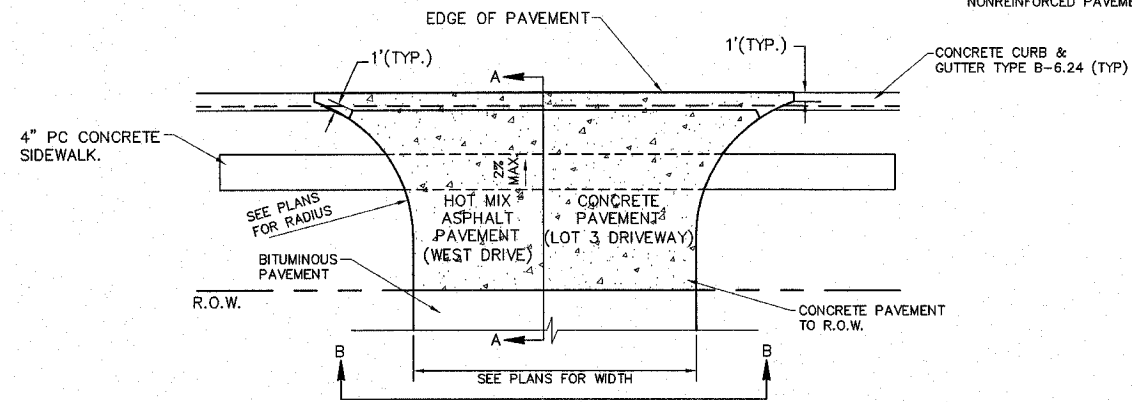


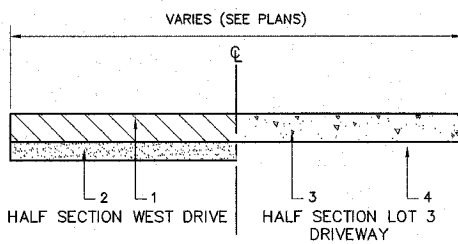
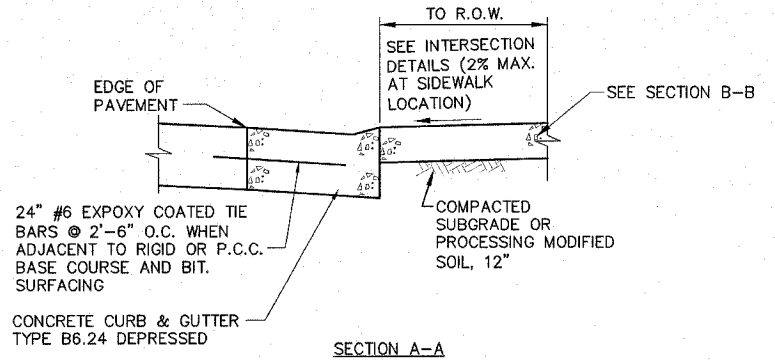
SECTION	COUNTY	TOTAL SHEETS	SHEET NO.
05-00016-02-RP	MADISON	42	23
STA. TO STA.			
CONTRACT NO.: 97290			

NOTE: SEE STANDARD BLR-10 FOR PLACEMENT OF JOINTS IN NONREINFORCED PAVEMENT



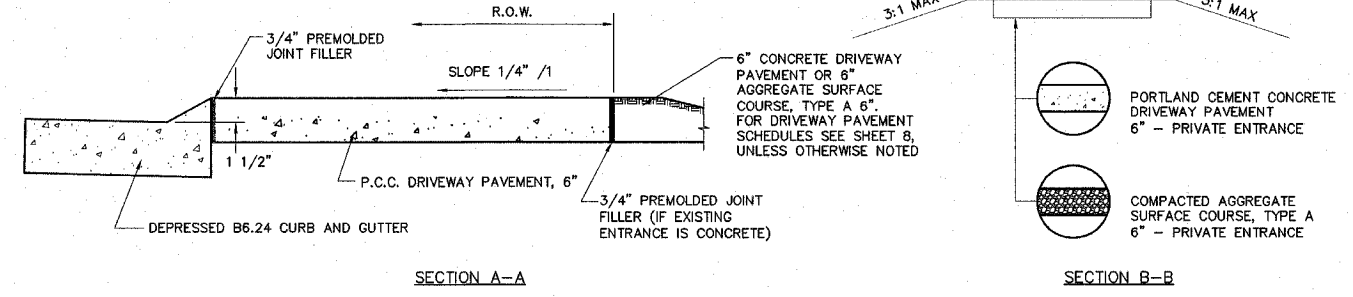
NOTE: SEE ENTRANCE SCHEDULE FOR W DIMENSION

PLAN VIEW

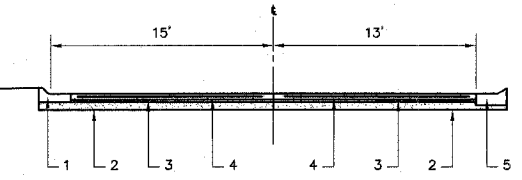
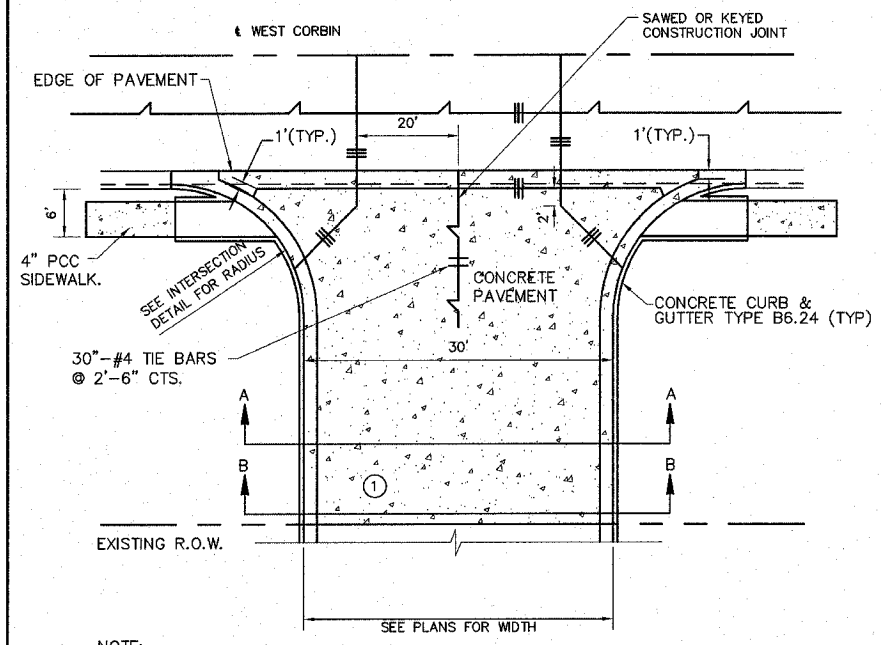


SECTION B-B (OFF R.O.W.)

- LEGEND WEST DRIVE
- HOT MIX ASPHALT PAVEMENT (FULL DEPTH 10"), 2" SURFACE OVER 8" BINDER
 - PROCESSING MODIFIED SOILS, 12"
- LEGEND LOT B DRIVEWAY
- CONCRETE DRIVEWAY PAVEMENT, 6"
 - COMPACTED SUBGRADE



DETAIL OF WEST DRIVE AND LOT 3 DRIVEWAY (STA. 11+78.82 AND 12+32.24)
NOT TO SCALE

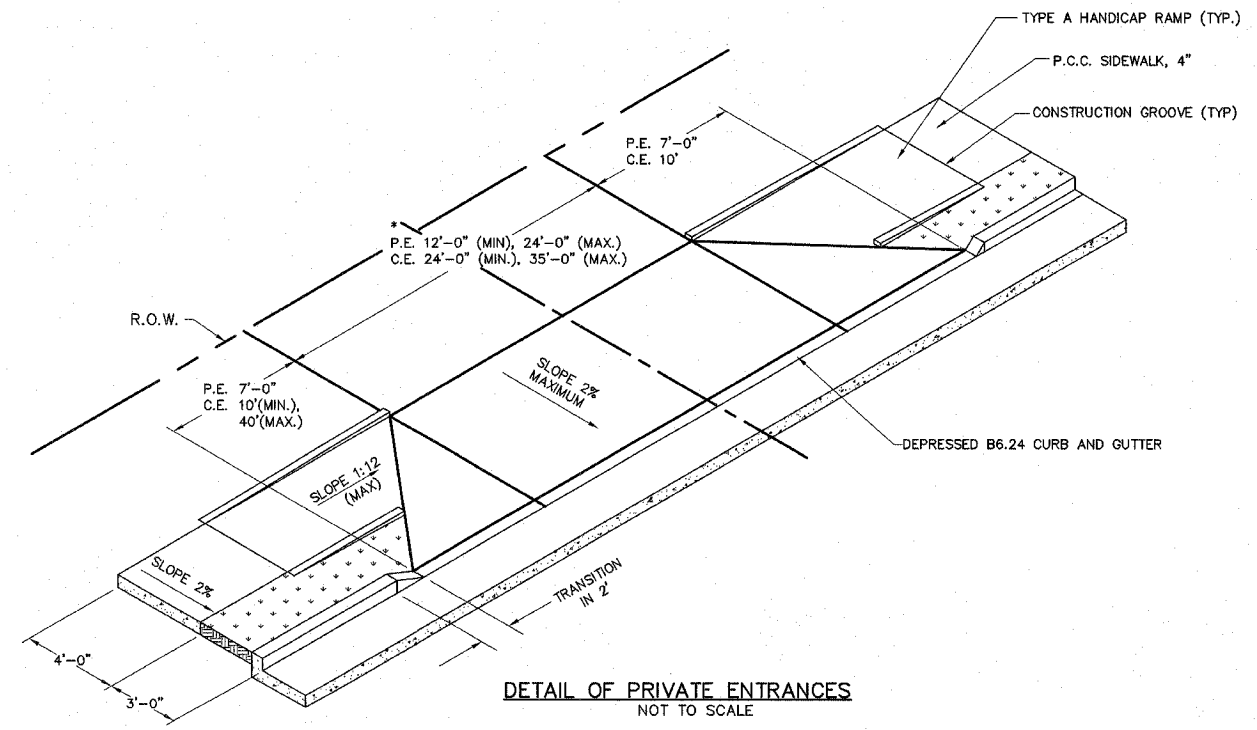


LEGEND

- COMBINATION CONCRETE CURB AND GUTTER, TYPE B6.24
- PROCESSING MODIFIED SOIL, 12"
- AGGREGATE BASE COURSE TYPE A, 4"
- P.C. CONCRETE PAVEMENT, 8.5"
- COMBINATION CONCRETE CURB AND GUTTER, TYPE B6.24 (IN TRANSITION TO MATCH EXISTING)

NOTE:
① TRANSITION TO MEET THE EXISTING CURB & GUTTER IN 10 FT (IF APPLICABLE). IF THE CURB AND GUTTER TRANSITION IS TO TAKE PLACE IN THE RADIUS, IT SHALL BE SO NOTED ON THE PLANS.

DETAIL OF SIDESTREET ENTRANCES ALONG WEST CORBIN STREET AT MILES DRIVE
NOT TO SCALE



DETAIL OF PRIVATE ENTRANCES
NOT TO SCALE

REVISIONS	
NAME	DATE

ILLINOIS DEPARTMENT OF TRANSPORTATION

DRIVEWAY AND ENTRANCE DETAILS
FAP ROUTE
SECTION 05-00016-02-RP
COUNTY MADISON
DRAWN BY: R.A.W.