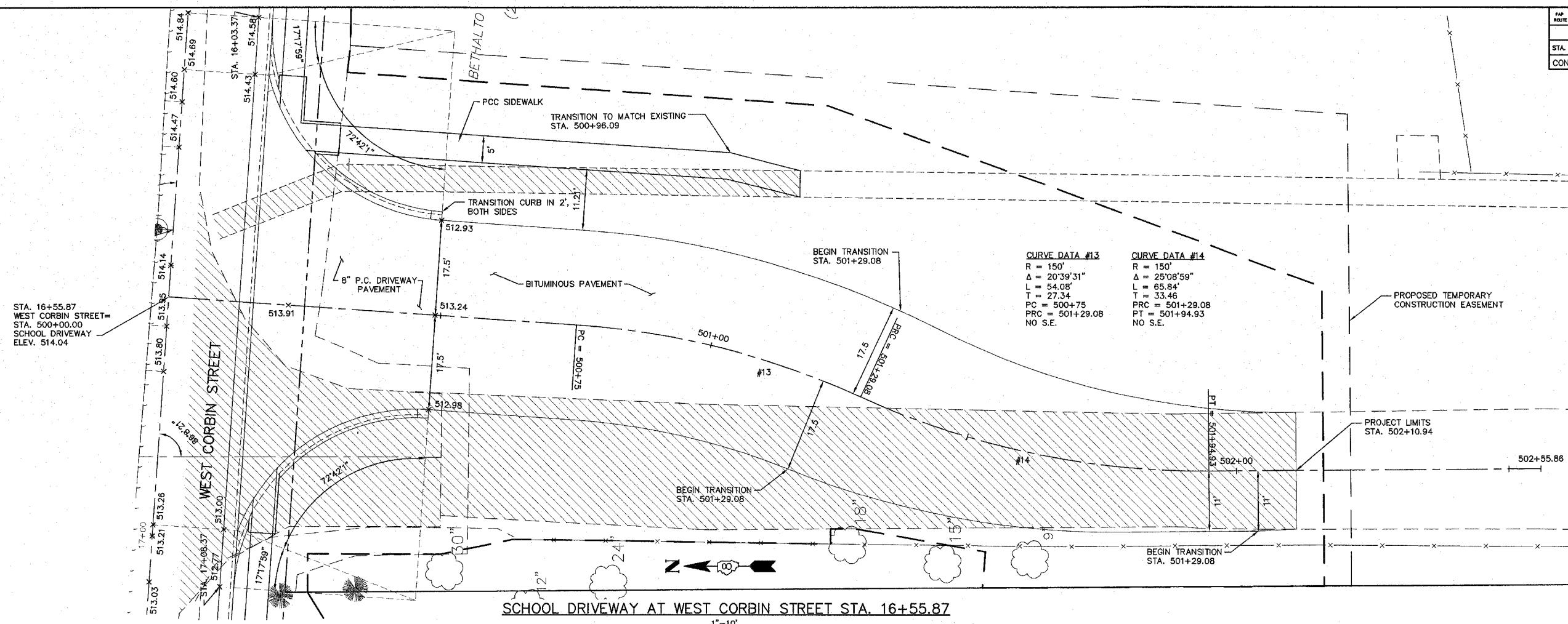


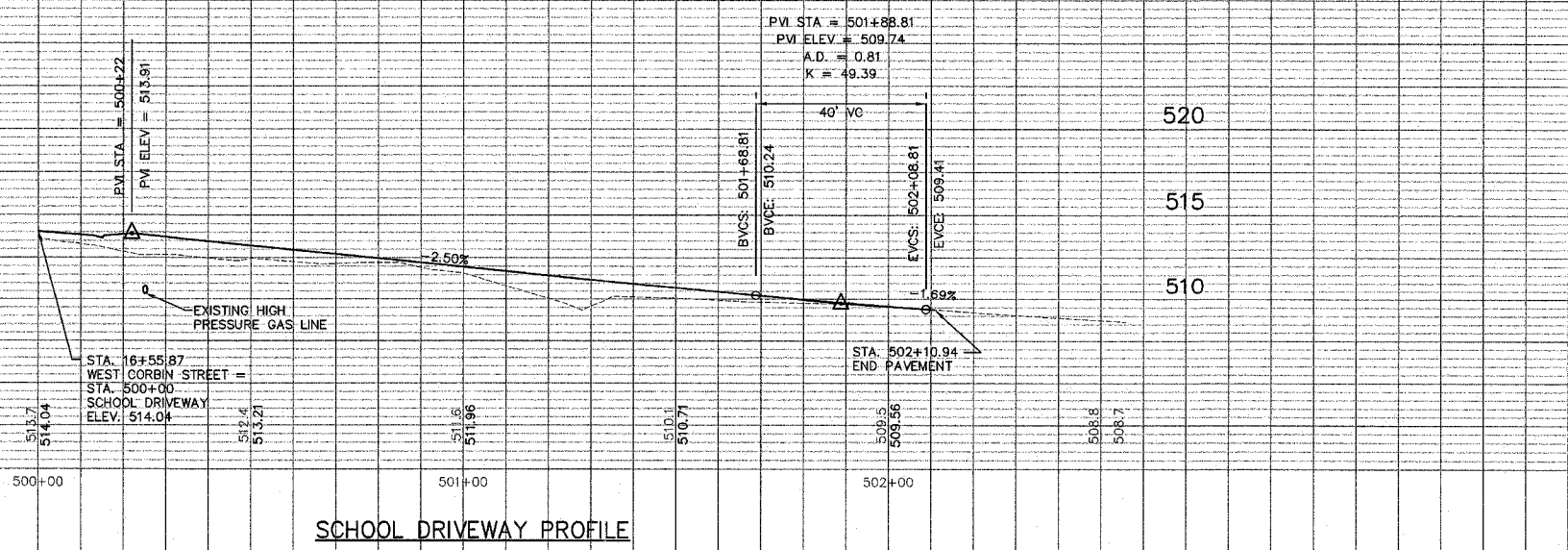
F&P NO.	SECTION	COUNTY	TOTAL SHEETS	SHEET NO.
05-00016-02-RP	MADISON	42	26	
STA. 500+00.00		TO STA. 502+10.94		
CONTRACT NO.: 97290				

PLAN	DATE	BY
DESIGNED	7/7/06	A.T.F.
CHECKED		
IN CHARGE		
DATE	7/7/06	
BY		
NO.		



PROFILE	DATE	BY
DESIGNED	7/7/06	A.T.F.
CHECKED		
IN CHARGE		
DATE	7/7/06	
BY		
NO.		

SCALE
HORIZ. 1"=20'
VERT. 1"=5'



NOTE:
 THE INFORMATION AND DATA SHOWN OR INDICATED ON THESE IMPROVEMENT PLANS WITH RESPECT TO EXISTING UNDERGROUND FACILITIES AND UTILITIES AT OR CONTIGUOUS TO THE SITE IS BASED ON INFORMATION AND DATA FURNISHED BY THE OWNERS OF SUCH UNDERGROUND FACILITIES AND UTILITIES OR BY OTHERS. NO GUARANTEE IS IMPLIED AS TO THE ACCURACY OR COMPLETENESS OF ANY SUCH INFORMATION OR DATA. THE CONTRACTOR SHALL HAVE FULL RESPONSIBILITY FOR (i) REVIEWING AND CHECKING ALL SUCH INFORMATION AND DATA; (ii) LOCATING ALL UNDERGROUND FACILITIES AND UTILITIES SHOWN OR INDICATED ON THE IMPROVEMENT PLANS; (iii) COORDINATION OF THE WORK WITH THE OWNERS OF SUCH UNDERGROUND FACILITIES AND UTILITIES DURING CONSTRUCTION, AND (iv) THE SAFETY AND PROTECTION OF ALL SUCH UNDERGROUND FACILITIES AND UTILITIES AND REPAIR ANY DAMAGE THERE TO RESULTING FROM THE WORK AT HIS EXPENSE.