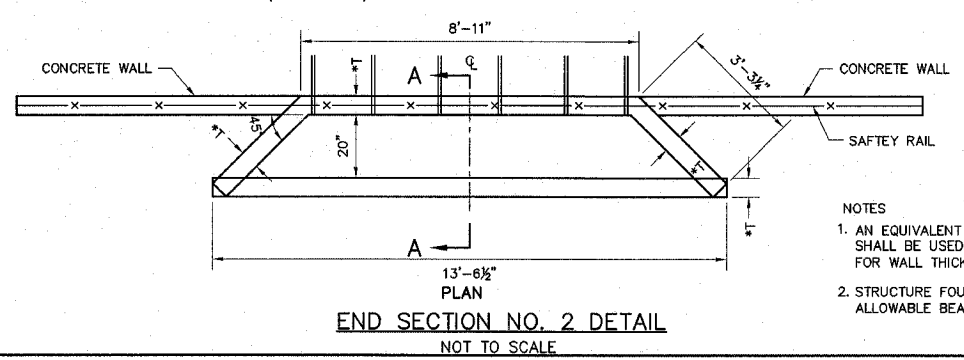
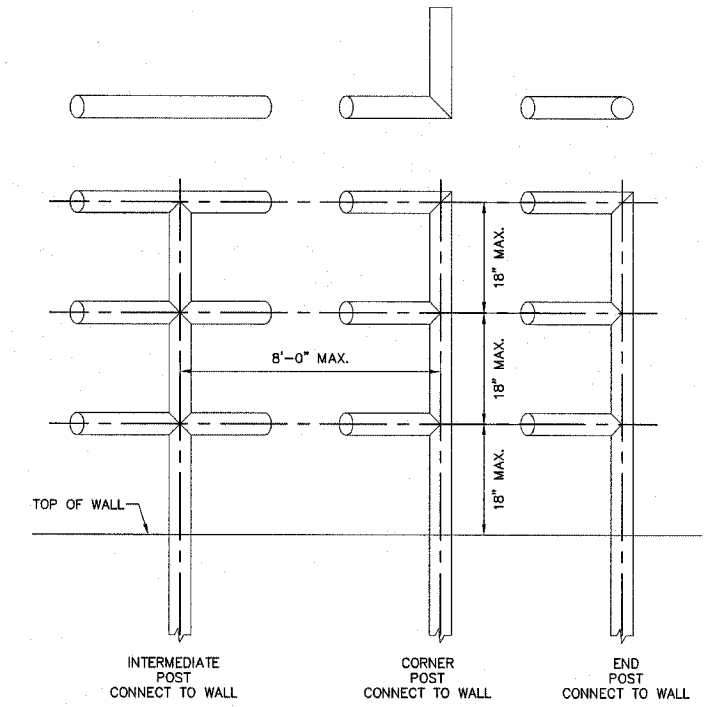
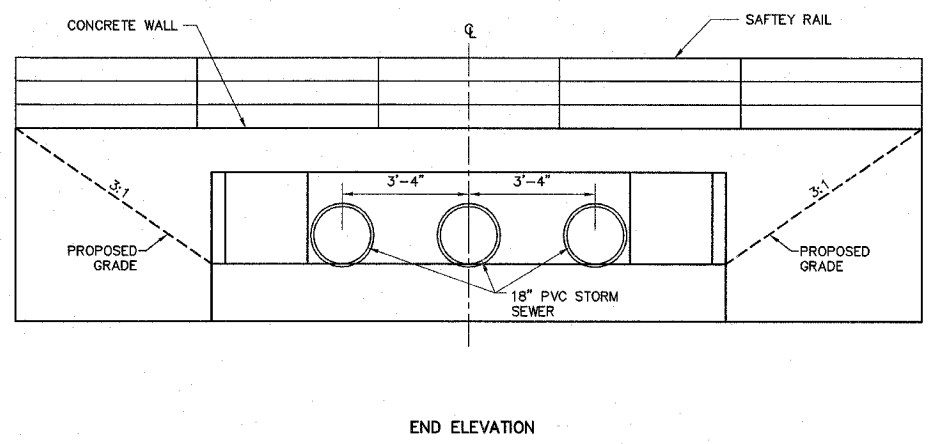
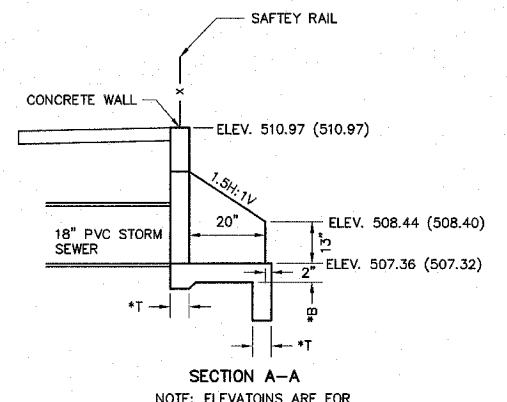


NOTES  
1. SEE IDOT STANDARD 606401 FOR REMAINING DETAILS AND CONSTRUCTION STANDARDS.



NOTES  
1. AN EQUIVALENT FLUID WEIGHT OF 50 POUNDS PER CUBIC FOOT (PCF) SHALL BE USED IN THE CALCULATION OF LATERAL EARTH PRESSURE FOR WALL THICKNESS. (T\*)  
2. STRUCTURE FOUNDATIONS SHOULD BE SIZED FOR MAXIMUM NET ALLOWABLE BEARING PRESSURE OF 1500 PSF. (B\*)

REVISIONS	
NAME	DATE

ILLINOIS DEPARTMENT OF TRANSPORTATION

**PAVED DITCH  
DETAILS**

FAP ROUTE  
SECTION 05-00016-02-RP  
COUNTY MADISON

DRAWN BY: R.A.W.