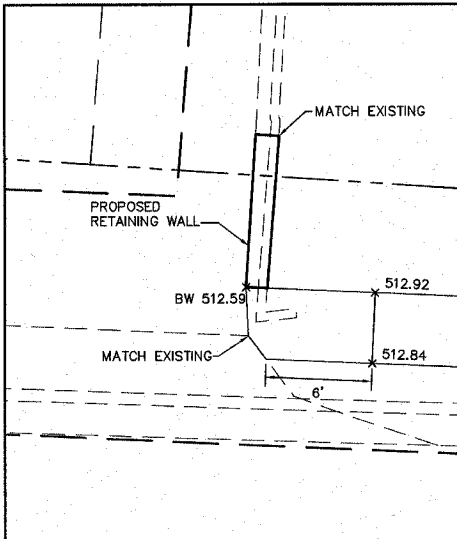
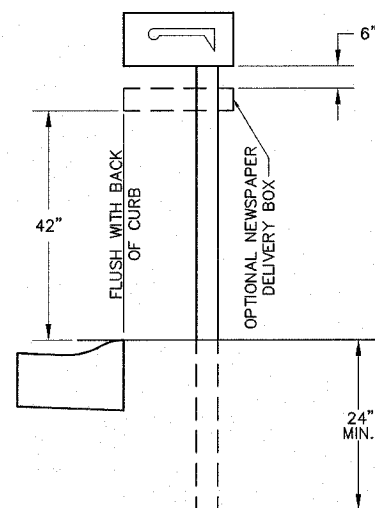


FAP ROUTE	SECTION	COUNTY	TOTAL SHEETS	SHEET NO.
	05-00016-02-RP	MADISON	42	29
STA. _____ TO STA. _____				
CONTRACT NO.: 97290				

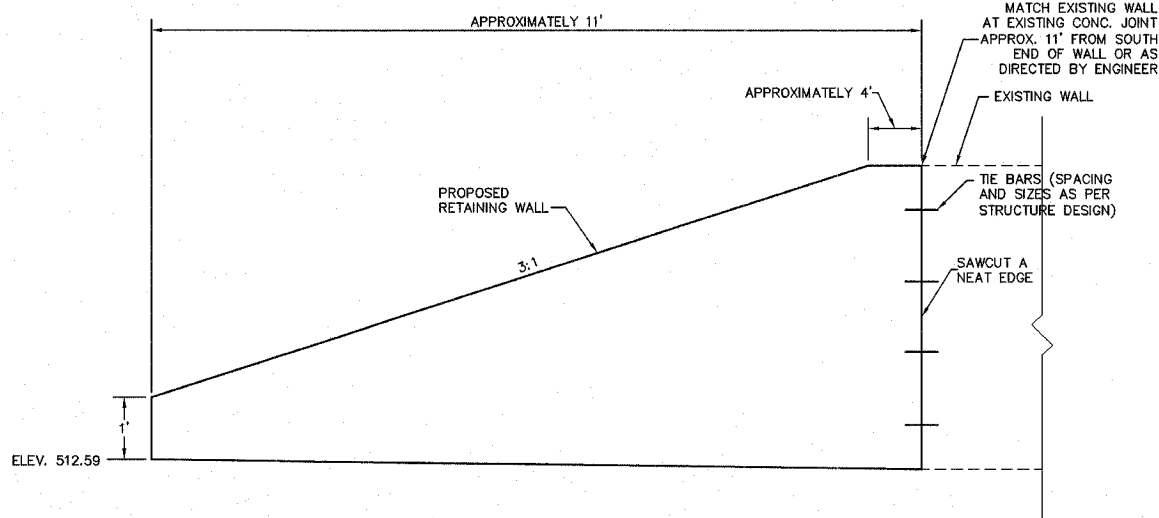


SIDEWALK TIE-IN
STA. 10+15.90
1"=5'

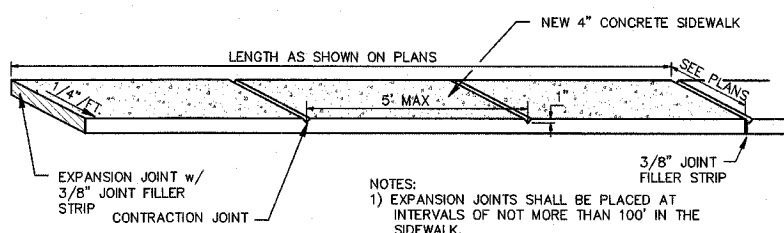


MAILBOX DETAIL
NOT TO SCALE

NOTE:
THE CONTRACTOR SHALL REMOVE ALL MAILBOXES WITHIN THE LIMITS OF CONSTRUCTION WHICH INTERFERE WITH CONSTRUCTION OPERATIONS AND SHALL ERECT THEM AT TEMPORARY LOCATIONS.
AS SOON AS CONSTRUCTION OPERATIONS PERMIT, THE CONTRACTOR SHALL SET THE MAILBOXES AT THEIR PERMANENT LOCATIONS. THIS WORK SHALL BE PERFORMED AS DIRECTED BY THE ENGINEER. THE CONTRACTOR SHALL REPLACE, AT THE CONTRACTOR'S EXPENSE, ANY MAILBOX OR POST WHICH HAS BEEN DAMAGED BY THE CONTRACTOR'S OPERATIONS.
THE COST OF ALL MATERIALS REQUIRED AND ALL LABOR NECESSARY TO COMPLY WITH THE ABOVE PROVISIONS SHALL NOT BE PAID FOR SEPARATELY, BUT SHALL BE CONSIDERED AS INCLUDED IN THE UNIT BID PRICES OF THE CONTRACT, AND NO ADDITIONAL COMPENSATION WILL BE ALLOWED.

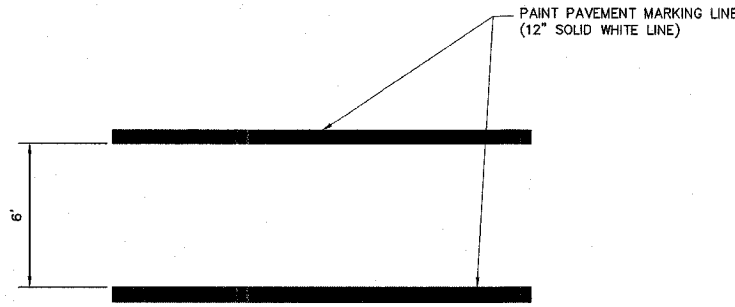


RETAINING WALL, SPECIAL
STA. 10+17.15 RT.
NOT TO SCALE



- NOTES:
1) EXPANSION JOINTS SHALL BE PLACED AT INTERVALS OF NOT MORE THAN 100' IN THE SIDEWALK.
2) EXPANSION MATERIAL TO BE EITHER RECESSED OR ROUTED OUT TO PROVIDE RESERVOIR FOR SEALER.
3) SEALER TO BE "SONOLASTIC" OR EQUAL, GRAY COLOR.

PC CONCRETE SIDEWALK DETAIL
NOT TO SCALE



CROSS-WALK DETAIL
NOT TO SCALE

REVISIONS	
NAME	DATE

ILLINOIS DEPARTMENT OF TRANSPORTATION
MISCELLANEOUS DETAILS
FAP ROUTE
SECTION 05-00016-02-RP
COUNTY MADISON
DRAWN BY: R.A.W.