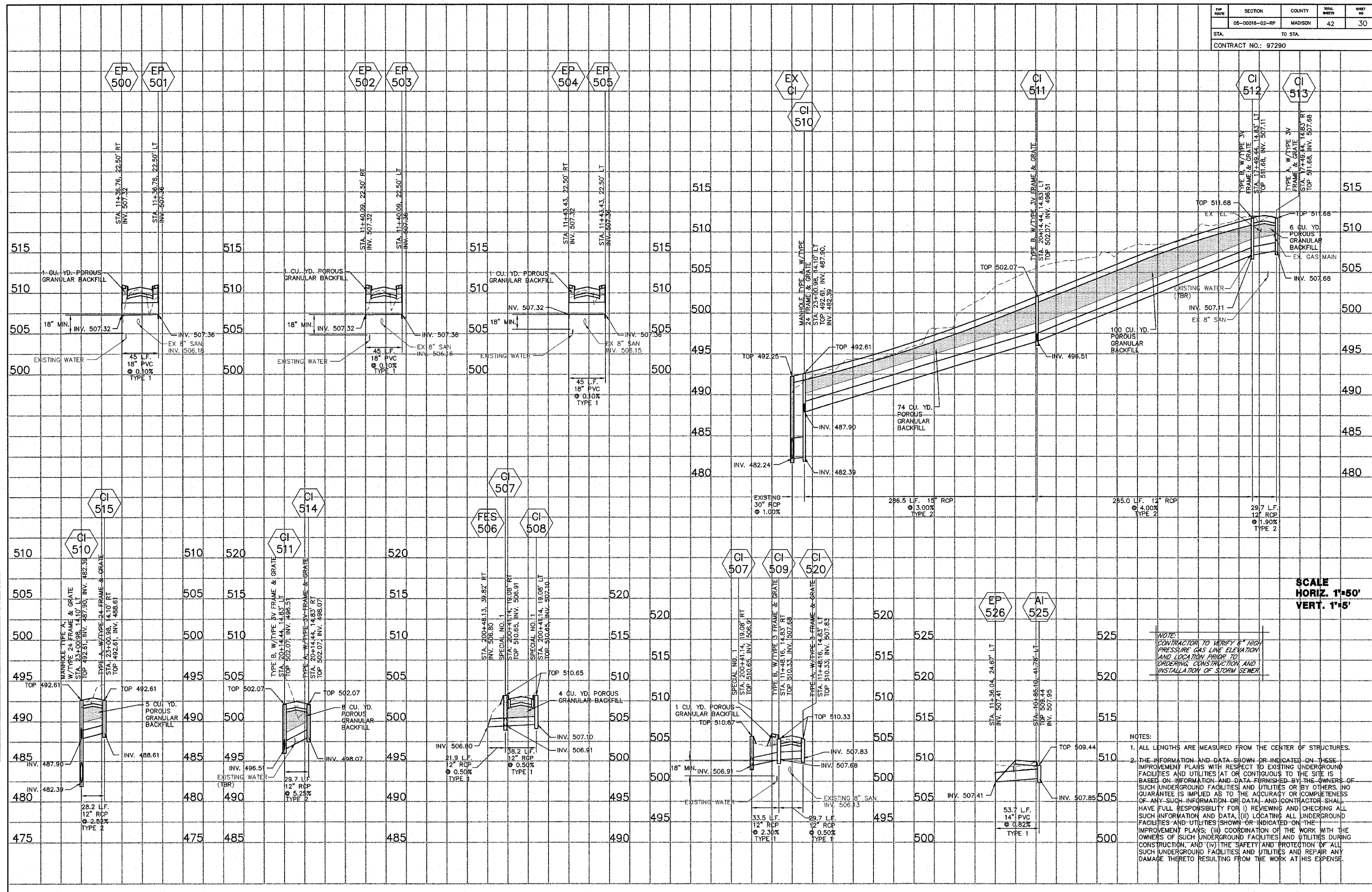


FAP SHEET	SECTION	COUNTY	TOTAL SHEETS	SHEET NO.
	05-00016-02-RP	MADISON	42	30
STA.	TO STA.			
CONTRACT NO.: 97290				



DATE	BY
12/27/26	J.P.F.
PROFILE DRAWN	BY
REVISIONS	NO.
NOTE BOOK	NO.
STRUCTURE IDENTIFYING CHRD	

SCALE
HORIZ. 1"=50'
VERT. 1"=5'

NOTE:
 CONTRACTOR TO VERIFY 6" HIGH PRESSURE GAS LINE ELEVATION AND LOCATION PRIOR TO ORDERING CONSTRUCTION AND INSTALLATION OF STORM SEWER

- NOTES:**
1. ALL LENGTHS ARE MEASURED FROM THE CENTER OF STRUCTURES.
 2. THE INFORMATION AND DATA SHOWN OR INDICATED ON THESE IMPROVEMENT PLANS WITH RESPECT TO EXISTING UNDERGROUND FACILITIES AND UTILITIES (AT OR CONTIGUOUS TO THE SITE) IS BASED ON INFORMATION AND DATA FURNISHED BY THE OWNERS OF SUCH UNDERGROUND FACILITIES AND UTILITIES OR BY OTHERS. NO GUARANTEE IS IMPLIED AS TO THE ACCURACY OR COMPLETENESS OF ANY SUCH INFORMATION OR DATA, AND CONTRACTOR SHALL HAVE FULL RESPONSIBILITY FOR (i) REVIEWING AND CHECKING ALL SUCH INFORMATION AND DATA, (ii) LOCATING ALL UNDERGROUND FACILITIES AND UTILITIES SHOWN OR INDICATED ON THE IMPROVEMENT PLANS; (iii) COORDINATION OF THE WORK WITH THE OWNERS OF SUCH UNDERGROUND FACILITIES AND UTILITIES DURING CONSTRUCTION; AND (iv) THE SAFETY AND PROTECTION OF ALL SUCH UNDERGROUND FACILITIES AND UTILITIES AND REPAIR ANY DAMAGE THERETO RESULTING FROM THE WORK AT HIS EXPENSE.