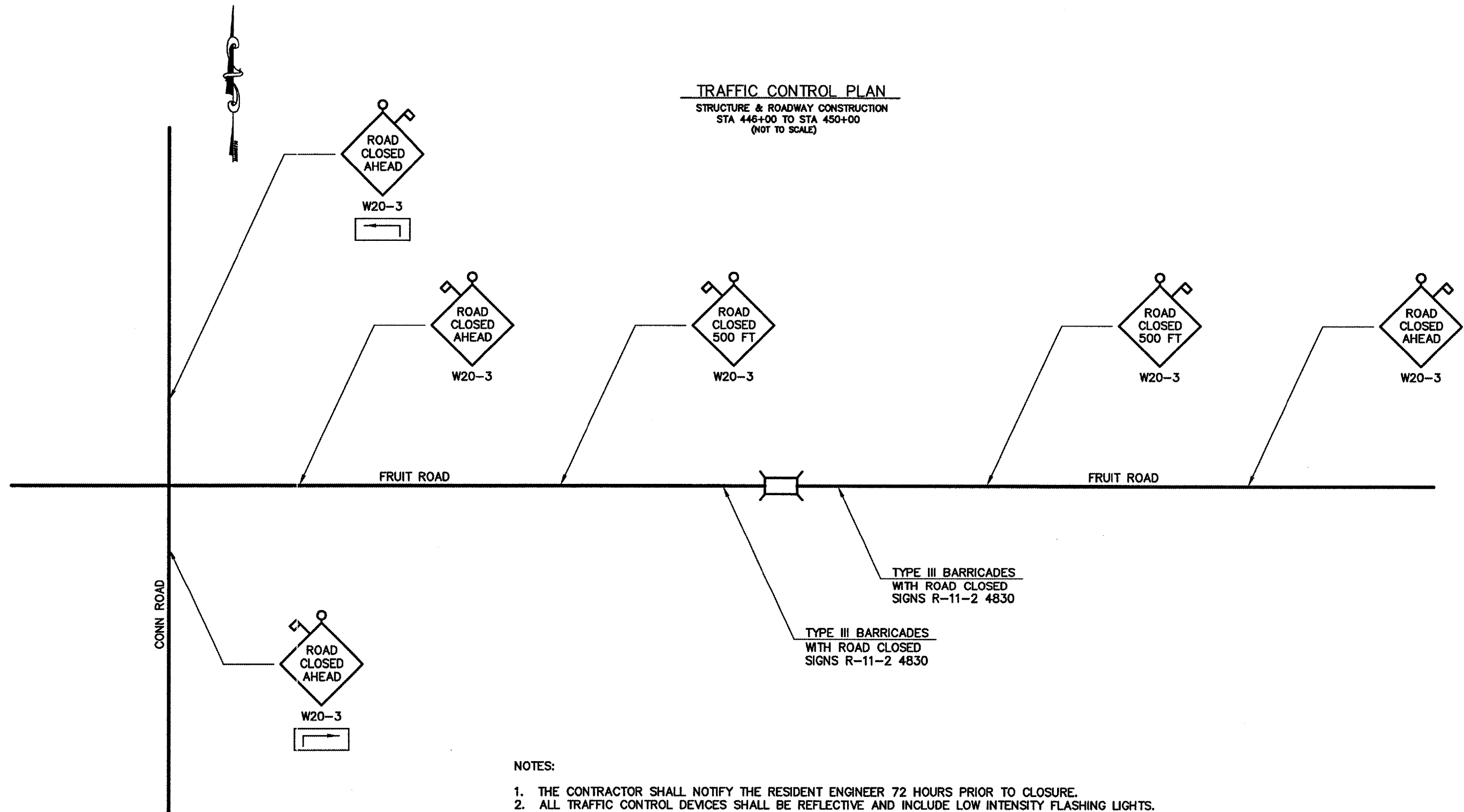


RTE. NO.	SECTION	COUNTY	TOTAL SHEETS	SHEET NO.
FAS 766	04-00176-00-BR	MADISON	26	6

**CONTRACT NO. 97296**

**TRAFFIC CONTROL PLAN**

STRUCTURE & ROADWAY CONSTRUCTION  
STA 446+00 TO STA 450+00  
(NOT TO SCALE)



**NOTES:**

1. THE CONTRACTOR SHALL NOTIFY THE RESIDENT ENGINEER 72 HOURS PRIOR TO CLOSURE.
2. ALL TRAFFIC CONTROL DEVICES SHALL BE REFLECTIVE AND INCLUDE LOW INTENSITY FLASHING LIGHTS.
3. LOCATION OF TRAFFIC CONTROL DEVICES SHALL BE APPROVED BY THE ENGINEER PRIOR TO PLACEMENT.
4. THE CONTRACTOR SHALL MAINTAIN TEMPORARY ACCESS TO DRIVEWAYS AFFECTED BY CONSTRUCTION.
5. FOR STABILIZATION, ALL TYPE III BARRICADES SHALL REQUIRE A MINIMUM OF FOUR SAND BAGS PER BARRICADE.
6. TRAFFIC CONTROL SHALL CONFORM TO IDOT HIGHWAY STANDARDS: 702001-06, B.L.R. 21-6