

F.A. RTE.	SECTION	COUNTY	TOTAL SHEETS	SHEET NO.
*	**	WILLIAMSON	917	117
STA.		TO STA.		
FED. ROAD DIST. NO.		ILLINOIS FED. AID PROJECT		

\* I-57, & OLD IL 13 (FAU 9629)  
 \*\* (X1-6-2)VB-2,(X1-6)HBK-2

NOTES:

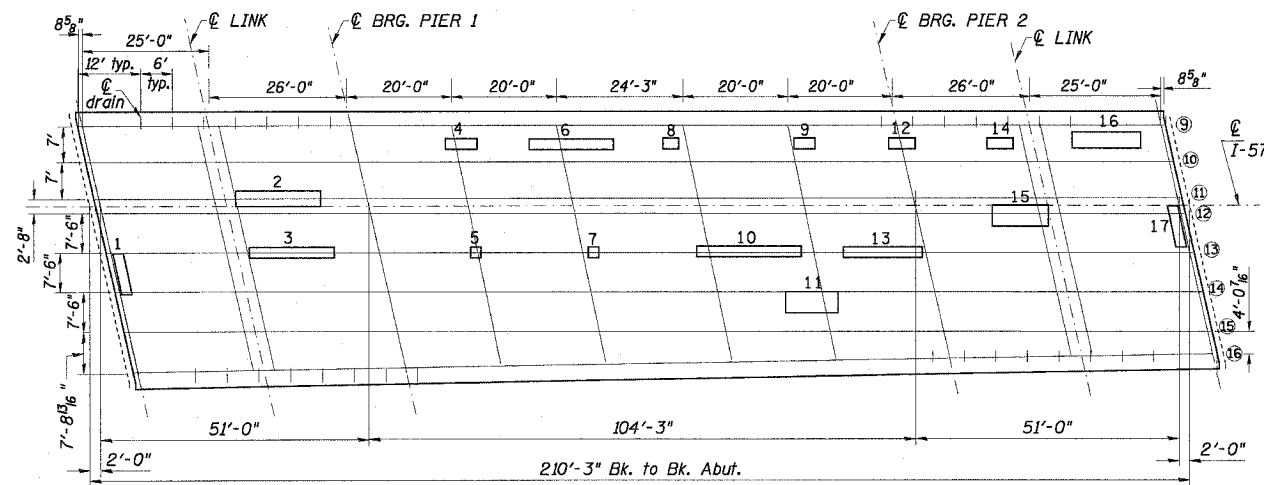
DECK PATCHING SURVEY WAS PERFORMED IN MARCH, 2007.

QUANTITIES SHOWN IN THE PLANS FOR PATCHING ARE ESTIMATES. THE RESIDENT ENGINEER WILL DETERMINE FINAL PATCH LOCATIONS AND QUANTITIES IN THE FIELD BEFORE BRIDGE DECK PATCHING OPERATIONS BEGIN.

THE RESIDENT ENGINEER WILL MARK THE PLAN VIEW FOR THE DECK REPAIRS TO BE INCORPORATED IN THE AS BUILT PLANS.

EXISTING PROTECTIVE SHIELD SHALL BE REMOVED BY THE CONTRACTOR. THE MATERIAL SHALL BECOME THE PROPERTY OF THE CONTRACTOR. THIS WORK SHALL BE INCLUDED IN THE COST FOR PROTECTIVE SHIELD (PERMANENT).

THE PROTECTIVE SHIELD (PERMANENT) SHALL BE INSTALLED PRIOR TO THE START OF BRIDGE DECK PATCHING.



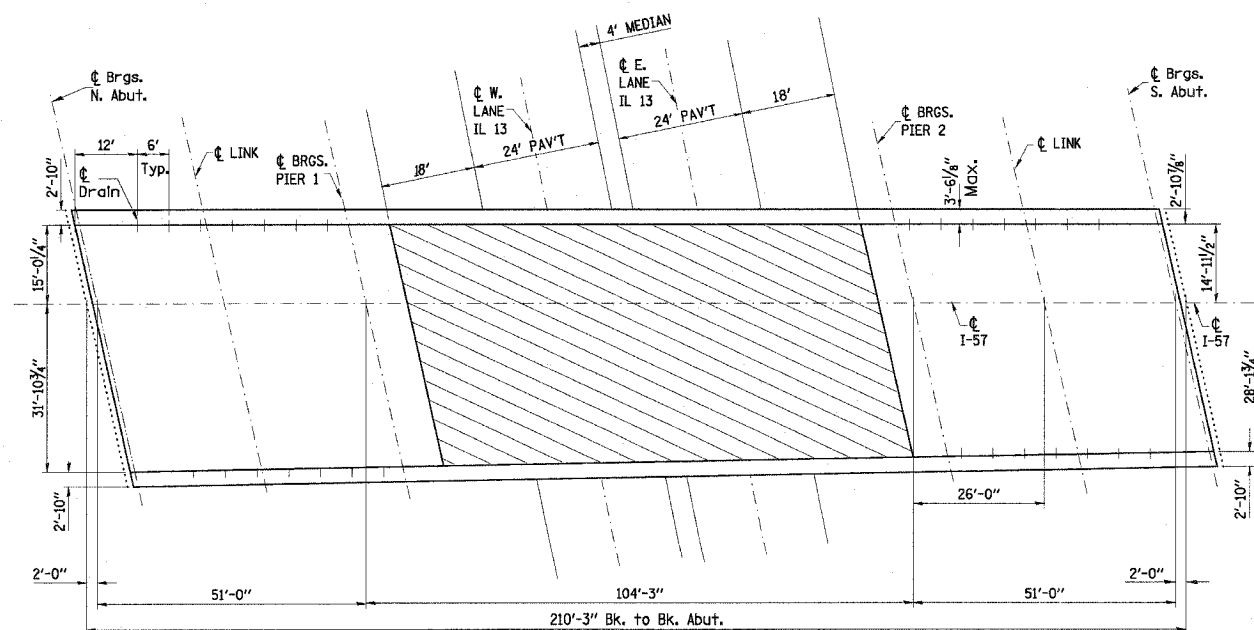
SOUTHBOUND BRIDGE  
100-0009

DECK SLAB REPAIR (FULL DEPTH)

NUMBER	LENGTH (FT.)	WIDTH (FT.)	TYPE	
			TYPE I	TYPE II
1	8	2		1.8
2	10	3		3.3
3	10	2		2.2
4	6	2		1.3
5	2	2	0.4	
6	16	2		3.6
7	2	2	0.4	
8	3	2		0.7
9	4	2		0.9
10	20	2		4.4
11	10	4		4.4
12	5	2		1.1
13	15	2		3.3
14	5	2		1.1
15	16	4		7.1
16	13	3		4.3
17	12	2		2.7

BILL OF MATERIALS

ITEM	UNIT	TOTAL
DECK SLAB REPAIR (FULL DEPTH, TYPE I)	SQ. YD.	1
DECK SLAB REPAIR (FULL DEPTH, TYPE II)	SQ. YD.	43
PROTECTIVE SHIELD (PERMANENT)	SQ. YD.	441
DECK SLAB REPAIR (PARTIAL)	SQ. YD.	250



100-0009  
DECK REPAIR

PROTECTIVE SHIELD (PERMANENT)

REVISIONS	
NAME	DATE

ILLINOIS DEPARTMENT OF TRANSPORTATION  
**PRE-STAGE 1 AND PRE-STAGE 2**  
**I-57**  
**SOUTHBOUND BRIDGE**  
**100-0009**

SCALE: VERT. NONE  
 HORIZ. DATE

DRAWN BY CNH  
 CHECKED BY